

# LEDko EXT Engine T/D +

coemar  
Light Engine  
made in Italy

REFLECTION  
**LEDko**™ EXT

menu enter

Product code:  
F125E001A (T CRI 80)  
F125C001A (T CRI 90)  
F125F001A (D CRI 80)  
F125D001A (D CRI 90)

Last update:  
19/02/2025



LEDko EXT Engine + with Lens Tube (not included)

#### Introducing

● Designed with new electronic and a new OLED display, this spot profile projector is the evolution of the Tungsten and Daylight.

The HD + electronic with advanced LED controller enables a smooth dimming and it offers and higher luminous efficiency.

#### Key Features



● Tungsten or Daylight COB LED



● CRI > 80 or > 90



● CTT 3.200 K or 5.600 K



● IP 65



● LED profile spot  
● High lumen flux and flat field



● Swappable lens tubes between 5° - 90°



● Die-cast aluminium (Anti-Salt treatment)



● Custom color on request (optional)



● European Conformity certification

## General

● LED Source	Tungsten or Daylight COB LED
● CCT Range	● ● ● ● ● ● 3.200 K or 5.600 K
● Color Rendition Average	CRI> 80 or >90
● Dimming	8 or 16 bit, 5 selectable curves: Exponential, Logarithmic, Linear, Halo and Standard
● Dimming Smooth Selection	Fast, Slow and Very Slow
● Strobe	Electronic strobe, synchronized, random, pulse effect
● Available Optics	Swappable lens tubes between 5° - 90°
● Camera flicker control/Hz range	Yes, from 600 Hz to 20.000 Hz
● Calibrated Cob	Yes
● L80 Rating (hours to 80% output)	50.000 Hours
● Pattern projection	Yes
● Pattern size	A or B

## Electrical

● Voltage Input	90-230 V 50/60 Hz, auto-sensing
● Power Consumption	200 W - 0.92 A at 230 V, 1.83 A at 115 V - cosφ 0.95
● Power Connection	Internal cable without power plug
● Data Connection	In/Out IP65 DMX Signal Junction Connector (Cod Art. RCN 73)

## Thermal

● Ambient Operating Temperature	-40° - +40°C (-40° - + 104° F)
● Active Electronic Thermal	Active electronic thermal management
● Fan (controllable)	Yes, 4 different settings: Silent, Studio, Auto, DMX regulated

## Control

● Protocols	DMX-512, RDM (Remote Device Management), Wireless (optional by LumenRadio)
● RDM configuration	Yes
● DMX Channels	5 / 1
● Display	Graphic OLED
● Interface	Setting, addressing, testing and measurements via display

## Physical

● Mounting Options	Yoke
● Materials	Die-cast aluminium (Anti-Salt treatment)
● Framing System	Four blade framing system, each shutter blade is adjustable for radial position and angle
● Weight	Body: 9.5 Kg / 20.94 lbs - With front barrel: 11 Kg / 24.25 lbs - With lens tube: 13 Kg / 28.66 lbs - With Zoom Profile 15°/35°: 15.5 Kg / 34.17 lbs - With Zoom Profile 25°/50°: 15 Kg / 33.07 lbs
● Length	379.2 mm / 14.92 in
● Height	187 mm / 7.36 in - With bracket: 518.5 mm / 20.41 in
● Width	236 mm / 9.29 in
● IP Rating	IP65
● Color options	Black (standard), custom color on request (optional)

Optics

BC10011A017	Profile Zoom 15°-35°
BC10011A019	Profile Zoom 25°-50°
BC10011A003	Profile Zoom 28°-40°
BC10011A002	Soft Profile Fresnel Zoom 14°-40°
BC10011A001	Soft Profile PC Zoom 11°-38°
BC10011A000	Front Barrel with Burnished Blades
BC10011A042	Lens Tube Profile 10°
BC10011A023	Lens Tube Profile 14°
BC10011A012	Lens Tube Profile 19°
BC10011A013	Lens Tube Profile 26°
BC10011A015	Lens Tube Profile 36°
BC10011A016	Lens Tube Profile 50°
BC10011A024	Lens Tube Profile 70°

General accessories

BC10034A003	4-Leaf Barndoor
BC10011A106	Metal Gobo Holder
BC10011A006	Magnetic Gobo Holder
BC10011A030	Gobo Holder for Glass Gobo
BC10011A010	Iris
BC10011A049	Gobo Holder for Iris Slot
BC10011A047	Hook Clamp, 48-51 mm (Max Load 20 Kg)
BC10011A045	Light Clamp Silver, 48-51 mm (Max 75 Kg)
BC10011A046	Light Clamp Black, 48-51 mm (Max 75 Kg)
BC10011A043	Clamp Silver Flat 13-30 mm/ø15-50 mm (Max 20 Kg)
BC10011A044	Clamp Black Flat 13-30 mm/ø15-50 mm (Max 20 Kg)
BC10029A100	LEDko EXT wireless kit
BC10011A150	Pole Operated Yoke

Accessories for Profile Zoom 15°-35° and 25°-50°

BC10011A028	Donut (190.5 mm)
BC10011A027	Half Top Hat (190.5 mm)
BC10011A029	Top Hat (190.5 mm)
BC10011A040	Color Frame Holder (190.5 mm)

Accessories for Soft Profile Zoom (Fresnel, PC) and Profile Zoom 28°-40°

BC10011A036	Donut (185 mm)
BC10011A035	Half Top Hat (185 mm)
BC10011A037	Top Hat (185 mm)
ACO4204	Color Frame Holder (185 mm)

Accessories for Lens Tube

BC10011A032	Donut (159 mm)
BC10011A031	Half Top Hat (159 mm)
BC10011A033	Top Hat (159 mm)
BC10011A021	Color Frame Holder (159 mm)

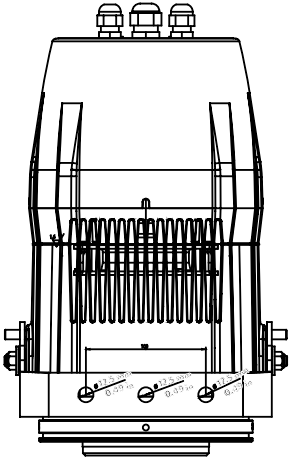
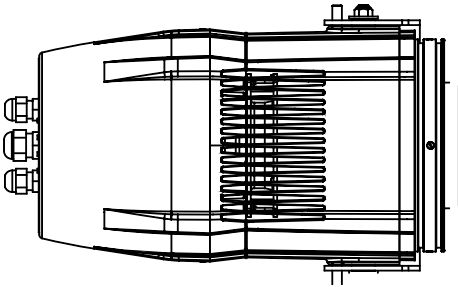
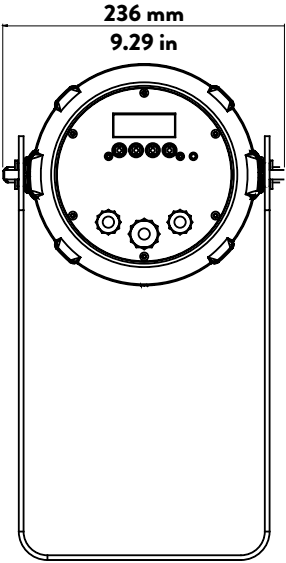
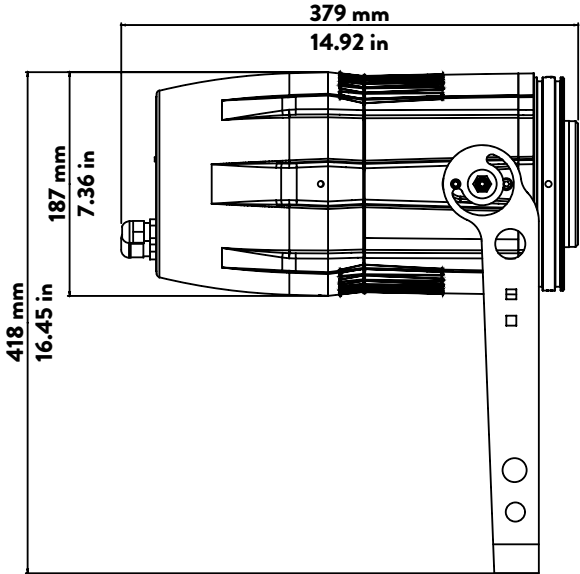
**5 Channels**

- 01 → Master Dimmer
- 02 → Spare Channel
- 03 → Dimmer Fine
- 04 → Strobe Effect
- 05 → Special Functions

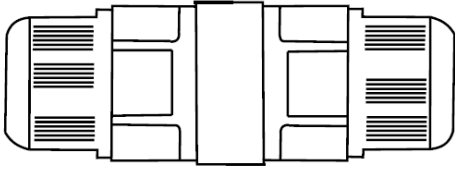
**1 Channels**

- 01 → Master Dimmer - Color  
Temperature Settable by Display

Drawing Size



DMX Signal Junction Connector



Specification

DMX 512 STANDARD:

Pin 1 = Ground Wire

Pin 2 = Negative (Black)

Pin 3 = Positive (White)

● Coemar Lighting S.r.l.

Via Carpenedolo, 90  
46043, Castiglione delle Stiviere (MN) – Italy

P. +39 0376 1514412  
M1. info@coemar.com  
M2. service@coemar.com  
W. coemar.com

P.iva – C.f. 02415330204

