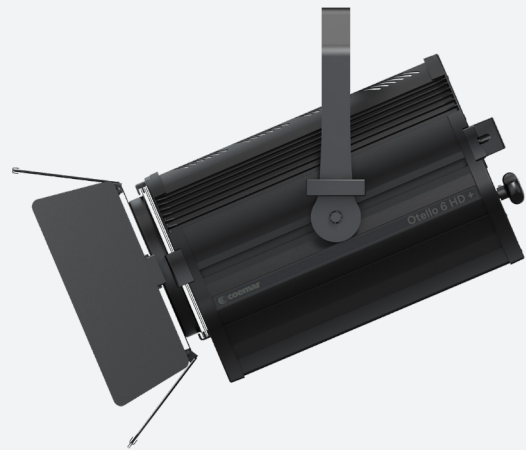


Otello 6 HD FullSpectrum +

Last update:
14/10/2024



Otello 6 HD + with 8 leaf barndoor

Introducing

● Developed to offer the best solution in the stage lighting field focussing on **theatre and TV studios applications**, Otello Led Fresnel incorporates all traditional characteristics of a Fresnel light such as the **distinctive soft-edged** and **very wide beam** and the **smooth and homogeneous light field**.

The improved **HD electronic** with an advanced LED controller guarantees a smooth 20 bit dimming and a superlative **color mixing**.

Next to the traditional manual or P.O. option, Otello offers an optional motorized zoom, which together with a modern design and Oled display with on-board selector for quick setting represents the state of the art in terms of LED Fresnel range.

The family consists of 2 fixtures with lenses of 150 mm (5,9 inch) and 200 mm (7,87 inch). All variants include COB, VariWhite, Studio and FullSpectrum 6 LEDs in 3 power steps.

● **FullSpectrum** : 2.700 – 20.000 K (CRI average > 95); Red, Green, Blue, Cyan, Lime, Amber color mixing with Green-Magenta adjustment

● **VariWhite | Tungsten | Daylight**: white engines with the Tungsten and Daylight COB LED calibrated respectively at 3.000 K and 5.600 K CCT and a tunable white source ranging from 2.800 to 6.500 K (CRI > 94) for the VariWhite version

Key Features



- Red, Green, Blue, Cyan, Lime, Amber light source, 20 bit color mixing
- Green-Magenta adjustment
- Color mixing with hue and saturation control



- High CRI 97 @ 3.200 K, CRI 96 @ 5.600 K



- CCT 2.700K → 20.000 K



- Fresnel lens (diameter: 150 mm / 5.9 in)
- Zoom range from 9° to 46° half peak angle
- Available with Manual or Motorized Zoom



- Extruded aluminum, flame-retardant technopolymer reinforced with fiberglass



- Custom color on request (optional)



- Manual (standard) or Pole Operated Pan-Tilt (optional)

General	
● LED Source	RGBCLA COB LED (Red, Green, Blue, Cyan, Lime, Amber) - Color mixing with hue and saturation control
● CCT Range	● ● ● ● CCT from 2.700 K to 10.000 K (through DMX) or up to 20.000 K (through Display)
● Color Rendition Average	CRI 97 @ 3.200 K, CRI 96 @ 5.600 K
● Dimming	8 or 16 bit, 5 selectable curves: Exponential, Logarithmic, Linear, Halo and Standard
● Dimming Smooth Selection	Fast, Slow and Very Slow
● Strobe	Electronic strobe, synchronized, random, pulse effect
● Lens	Glass Fresnel lens (diameter: 150 mm / 5.9 in)
● Optical	Zoom range from 9° to 46° half peak angle (motorized, manual or PO zoom available)
● Green-Magenta adjustment	Continuously adjustable (Full Minusgreen to Full Plusgreen)
● Color saturation function	Generated colors fades to White tone selected with the CCT channel
● Dim to Warm function	Halogen lamp dimmer simulation
● Camera flicker control/Hz range	Yes: 20.000 Hz
● Calibrated Cob	Yes
● L80 Rating (hours to 80% output)	50.000 Hours
Electrical	
● Voltage Input	80-264V, 50-60 Hz, Auto-sensing
● Power Consumption	190 W Maximum - 0.84 A at 230V, 1.68 A at 115V - $\cos\phi$: 0.98 (manual / P.O. zoom) 200 W Maximum - 0.88 A at 230V, 1.77 A at 115V - $\cos\phi$: 0.98 (motorized zoom)
● Power Connection	In and Out PowerCON TRUE1 Top connectors to feed up to 8 (at 230V) or 4 (at 115V) fixtures
● Data Connection	In and Out DMX 5 pin locking XLR connectors
Thermal	
● Ambient Operating Temperature	0°C - +40°C (32°F - 104°F)
● Fan (controllable)	Yes, 4 different settings: Silent, Studio, Auto, DMX Regulated
Control Options	
● Protocols	DMX512A, RDM (Remote Device Management), Wireless (Optional By LumenRadio)
● RDM configuration	Yes
● DMX Channels	Manual / PO zoom version: 16 / 7 / 1 / Studio mode / RGB mode / fine RGB mode / Sunrise mode Motorized zoom version: 17 / 8 / Studio mode / RGB mode / fine RGB mode / Sunrise mode
● Display	Graphic OLED with on-board selector for quick setting
● Firmware upgrade	Through DMX with RDM Upgrade USB interface (code AC10011A001)
Physical	
● Yoke	Manual (standard) or Pole Operated Pan-Tilt (optional)
● Materials	Extruded aluminum, flame-retardant technopolymer reinforced with fiberglass
● Weight	With Manual Yoke: 9.5 Kg / 20.94 lbs - With Pole Operated Yoke: 11 Kg / 24.25 lbs
● Length	425.6 mm / 16.76 in
● Width	With Manual Yoke: 277.7 mm / 10.93 in - With Pole Operated Yoke: 370 mm / 14.56 in
● Height without yoke	267.3 mm / 10.52 in
● Height with yoke	With Manual Yoke: 384.2 mm / 15.13 in - With Pole Operated Yoke: 558 mm / 21.96 in
● IP Rating	IP20
● Color options	Black (standard), custom color on request (optional)
Included accessories	
BC10044A001	8-Leaf Barndoor
GKIT17 (USA) / GKIT16 (EU)	1.5 m power cable with PowerCON TRUE1 Top and bare ends
BC10044A005	Color frame holder



Otello 6 HD + (manual zoom)
Rear Panel with the new OLED display



Otello 6 HD + with
Pole Operated Yoke and Pole Operated Zoom

Otello 6 HD+ PO version / Rear Panel

DMX Charts - Manual version

16 Channels

- 01 → Master Dimmer
- 02 → Red
- 03 → Green
- 04 → Blue
- 05 → Cyan
- 06 → Lime
- 07 → Amber
- 08 → Strobe Effect
- 09 → Dimmer Fine
- 10 → Special Functions
- 11 → Red Tone
- 12 → Green Tone
- 13 → Blue Tone
- 14 → White Tone
- 15 → Green Saturation
- 16 → Saturation

7 Channels

- 01 → Master Dimmer
- 02 → Red
- 03 → Green
- 04 → Blue
- 05 → Cyan
- 06 → Lime
- 07 → Amber

Studio Mode

- 01 → Master Dimmer
- 02 → White Tone
- 03 → Green Saturation
- 04 → Saturation
- 05 → Hue
- 06 → Dimmer Fine
- 07 → Special Functions

1 Channel

- 01 → Master Dimmer - Color Temperature Settable by Display

RGB Mode

- 01 → Master Dimmer
- 02 → Dimmer Fine
- 03 → Red
- 04 → Green
- 05 → Blue
- 06 → White Tone
- 07 → Saturation
- 08 → Strobe Effect
- 09 → Special Functions

Fine RGB Mode

- 01 → Master Dimmer
- 02 → Dimmer Fine
- 03 → Red
- 04 → Red Fine
- 05 → Green
- 06 → Green Fine
- 07 → Blue
- 08 → Blue Fine
- 09 → White Tone
- 10 → Saturation
- 11 → Strobe
- 12 → Special Functions

Sunrise Mode

- 01 → Master Dimmer
- 02 → Dimmer Fine
- 03 → Proportional CCT
- 04 → Step CCT
- 05 → Green Saturation
- 06 → Special Functions

17 Channels

- 01 → Master Dimmer
- 02 → Red
- 03 → Green
- 04 → Blue
- 05 → Cyan
- 06 → Lime
- 07 → Amber
- 08 → Strobe Effect
- 09 → Dimmer Fine
- 10 → Special Functions
- 11 → Red Tone
- 12 → Green Tone
- 13 → Blue Tone
- 14 → White Tone
- 15 → Green Saturation
- 16 → Saturation
- 17 → Zoom

8 Channels

- 01 → Master Dimmer
- 02 → Red
- 03 → Green
- 04 → Blue
- 05 → Cyan
- 06 → Lime
- 07 → Amber
- 08 → Zoom

Studio Mode

- 01 → Master Dimmer
- 02 → White Tone
- 03 → Green Saturation
- 04 → Saturation
- 05 → Hue
- 06 → Dimmer Fine
- 07 → Special Functions
- 08 → Zoom

RGB Mode

- 01 → Master Dimmer
- 02 → Dimmer Fine
- 03 → Red
- 04 → Green
- 05 → Blue
- 06 → White Tone
- 07 → Saturation
- 08 → Strobe Effect
- 09 → Special Functions
- 10 → Zoom

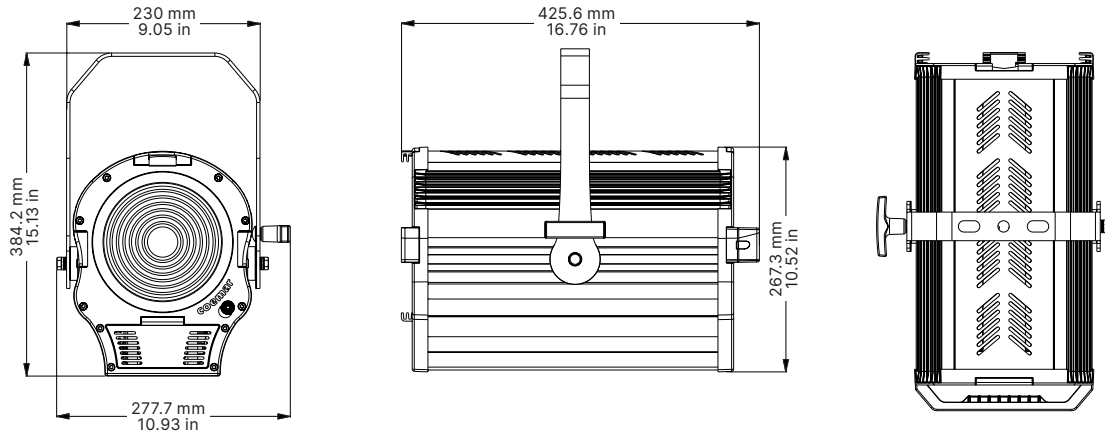
Fine RGB Mode

- 01 → Master Dimmer
- 02 → Dimmer Fine
- 03 → Red
- 04 → Red Fine
- 05 → Green
- 06 → Green Fine
- 07 → Blue
- 08 → Blue Fine
- 09 → White Tone
- 10 → Saturation
- 11 → Strobe
- 12 → Special Functions
- 13 → Zoom

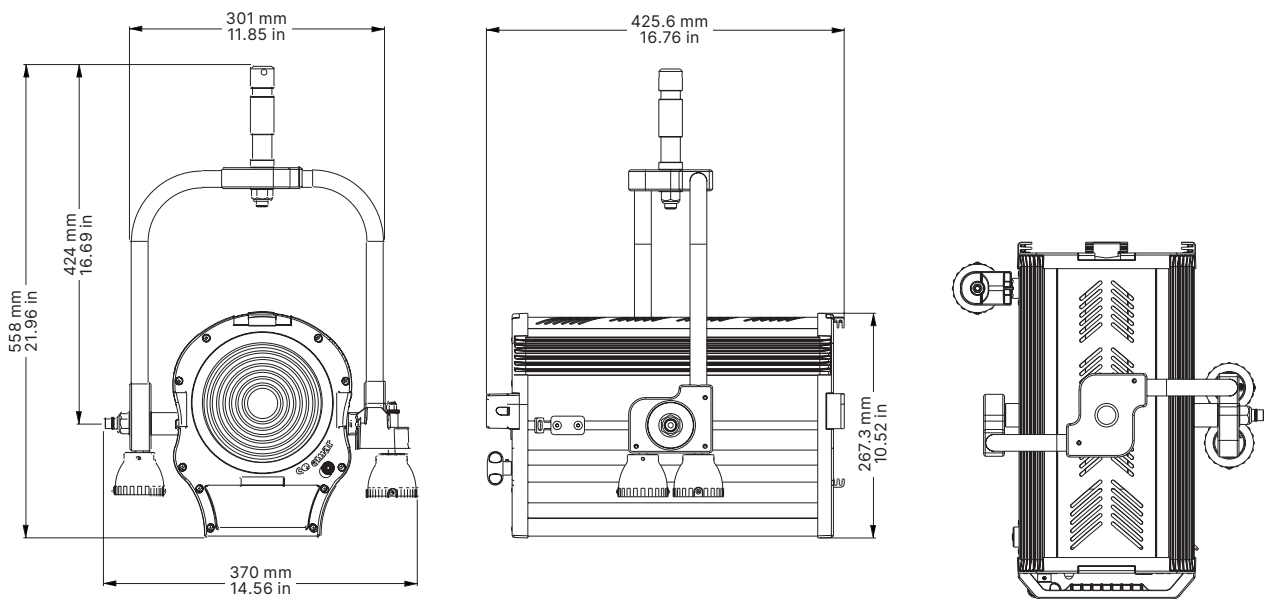
Sunrise Mode

- 01 → Master Dimmer
- 02 → Dimmer Fine
- 03 → Proportional CCT
- 04 → Step CCT
- 05 → Green Saturation
- 06 → Special Functions
- 07 → Zoom

Drawing Size - Manual Yoke Version



Drawing Size - Pole operated Yoke Version



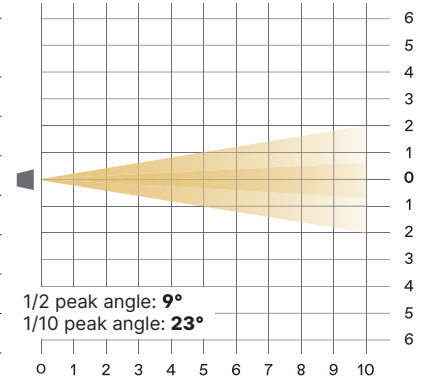
Models

Product	Code
Otello 6 HD FullSpectrum + Manual Yoke, Manual Zoom	F144Q090M
Otello 6 HD FullSpectrum + Manual Yoke, Motorized Zoom	F144Q000M
Otello 6 HD FullSpectrum + Pole Operated	F144Q010M

Otello 6 HD FullSpectrum +

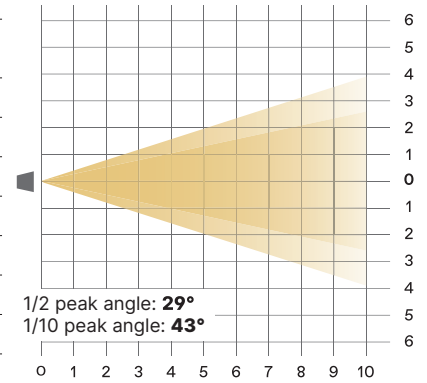
Optic: Minimum Zoom

Distance(m)	1	2	3	4	5	6	7	8	9	10	
lux	3.200K	105.546	26.387	11.727	6.597	4.222	2.932	2.154	1.649	1.303	1.055
	5.600K	111.132	27.783	12.348	6.946	4.445	3.087	2.268	1.736	1.372	1.111
1/2 P.A. Ø (m)	0,16	0,31	0,47	0,63	0,79	0,94	1,10	1,26	1,42	1,57	
1/10 P.A. Ø (m)	0,41	0,81	1,22	1,63	2,03	2,44	2,85	3,26	3,66	4,07	
lux	3.200K	CRI 96		TLCI 92.1							
	5.600K	CRI 96		TLCI 95.2							



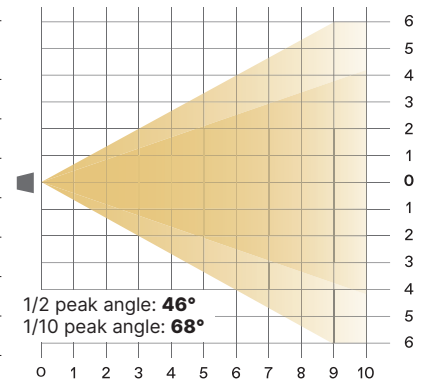
Optic: Medium Zoom

Distance(m)	1	2	3	4	5	6	7	8	9	10	
lux	3.200K	27.342	6.836	3.038	1.709	1.094	760	558	427	338	273
	5.600K	29.253	7.313	3250	1828	1170	813	597	457	361	293
1/2 P.A. Ø (m)	0,52	1,03	1,55	2,07	2,59	3,10	3,62	4,14	4,66	5,17	
1/10 P.A. Ø (m)	0,79	1,58	2,36	3,15	3,94	4,73	5,51	6,30	7,09	7,88	
lux	3.200K	CRI 96		TLCI 93							
	5.600K	CRI 96		TLCI 96							



Optic: Maximum Zoom

Distance(m)	1	2	3	4	5	6	7	8	9	10	
lux	3.200K	11.907	2.977	1.323	744	476	331	243	186	147	119
	5.600K	12.838	3.210	1.426	802	514	357	262	201	158	128
1/2 P.A. Ø (m)	0,85	1,70	2,55	3,40	4,24	5,09	5,94	6,79	7,64	8,49	
1/10 P.A. Ø (m)	1,35	2,70	4,05	5,40	6,75	8,09	9,44	10,79	12,14	13,49	
lux	3.200K	CRI 96		TLCI 93							
	5.600K	CRI 96		TLCI 95.5							



Otello 6 HD FullSpectrum + Minimum Zoom - 3.200K

General

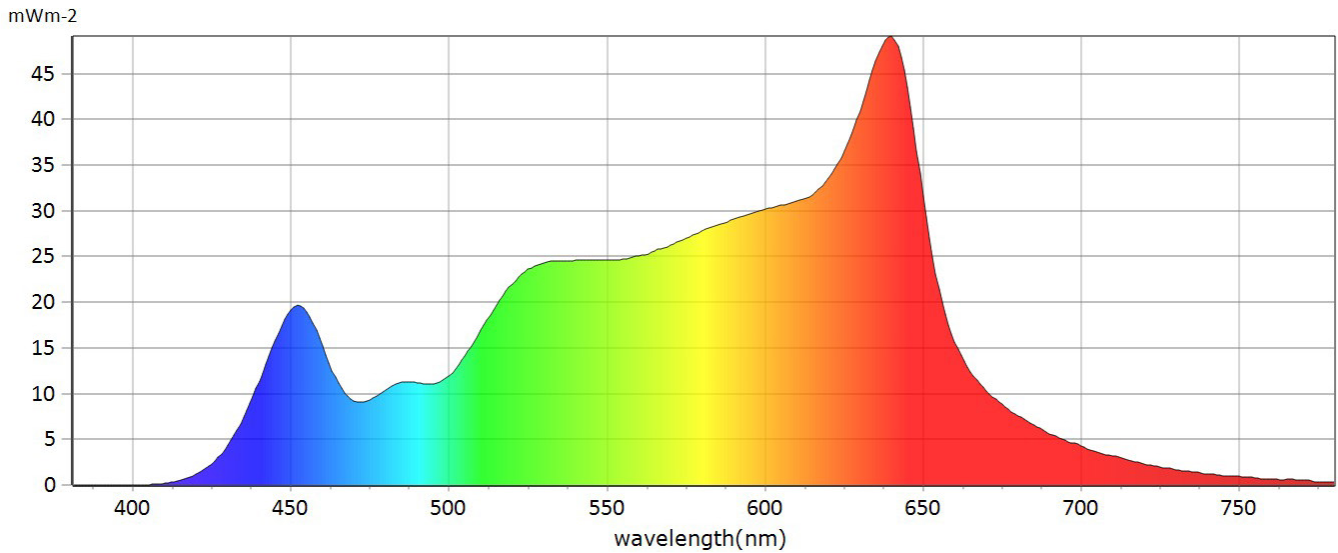
● CCT	3221 K
● x	0,4206
● y	0,3992
● LambdaD	582 mm
● LambdaP	639 mm



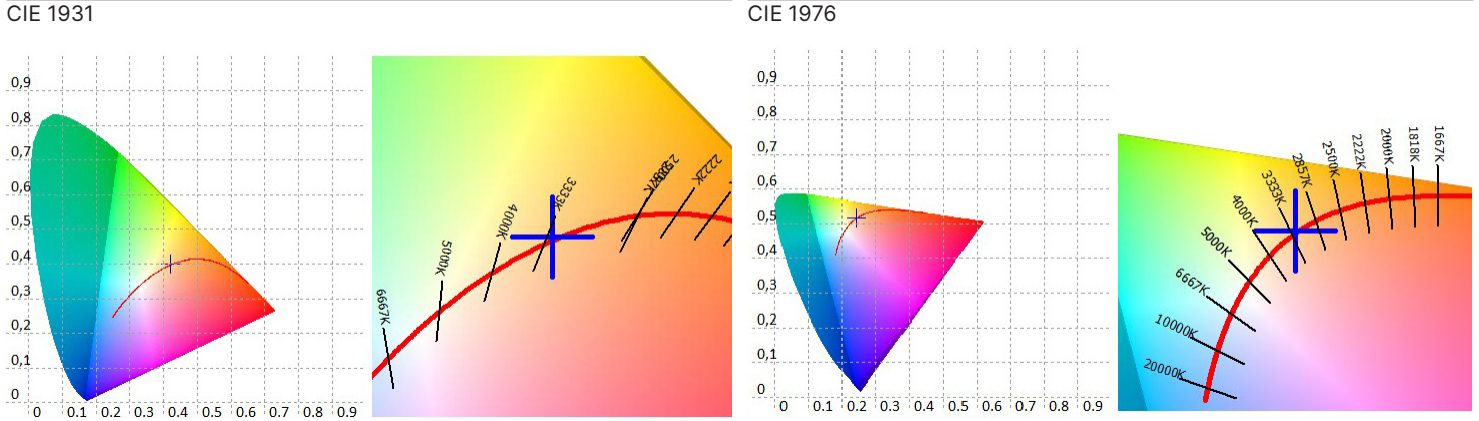
Measurements

CCT	3221 K	u'10	0,2466	Duv	0,0006	GAI	64,6	IRR	5,852	R6	95,2	R15	96,1
LUX	2.154 lx	v'10	0,5167	MEL	1095 lx	PPFD	27,50 umolm 2s-1	CQS	94,0	R7	96,9		
I-Time	6000 us	X	1961,04	LambdaPV	49,11	PFD	28,24 umolm 2s-1	CRI	96	R8	95,7		
x	0,4206	Y	1861,34	LambdaD	582 nm	PFD-B	3,448 umolm 2s-1	TLCI	92,1	R9	87,5		
y	0,3992	Z	840,06	LambdaP	639 nm	PFD-G	11,29 umolm 2s-1	R1	98,0	R10	88,5		
u'	0,2421	delta-x	0,0007	Purity	45,95%	PFD-R	12,76 umolm 2s-1	R2	96,1	R11	95,5		
v'	0,5170	delta-y	0,0017	fc	173,0	PFD-UV	0,0004 umolm 2s-1	R3	91,5	R12	81,8		
x10	0,4258	delta-u'	-0,0003	Rf	93,6	PFD-FR	-0,7439 umolm 2s-1	R4	96,3	R13	97,5		
y10	0,3965	delta-v'	0,0008	Rg	102,1	S/P	1,51	R5	96,5	R14	94,3		

Spectrum



Otello 6 HD FullSpectrum + Minimum Zoom - 3.200K



CRI values, only R1-R8 are used to calculate final CRI

R1	R2	R3	R4	R5	R6	R7	R8	R9	R10	R11	R12	R13	R14	R15
98,0	96,4	91,5	96,3	96,9	95,2	96,9	95,7	87,5	88,5	95,5	81,8	97,5	94,3	96,1

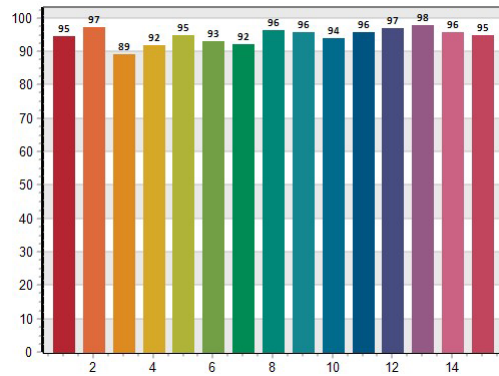
TM30 C values, 16 binned values out of total of 99 C values

C1	C2	C3	C4	C5	C6	C7	C8	C9	C10	C11	C12	C13	C14	C15	C16
95,0	96,4	92,3	94,1	92,6	92,5	95,6	95,9	96,5	91,6	88,5	90,1	92,5	90,6	91,6	88,4

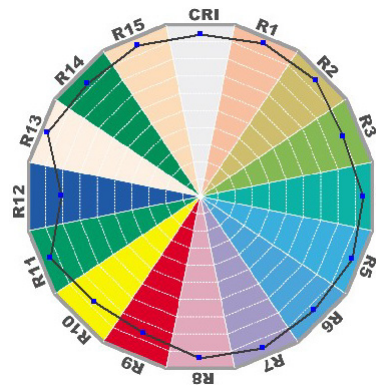
CQS Q values

Q1	Q2	Q3	Q4	Q5	Q6	Q7	Q8	Q9	Q10	Q11	Q12	Q13	Q14	Q15
94,5	97,2	89,1	91,7	94,7	93,0	92,0	96,3	95,6	93,9	95,7	97,0	97,8	95,6	94,9

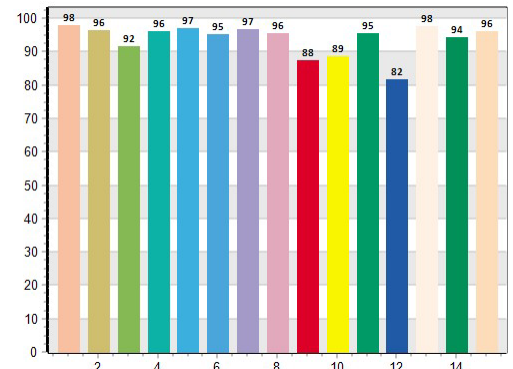
CQS: 94, 03



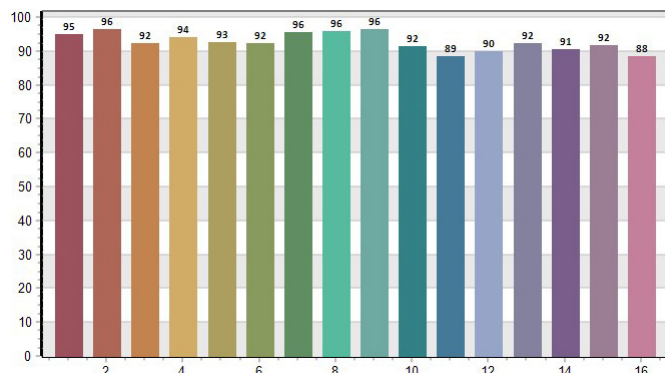
CRI-2



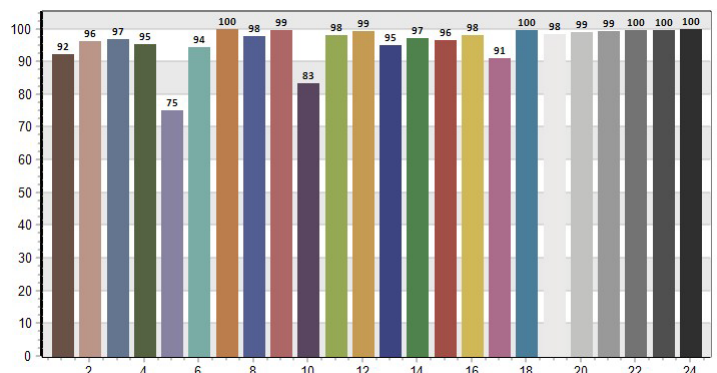
CRI: 95, 85



TM30: 93, 59

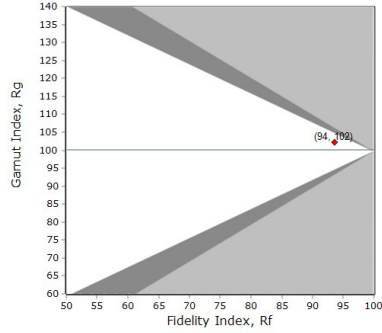
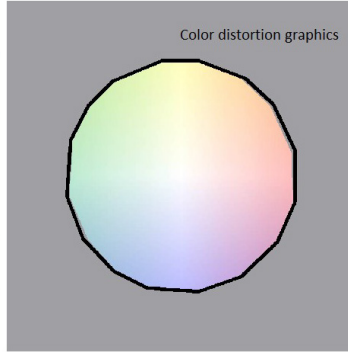
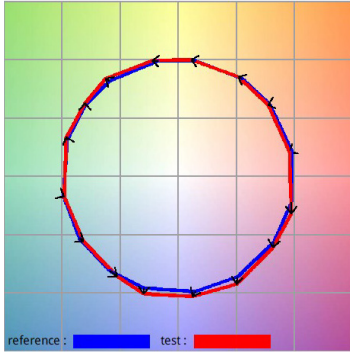


TLCI: 93, 11



Otello 6 HD FullSpectrum + Minimum Zoom - 3.200K

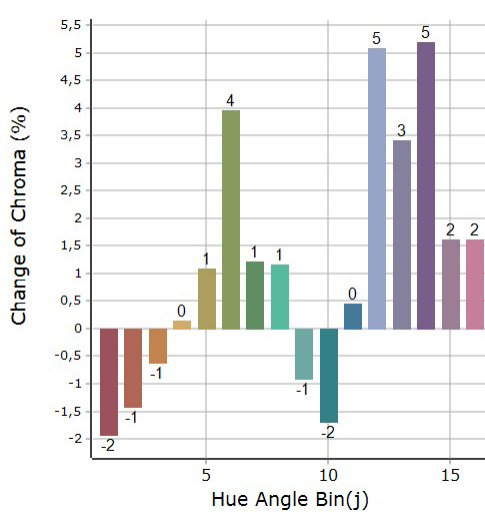
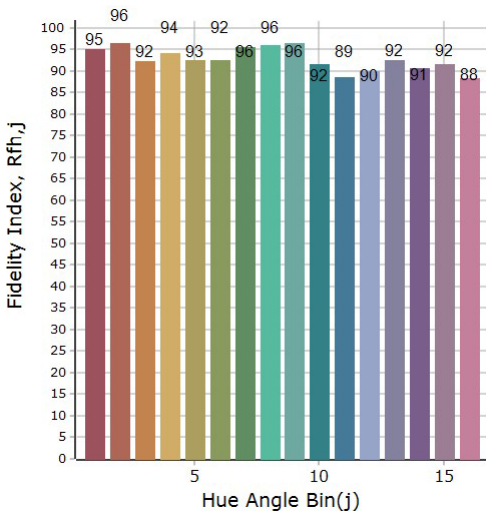
General Color Rendition



Rf
93,6
Fidelity index Rf

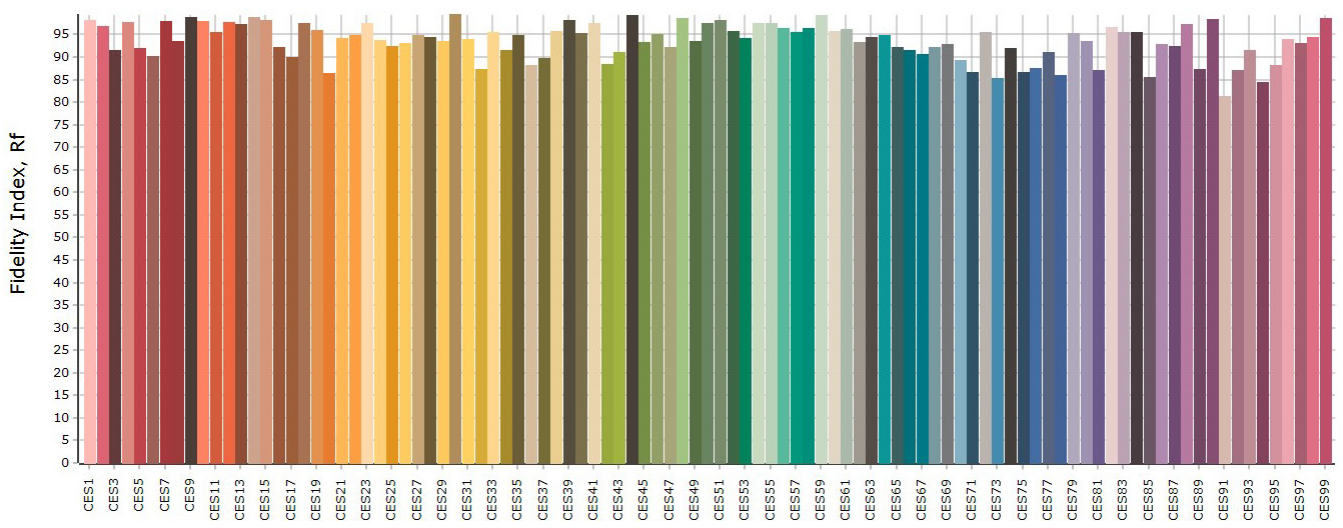
Rg
102,1
Gammut index Rg

Color Rendition by Hue



Hue Bin	graphic shifts (%)		
	Rf	Chroma	Hue
1	95,0	-1,9%	-0,9%
2	96,4	-1,4%	0,8%
3	92,3	-0,6%	3,3%
4	94,1	0,1%	2,9%
5	92,6	1,1%	3,4%
6	92,5	4,0%	1,3%
7	95,6	1,2%	-1,4%
8	95,9	1,2%	-1,9%
9	96,5	-0,9%	0,4%
10	91,6	-1,7%	3,8%
11	88,5	0,4%	7,0%
12	90,1	5,1%	1,4%
13	92,5	3,4%	-2,6%
14	90,6	5,2%	-3,5%
15	91,6	1,6%	-4,1%
16	88,4	1,6%	-7,4%

Color Fidelity by Sample



Otello 6 HD FullSpectrum + Medium Zoom - 3.200K

General

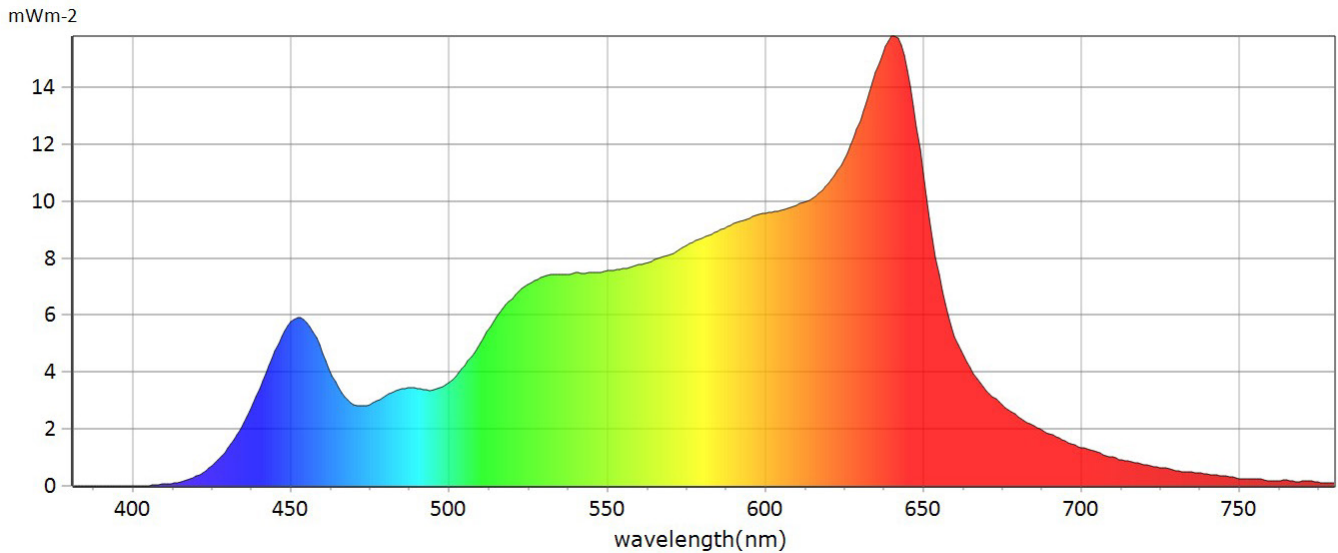
● CCT	3149 K
● x	0,4259
● y	0,3986
● LambdaD	582 nm
● LambdaP	640 nm



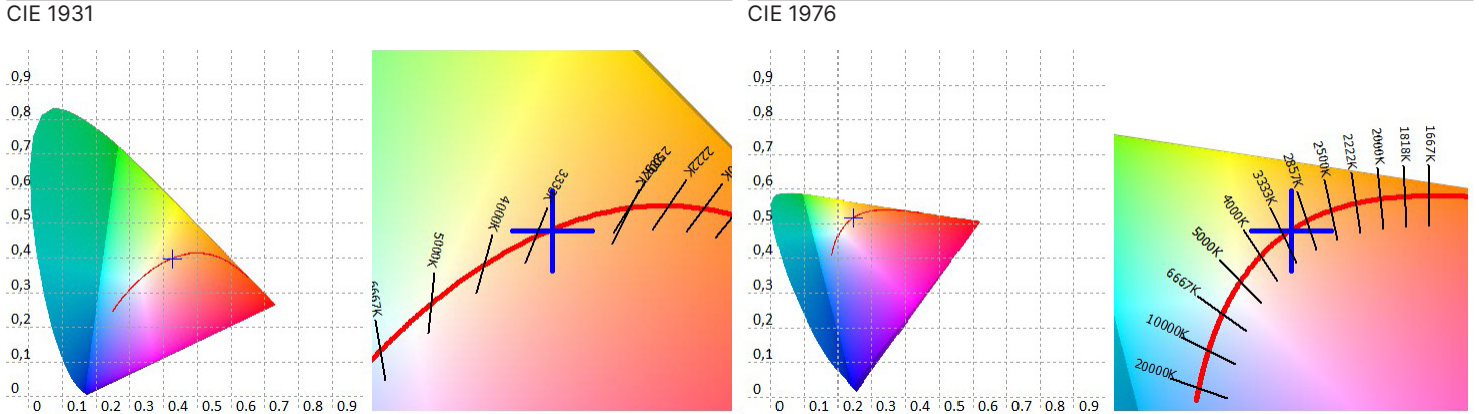
Measurements

CCT	3149 K	u'10	0,2501	Duv	-0,0006	GAI	63,9	IRR	1,838	R6	95,9	R15	96,9
LUX	558 lx	v'10	0,5172	MEL	332,1 lx	PPFD	8,659 umolm 2s-1	CQS	93,7	R7	96,7		
I-Time	18000 us	X	618,15	LambdaPV	15,80	PFD	8,898 umolm 2s-1	CRI	96	R8	95,9		
x	0,4259	Y	578,49	LambdaD	582 nm	PFD-B	1,048 umolm 2s-1	TLCI	93	R9	89,1		
y	0,3986	Z	254,78	LambdaP	640 nm	PFD-G	3,483 umolm 2s-1	R1	98,4	R10	90,1		
u'	0,2458	delta-x	-0,0008	Purity	47,59%	PFD-R	4,129 umolm 2s-1	R2	97,1	R11	95,5		
v'	0,5175	delta-y	-0,0017	fc	53,76	PFD-UV	0,0001 umolm 2s-1	R3	92,1	R12	83,9		
x10	0,4308	delta-u'	0,0002	Rf	93,6	PFD-FR	0,2394 umolm 2s-1	R4	96,2	R13	98,2		
y10	0,3960	delta-v'	-0,0008	Rg	102,6	S/P	1,48	R5	97,6	R14	94,5		

Spectrum



Otello 6 HD FullSpectrum + Medium Zoom - 3.200K



CRI values, only R1-R8 are used to calculate final CRI

R1	R2	R3	R4	R5	R6	R7	R8	R9	R10	R11	R12	R13	R14	R15
98,4	97,1	92,1	96,2	97,6	95,9	96,7	95,9	89,1	90,1	95,4	83,9	98,3	94,5	96,9

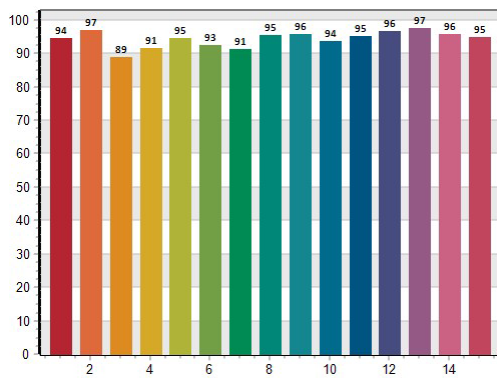
TM30 C values, 16 binned values out of total of 99 C values

C1	C2	C3	C4	C5	C6	C7	C8	C9	C10	C11	C12	C13	C14	C15	C16
95,2	96,5	91,8	93,9	92,3	92,0	95,4	95,4	96,6	92,1	88,9	89,9	92,4	90,6	91,6	87,8

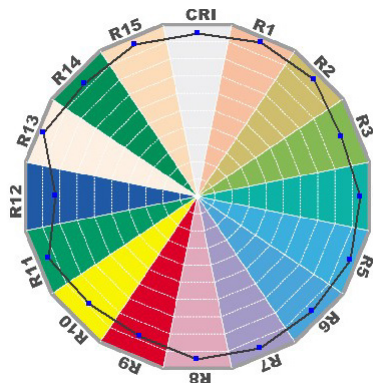
CQS Q values

Q1	Q2	Q3	Q4	Q5	Q6	Q7	Q8	Q9	Q10	Q11	Q12	Q13	Q14	Q15
94,4	97,0	88,9	91,4	94,6	92,5	91,1	95,4	95,6	93,5	95,1	96,5	97,5	95,7	94,9

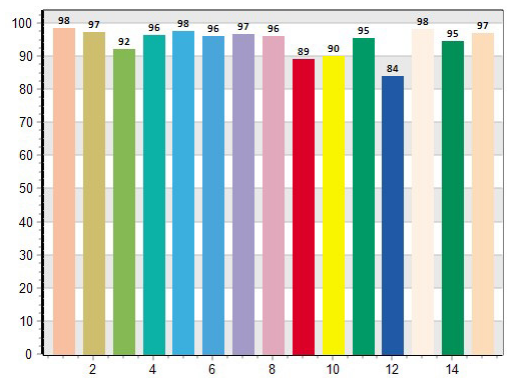
CQS: 93,70



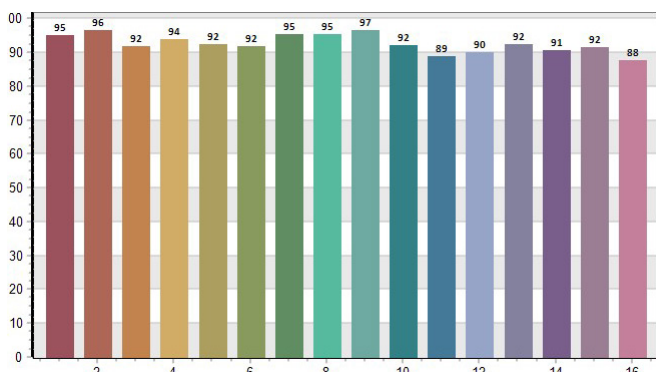
CRI-2



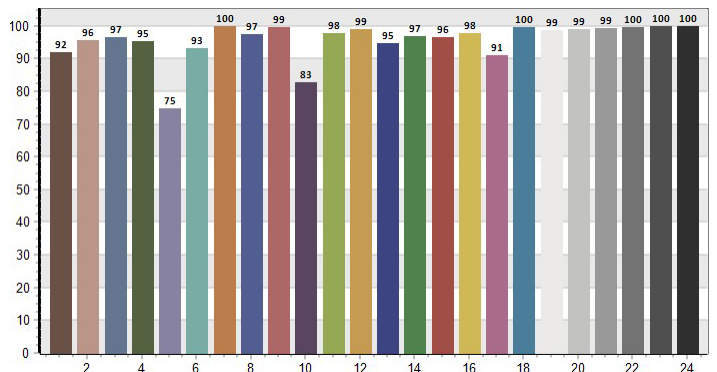
CRI: 96,25



TM30: 93, 58

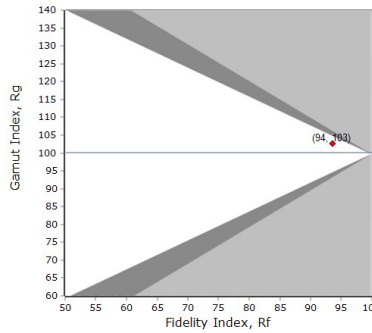
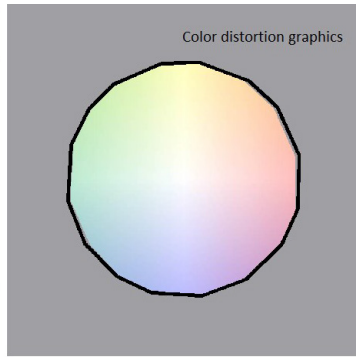
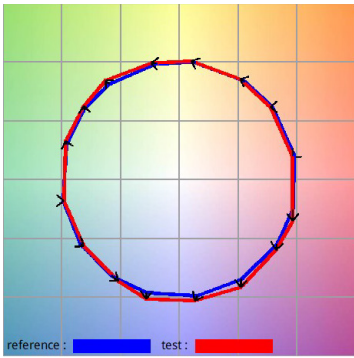


TLCI: 92, 93



Otello 6 HD FullSpectrum + Medium Zoom - 3.200K

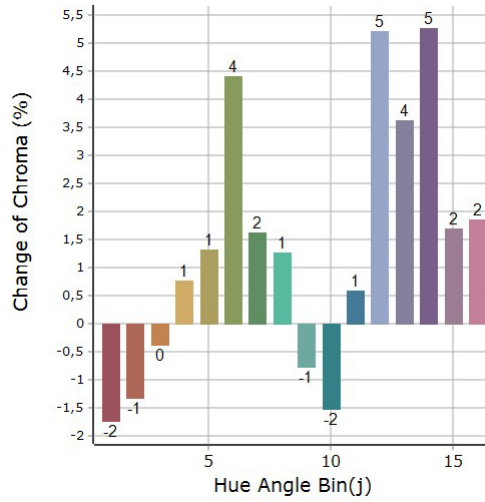
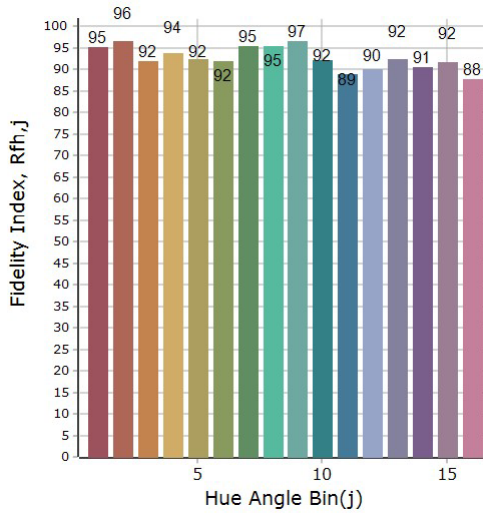
General Color Rendition



Rf
93,6
Fidelity index Rf

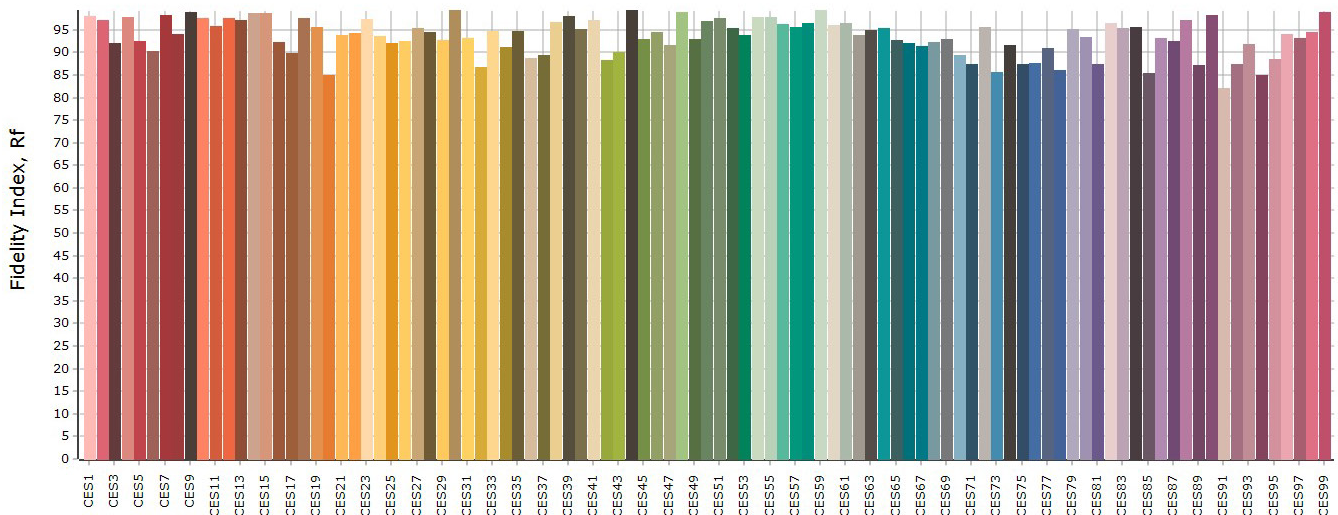
Rg
102,6
Gammut index Rg

Color Rendition by Hue



graphic shifts (%)			
Hue Bin	Rf	Chroma	Hue
1	95,2	-1,7%	-1,0%
2	96,5	-1,3%	1,0%
3	91,8	-0,4%	3,6%
4	93,9	0,8%	3,0%
5	92,3	1,3%	3,7%
6	92,0	4,4%	1,0%
7	95,4	1,6%	-1,7%
8	95,4	1,3%	-2,2%
9	96,6	-0,8%	0,2%
10	92,1	-1,5%	3,5%
11	88,9	0,6%	6,7%
12	89,9	5,2%	1,2%
13	92,4	3,6%	-2,6%
14	90,6	5,3%	-3,5%
15	91,6	1,7%	-4,2%
16	87,8	1,9%	-8,4%

Color Fidelity by Sample



Otello 6 HD FullSpectrum + Maximum Zoom - 3.200K

General

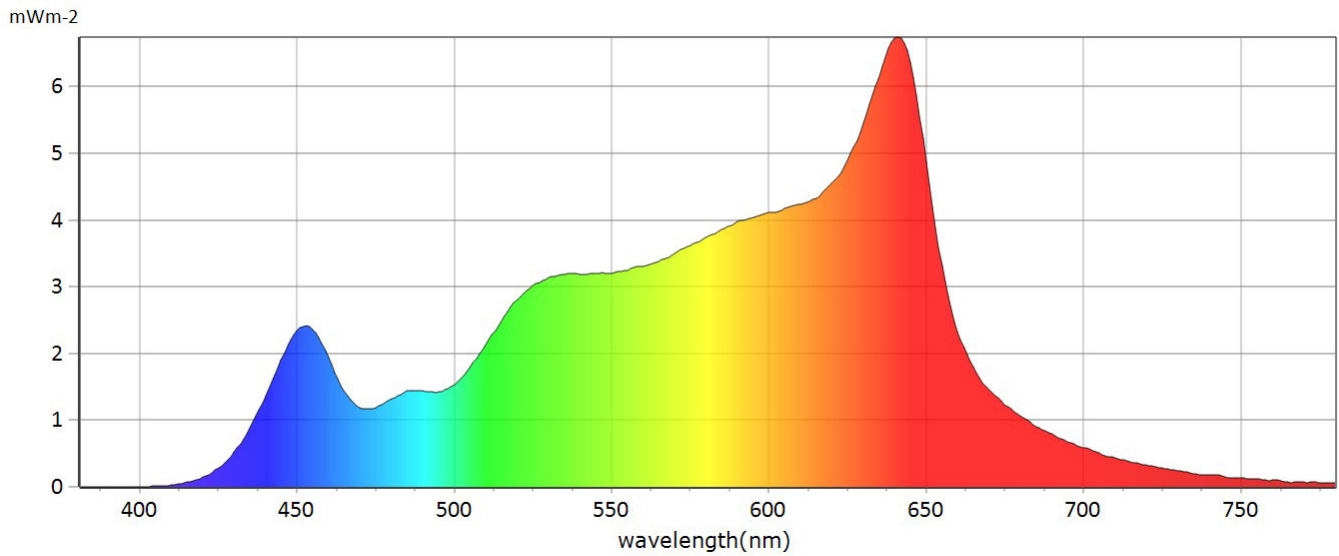
● CCT	3117 K
● x	0,4290
● y	0,4015
● LambdaD	582 nm
● LambdaP	640 nm



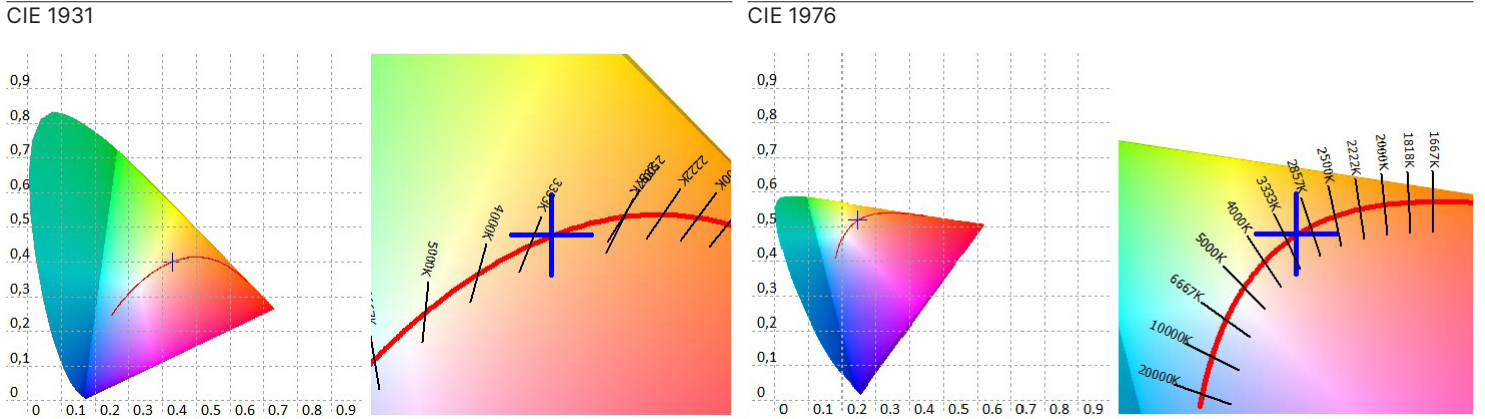
Measurements

CCT	3117 K	u'10	0,2510	Duv	0,0001	GAI	61,8	IRR	0,7849	R6	95,7	R15	96,3
LUX	243 lx	v'10	0,5188	MEL	139,5 lux	PPFD	3,703 umolm ² s ⁻¹	CQS	93,8	R7	96,9		
I-Time	42000 us	X	264,41	LambdaPV	6,743	PFD	3,808 umolm ² s ⁻¹	CRI	96	R8	95,6		
x	0,4290	Y	247,45	LambdaD	582 nm	PFD-B	0,4318 umolm ² s ⁻¹	TLCI	93	R9	87,9		
y	0,4015	Z	104,52	LambdaP	640 nm	PFD-G	1,489 umolm ² s ⁻¹	R1	98,0	R10	89,5		
u'	0,2466	delta-x	0,0001	Purity	49,35%	PFD-R	1,782 umolm ² s ⁻¹	R2	96,8	R11	95,9		
v'	0,5192	delta-y	0,0003	fc	23,00	PFD-UV	0,0001 umolm ² s ⁻¹	R3	92,1	R12	83,1		
x10	0,4341	delta-u'	-0,0001	Rf	93,7	PFD-FR	0,1058 umolm ² s ⁻¹	R4	96,6	R13	97,7		
y10	0,3988	delta-v'	0,0001	Rg	102,2	S/P	1,46	R5	97,1	R14	94,5		

Spectrum



Otello 6 HD FullSpectrum + Maximum Zoom - 3.200K



CRI values, only R1-R8 are used to calculate final CRI

R1	R2	R3	R4	R5	R6	R7	R8	R9	R10	R11	R12	R13	R14	R15
98,0	96,8	92,1	96,6	97,1	95,7	96,9	95,6	87,9	89,5	95,9	83,1	97,7	94,5	96,3

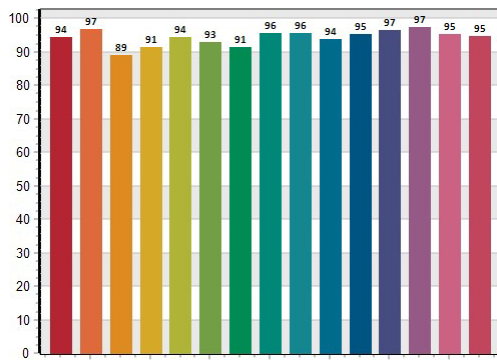
TM30 C values, 16 binned values out of total of 99 C values

C1	C2	C3	C4	C5	C6	C7	C8	C9	C10	C11	C12	C13	C14	C15	C16
95,1	96,3	92,1	94,3	92,4	92,6	95,6	96,0	96,5	91,8	89,0	90,1	92,5	90,7	91,7	87,9

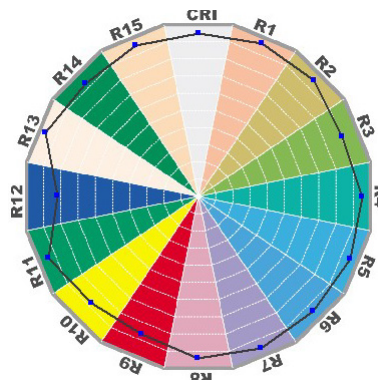
CQS Q values

Q1	Q2	Q3	Q4	Q5	Q6	Q7	Q8	Q9	Q10	Q11	Q12	Q13	Q14	Q15
94,3	96,8	89,2	91,5	94,5	92,8	91,5	95,5	95,6	93,7	95,3	96,6	97,4	95,4	94,7

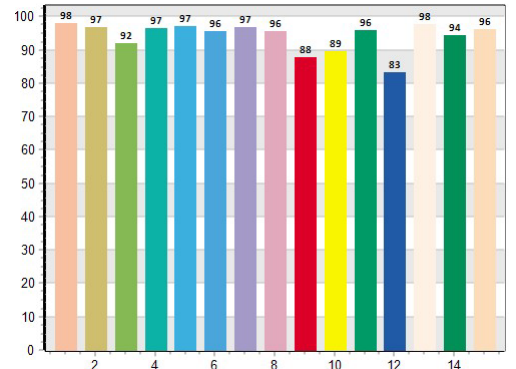
CQS: 93, 79



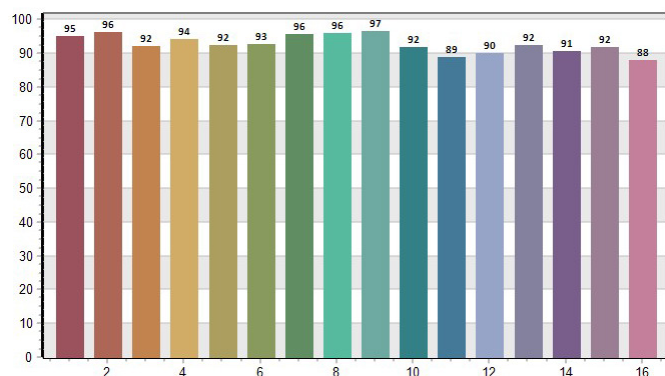
CRI-2



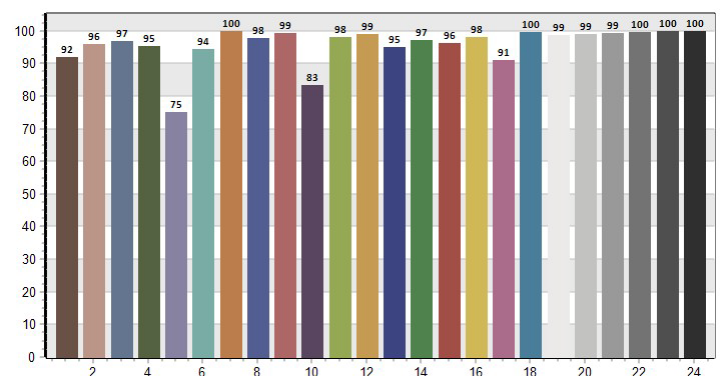
CRI: 96, 09



TM30: 93, 69

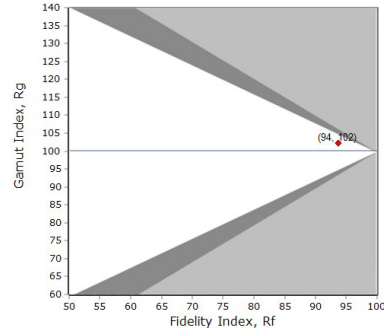
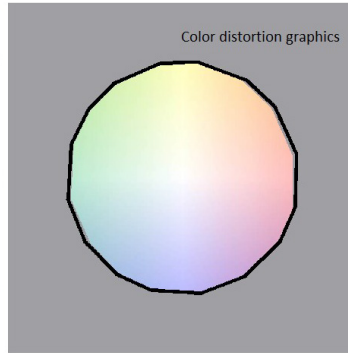
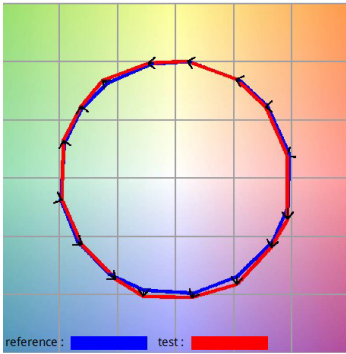


TLCI: 93, 11



Otello 6 HD FullSpectrum + Maximum Zoom - 3.200K

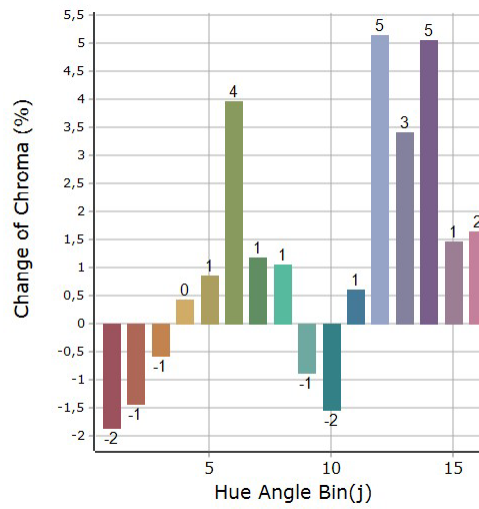
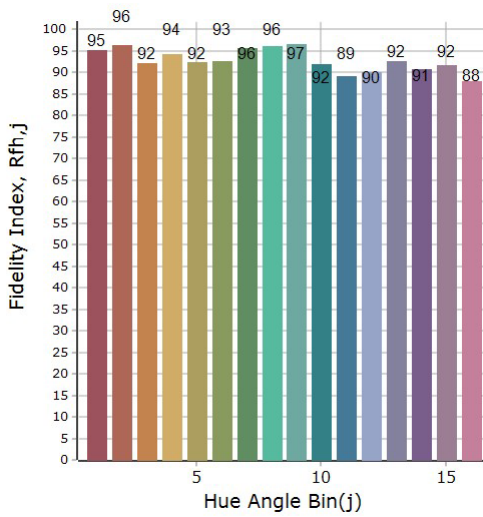
General Color Rendition



Rf
39,7
Fidelity index Rf

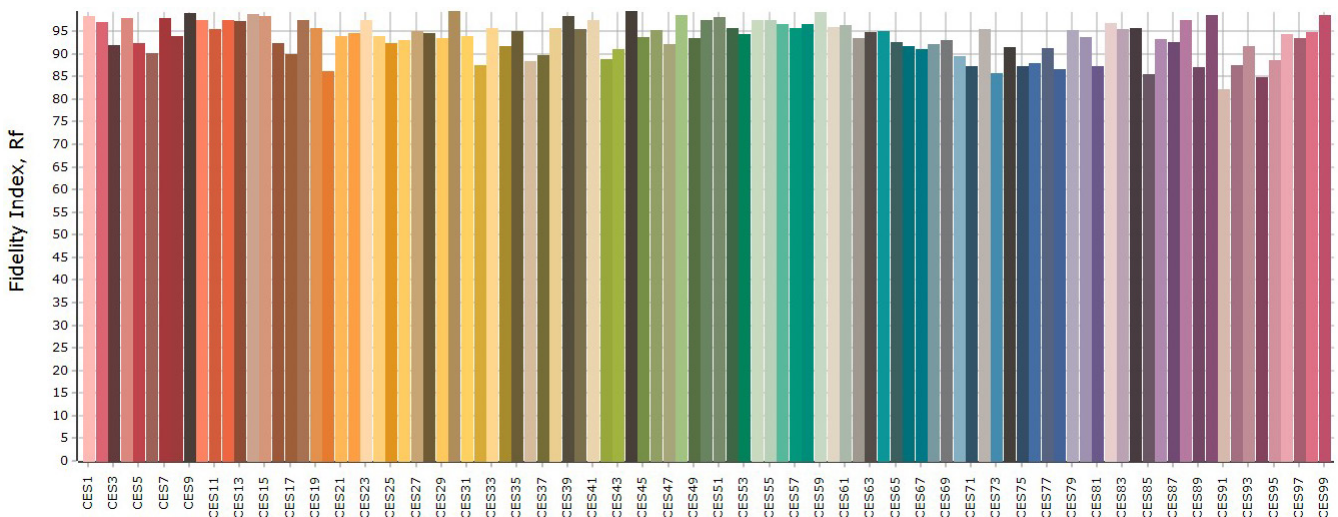
Rg
102,2
Gammut index Rg

Color Rendition by Hue



graphic shifts (%)			
Hue Bin	Rf	Chroma	Hue
1	95,1	-1,9%	-1,0%
2	96,3	-1,4%	-1,0%
3	92,1	-0,6%	3,4%
4	94,3	0,4%	2,8%
5	92,4	0,9%	3,6%
6	92,6	4,0%	1,1%
7	95,6	1,2%	-1,5%
8	96,0	1,1%	-1,9%
9	96,5	-0,9%	0,5%
10	91,8	1,5%	3,8%
11	89,0	0,6%	6,7%
12	90,1	5,2%	1,0%
13	92,5	3,4%	-2,8%
14	90,7	5,1%	-3,7%
15	91,7	1,5%	-4,2%
16	87,9	1,7%	-8,4%

Color Fidelity by Sample



Otello 6 HD FullSpectrum + Minimum Zoom - 5.600K

General

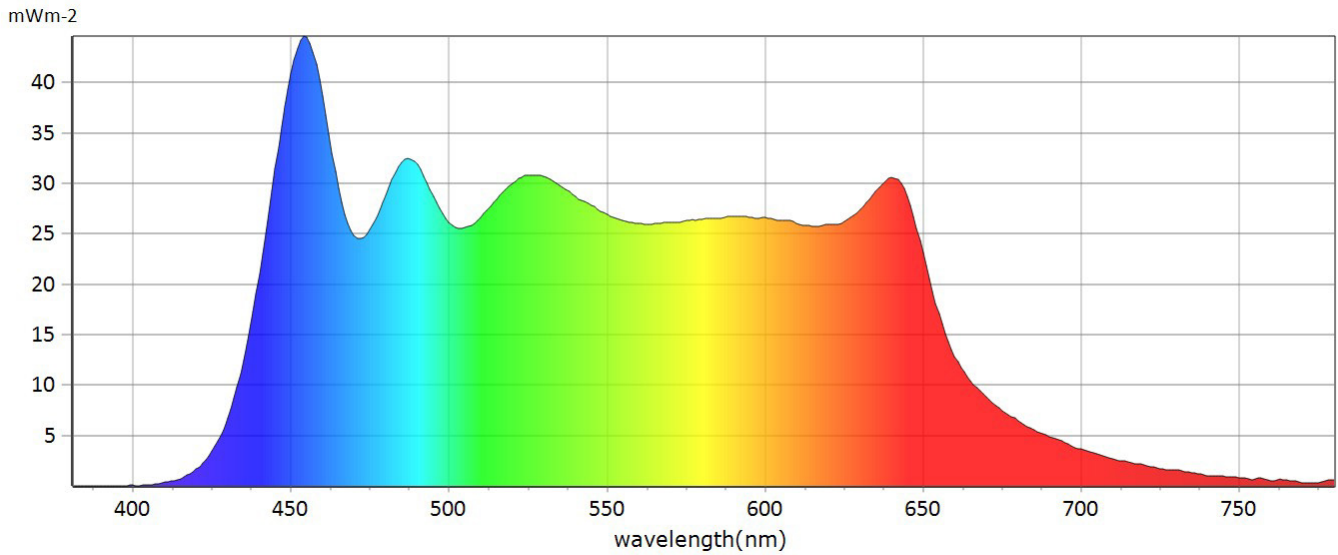
● CCT	5716 K
● x	0,3275
● y	0,3455
● LambdaD	522 nm
● LambdaP	453 nm



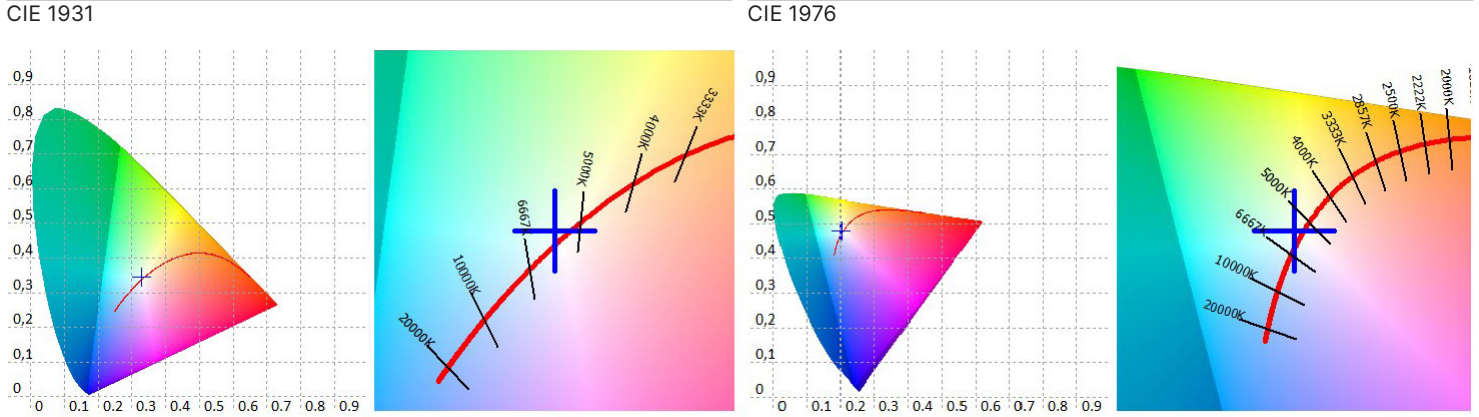
Measurements

CCT	5716 K	u'10	0,2020	Duv	0,0045	GAI	91,1	IRR	6,752	R6	96,2	R15	95,7
LUX	2268 lx	v'10	0,4823	MEL	2070 lx	PPFD	30,31 umolm 2s-1	CQS	95,9	R7	94,3		
I-Time	4800 us	X	1882,72	LambdaPV	44,60	PFD	30,97 umolm 2s-1	CRI	96	R8	93,9		
x	0,3275	Y	1986,33	LambdaD	522 nm	PFD-B	8,199 umolm 2s-1	TLCI	95,2	R9	90,9		
y	0,3455	Z	1880,20	LambdaP	453 nm	PFD-G	12,60 umolm 2s-1	R1	98,3	R10	95,4		
u'	0,2018	delta-x	-0,0003	Purity	2,43%	PFD-R	9,505 umolm 2s-1	R2	97,3	R11	98,9		
v'	0,4790	delta-y	0,0086	fc	184,6	PFD-UV	0,0018 umolm 2s-1	R3	97,1	R12	82,6		
x10	0,3308	delta-u'	-0,0034	Rf	92,1	PFD-FR	0,6617 umolm 2s-1	R4	95,9	R13	97,7		
y10	0,3511	delta-v'	0,0043	Rg	97,9	S/P	2,36	R5	97,3	R14	97,4		

Spectrum



Otello 6 HD FullSpectrum + Minimum Zoom - 5.600K



CRI values, only R1-R8 are used to calculate final CRI

R1	R2	R3	R4	R5	R6	R7	R8	R9	R10	R11	R12	R13	R14	R15
98,3	97,3	97,1	95,9	97,3	96,2	94,3	93,9	90,9	95,4	98,9	82,6	97,7	97,4	95,7

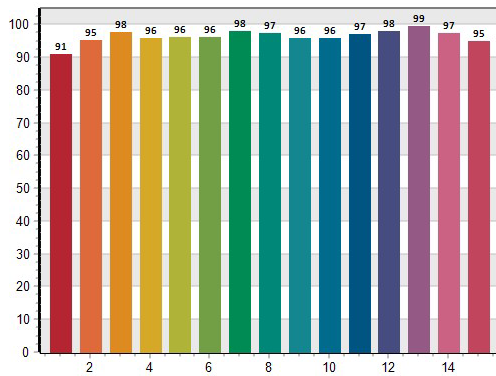
TM30 C values, 16 binned values out of total of 99 C values

C1	C2	C3	C4	C5	C6	C7	C8	C9	C10	C11	C12	C13	C14	C15	C16
92,5	97,8	94,3	89,9	87,4	94,0	91,6	89,4	90,2	90,6	90,7	90,4	88,9	91,2	83,5	95,3

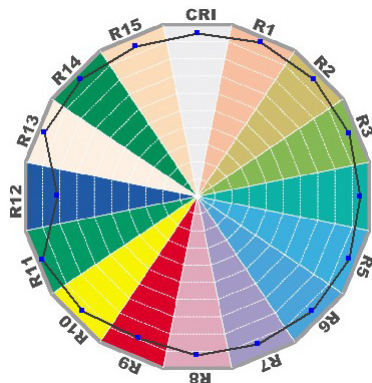
CQS Q values

Q1	Q2	Q3	Q4	Q5	Q6	Q7	Q8	Q9	Q10	Q11	Q12	Q13	Q14	Q15
90,9	95,2	97,6	96,0	96,1	96,0	97,9	97,2	96,0	95,9	97,2	97,9	99,5	97,2	94,8

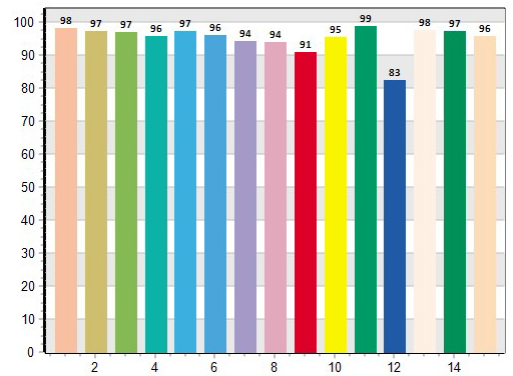
CQS: 95, 90



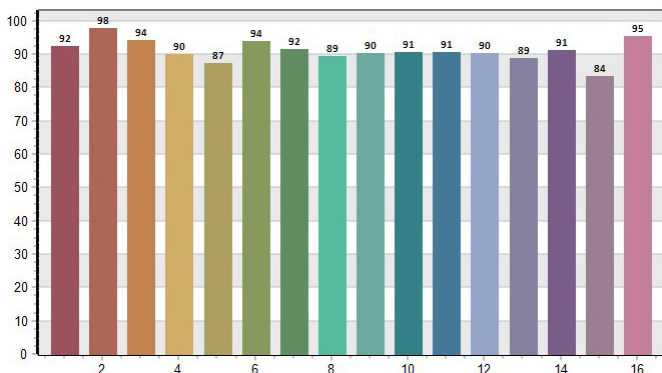
CRI-2



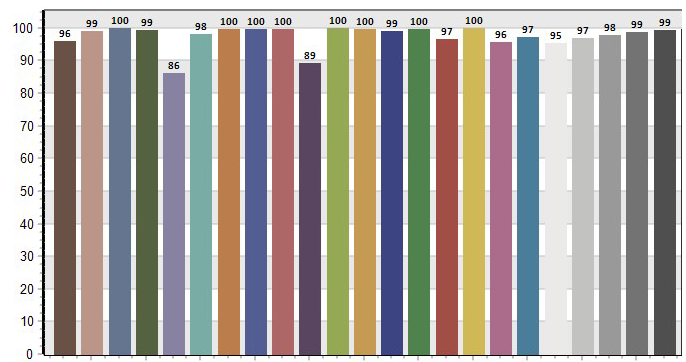
CRI: 96, 29



TM30: 92, 09

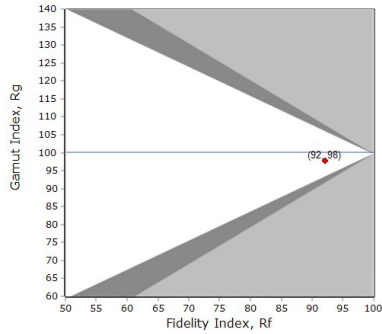
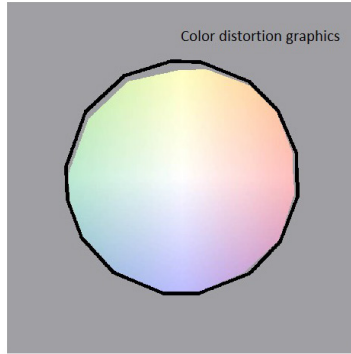
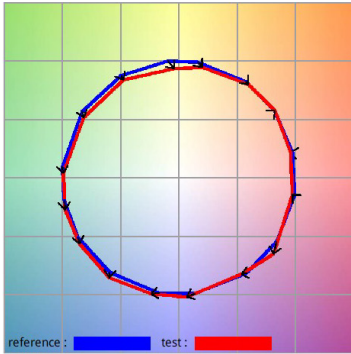


TLCI: 96, 19



Otello 6 HD FullSpectrum + Minimum Zoom - 5.600K

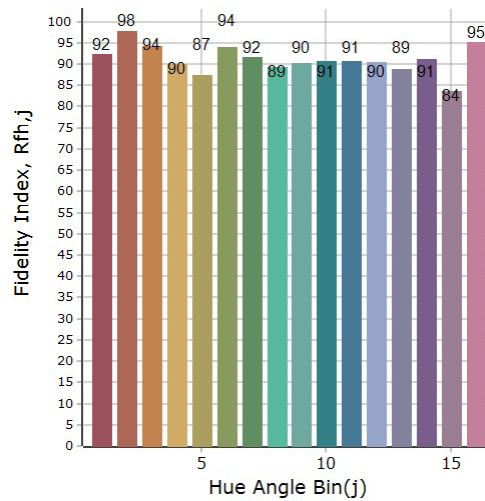
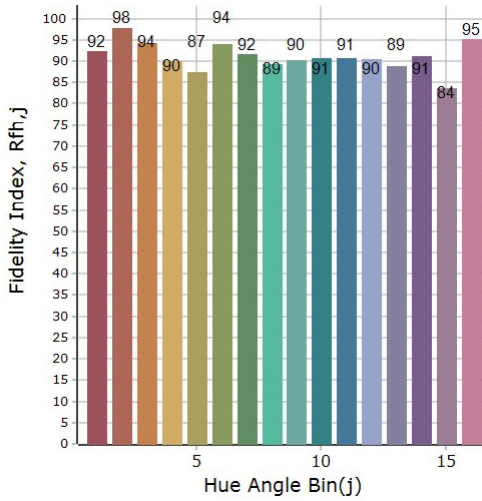
General Color Rendition



Rf
92,1
Fidelity index Rf

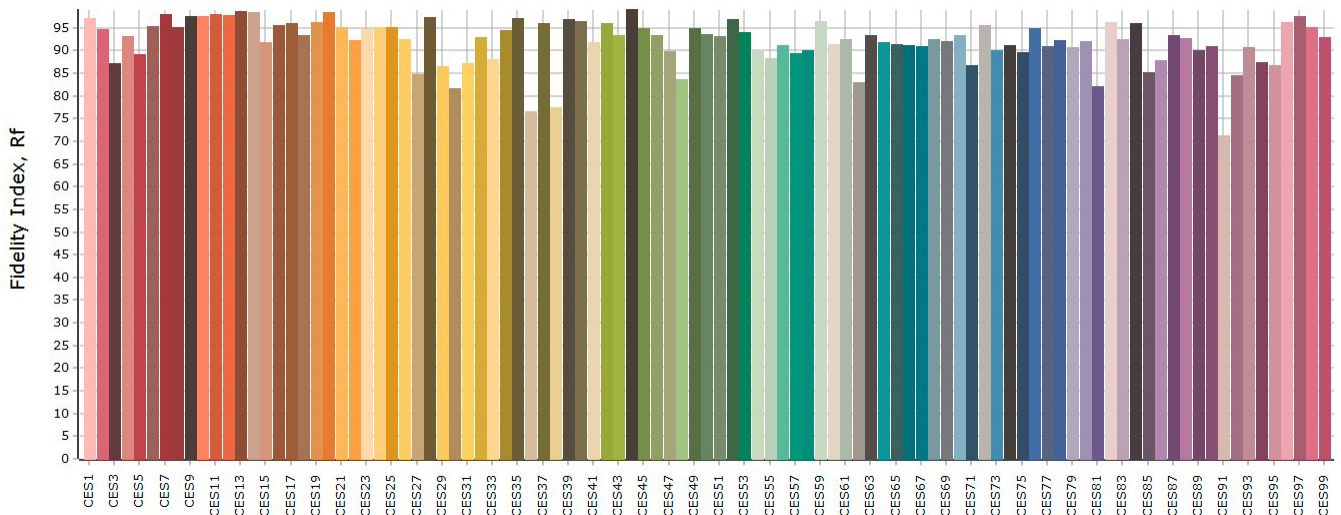
Rg
97,9
Gammut index Rg

Color Rendition by Hue



Hue Bin	graphic shifts (%)		
	Rf	Chroma	Hue
1	92,5	-1,6%	0,9%
2	97,8	0,5%	0,0%
3	94,3	-0,7%	-2,6%
4	89,9	-3,4%	-4,7%
5	87,4	-7,1%	-4,0%
6	94,0	-3,9%	0,1%
7	91,6	-3,9%	3,3%
8	89,4	-1,8%	5,7%
9	90,2	0,8%	8,1%
10	90,6	2,0%	5,0%
11	90,7	4,3%	2,3%
12	90,4	2,0%	-5,5%
13	88,9	1,2%	-7,4%
14	91,2	-1,7%	-4,2%
15	83,5	3,8%	-9,9%
16	95,3	-1,8%	1,0%

Color Fidelity by Sample



Otello 6 HD FullSpectrum + Medium Zoom - 5.600K

General

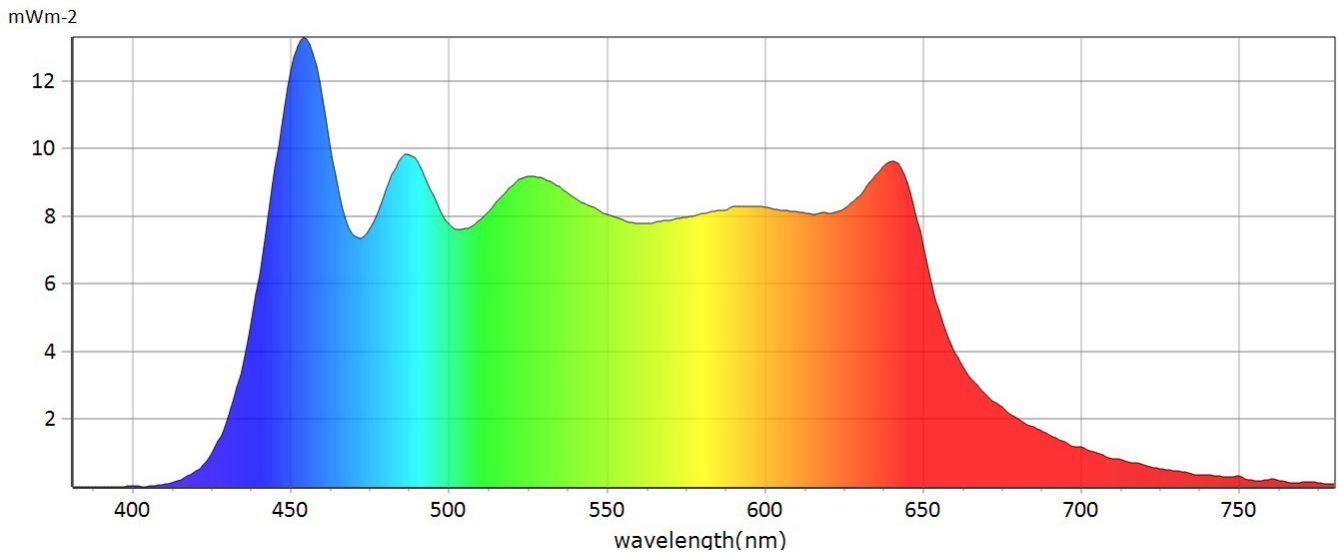
● CCT	5716 K
● x	0,3275
● y	0,3455
● LambdaD	522 nm
● LambdaP	453 nm



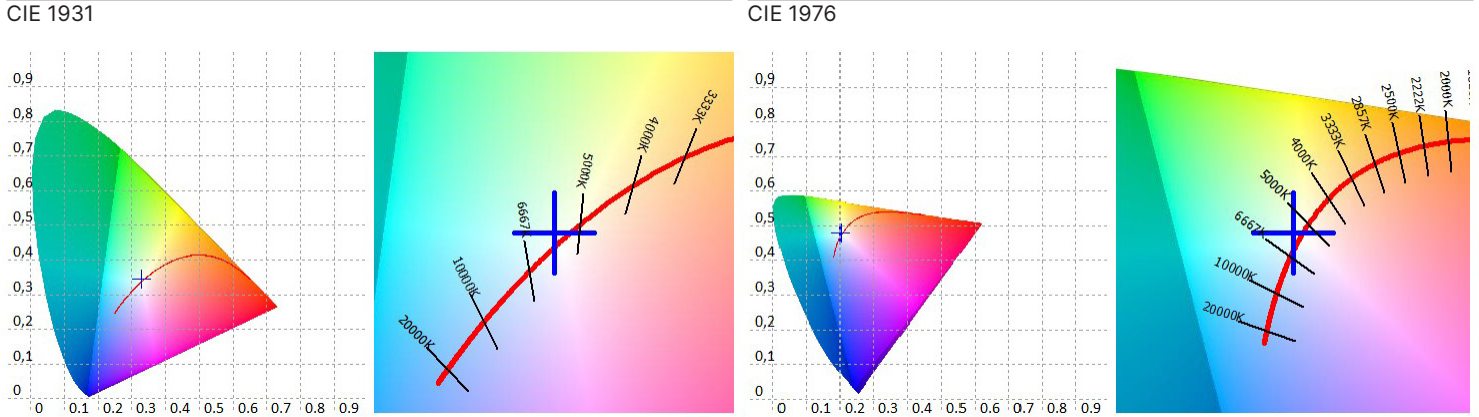
Measurements

CCT	5716 K	u'10	0,2020	Duv	0,0045	GAI	91,1	IRR	6,752	R6	96,2	R15	95,7
LUX	597 lx	v'10	0,4823	MEL	2070 lx	PPFD	30,31 umolm 2s-1	CQS	95,9	R7	94,3		
I-Time	4800 us	X	1882,72	LambdaPV	44,60	PFD	30,97 umolm 2s-1	CRI	96	R8	93,9		
x	0,3275	Y	1986,33	LambdaD	522 nm	PFD-B	8,119 umolm 2s-1	TLCI	76	R9	90,9		
y	0,3455	Z	1880,20	LambdaP	453 nm	PFD-G	12,60 umolm 2s-1	R1	98,3	R10	95,4		
u'	0,2018	delta-x	-0,0003	Purity	2,43%	PFD-R	9,505 umolm 2s-1	R2	97,3	R11	98,9		
v'	0,4790	delta-y	0,0086	fc	184,6	PFD-UV	0,0018 umolm 2s-1	R3	97,1	R12	82,6		
x10	0,3308	delta-u'	-0,0034	Rf	92,1	PFD-FR	0,6617 umolm 2s-1	R4	95,9	R13	97,7		
y10	0,3511	delta-v'	0,0043	Rg	97,9	S/P	2,36	R5	97,3	R14	97,4		

Spectrum



Otello 6 HD FullSpectrum + Medium Zoom - 5.600K



CRI values, only R1-R8 are used to calculate final CRI

R1	R2	R3	R4	R5	R6	R7	R8	R9	R10	R11	R12	R13	R14	R15
98,3	97,3	97,1	95,9	97,3	96,2	94,3	93,9	90,9	95,4	98,9	82,6	97,7	97,4	95,7

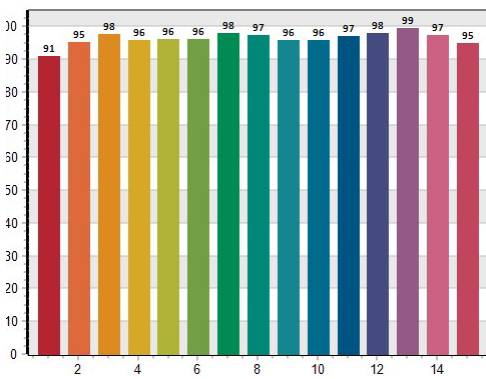
TM30 C values, 16 binned values out of total of 99 C values

C1	C2	C3	C4	C5	C6	C7	C8	C9	C10	C11	C12	C13	C14	C15	C16
92,5	97,8	94,3	89,9	87,4	94,0	91,6	89,4	90,2	90,6	90,7	90,4	88,9	91,2	83,5	95,3

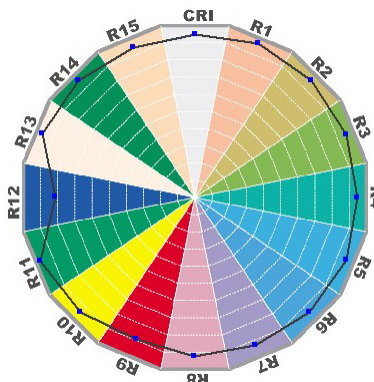
CQS Q values

Q1	Q2	Q3	Q4	Q5	Q6	Q7	Q8	Q9	Q10	Q11	Q12	Q13	Q14	Q15
90,9	95,2	97,6	96,0	96,1	96,0	97,9	97,2	96,0	95,9	97,2	97,9	99,5	97,2	94,8

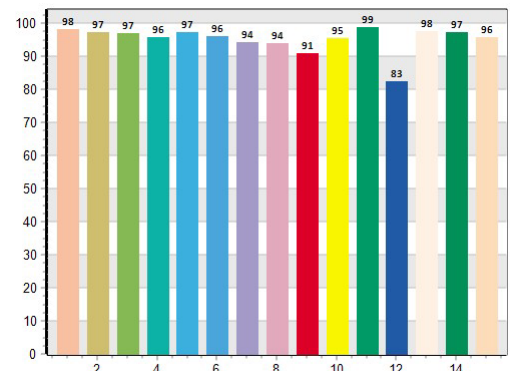
CQS: 95, 90



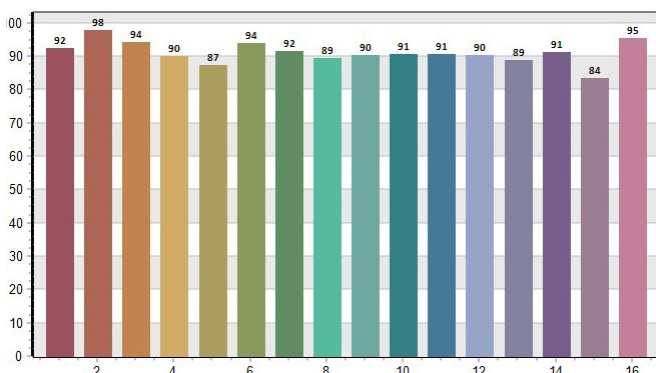
CRI-2



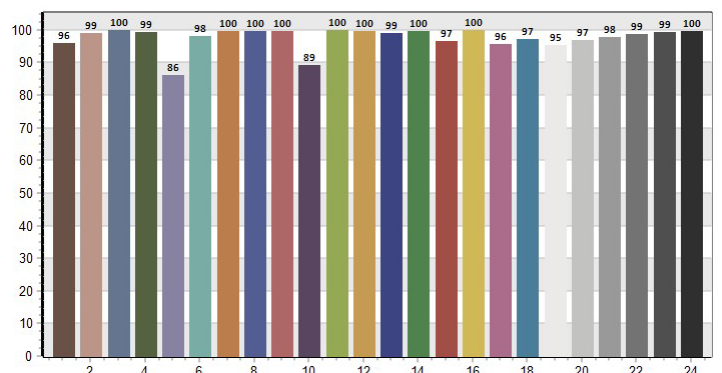
CRI: 96, 29



TM30: 92, 09

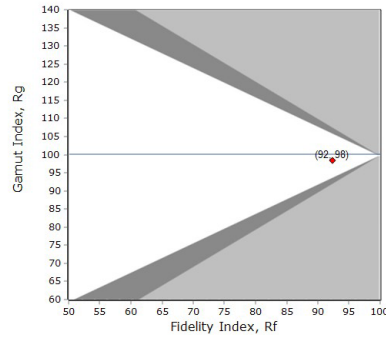
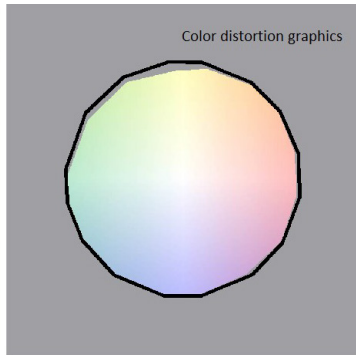
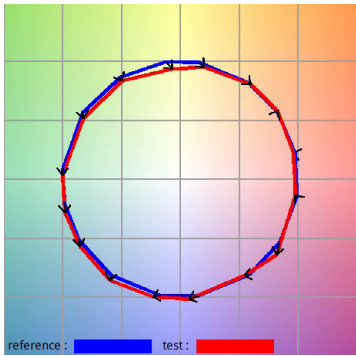


TLCI: 96, 19



Otello 6 HD FullSpectrum + Medium Zoom - 5.600K

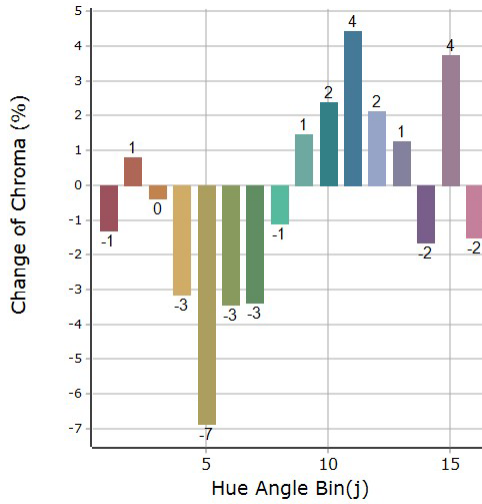
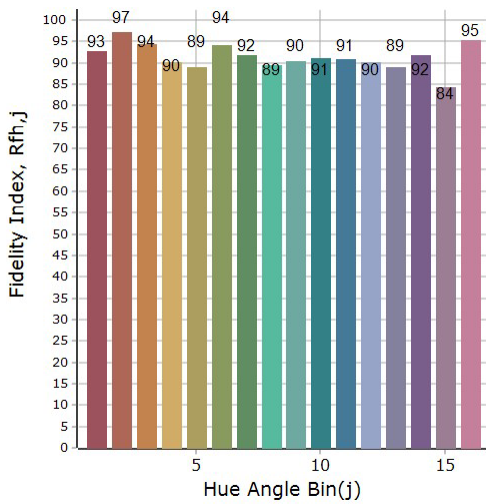
General Color Rendition



Rf
92,3
Fidelity index Rf

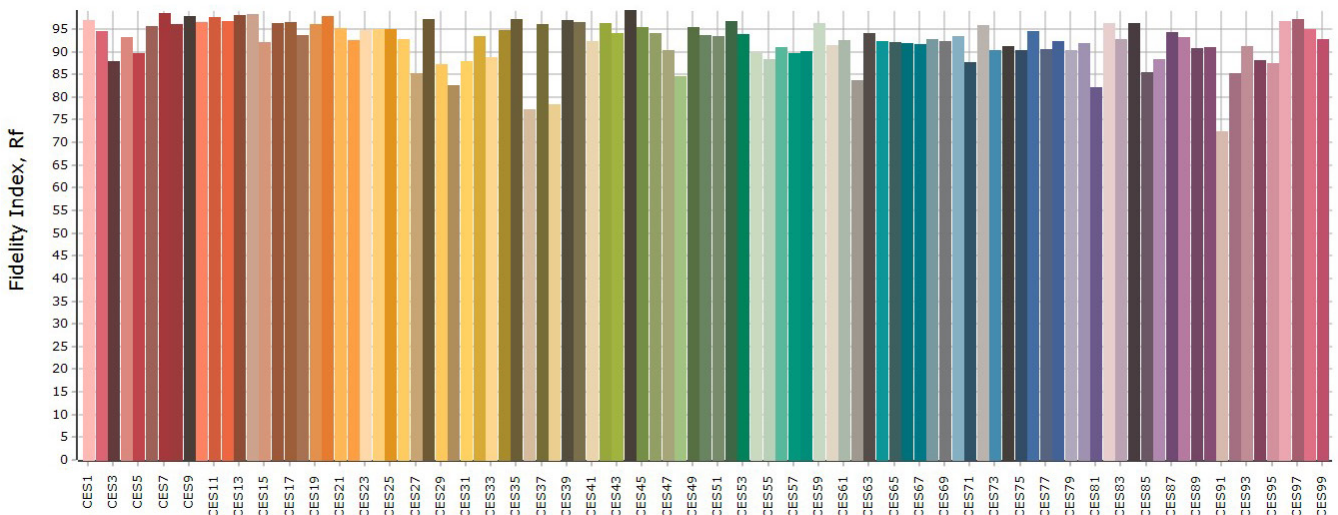
Rg
98,5
Gammut index Rg

Color Rendition by Hue



Hue Bin	graphic shifts (%)		
	Rf	Chroma	Hue
1	92,8	-1,3%	1,0%
2	97,2	0,8%	0,2%
3	94,4	-0,4%	-2,5%
4	90,2	-3,1%	-4,7%
5	88,9	-6,9%	-3,7%
6	94,1	-3,4%	0,4%
7	91,9	-3,4%	3,6%
8	89,4	-1,1%	5,8%
9	90,4	1,5%	7,7%
10	91,2	2,4%	4,5%
11	90,8	4,4%	1,8%
12	90,1	2,1%	-5,7%
13	89,0	1,3%	-7,3%
14	91,8	-1,6%	-3,6%
15	84,2	3,7%	-9,3%
16	95,3	-1,5%	1,4%

Color Fidelity by Sample



Otello 6 HD FullSpectrum + Maximum Zoom - 5.600K

General

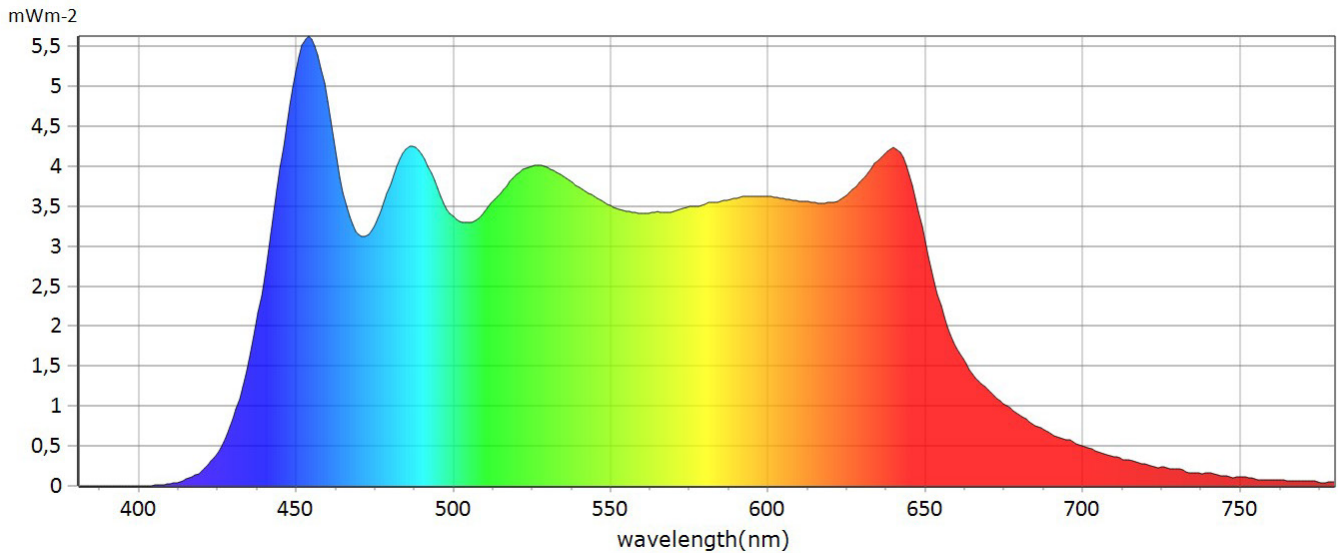
● CCT	5425 K
● x	0,3343
● y	0,3491
● LambdaD	557 nm
● LambdaP	453 nm



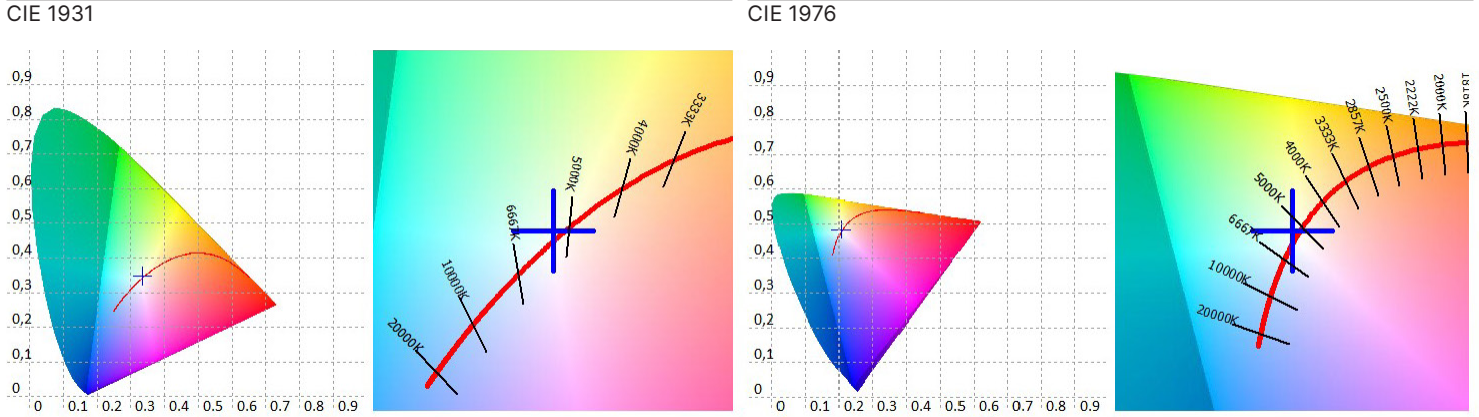
Measurements

CCT	5425 K	u'10	0,2052	Duv	0,0033	GAI	90,2	IRR	0,8876	R6	95,0	R15	96,4
LUX	262	v'10	0,4849	MEL	266,1 lx	PPFD	3,998 umolm 2s-1	CQS	96,2	R7	94,2		
I-Time	36000 us	X	251,26	LambdaPV	5,628	PFD	4,087 umolm 2s-1	CRI	96	R8	97,2		
x	0,3343	Y	262,39	LambdaD	557 nm	PFD-B	1,044 umolm 2s-1	TLCI	95,5	R9	92,4		
y	0,4391	Z	238,03	LambdaP	452 nm	PFD-G	1,655 umolm 2s-1	R1	97,5	R10	93,9		
u'	0,2051	delta-x	0,0001	Purity	5,05%	PFD-R	1,300 umolm 2s-1	R2	96,6	R11	97,9		
v'	0,4818	delta-y	0,0065	fc	24,39	PFD-UV	0,0001 umolm 2s-1	R3	96,8	R12	84,1		
x10	0,3375	delta-u'	-0,0024	Rf	92,3	PFD-FR	0,0880 umolm 2s-1	R4	96,3	R13	96,8		
y10	0,3544	delta-v'	0,0033	Rg	98,3	S/P	2,30	R5	97,0	R14	97,3		

Spectrum



Otello 6 HD FullSpectrum + Maximum Zoom - 5.600K



CRI values, only R1-R8 are used to calculate final CRI

R1	R2	R3	R4	R5	R6	R7	R8	R9	R10	R11	R12	R13	R14	R15
97,5	96,6	96,8	96,3	97,0	95,0	94,2	94,2	92,4	93,9	97,9	84,1	96,8	97,3	96,4

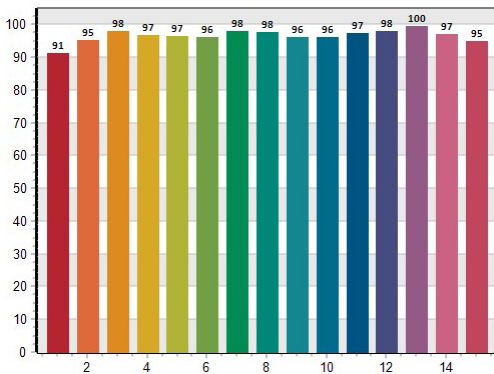
TM30 C values, 16 binned values out of total of 99 C values

C1	C2	C3	C4	C5	C6	C7	C8	C9	C10	C11	C12	C13	C14	C15	C16
92,7	97,5	94,4	90,1	89,6	93,7	91,9	89,5	90,5	91,3	90,9	89,8	88,7	91,6	83,7	93,7

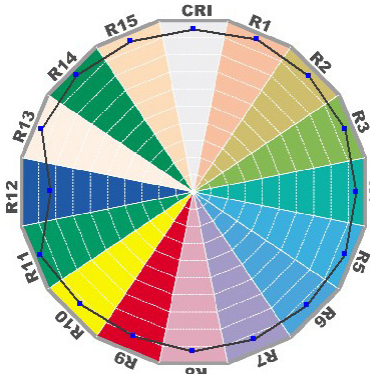
CQS Q values

Q1	Q2	Q3	Q4	Q5	Q6	Q7	Q8	Q9	Q10	Q11	Q12	Q13	Q14	Q15
91,3	95,3	97,9	96,7	96,6	96,3	98,0	97,6	96,3	96,2	97,3	98,1	99,5	97,1	94,8

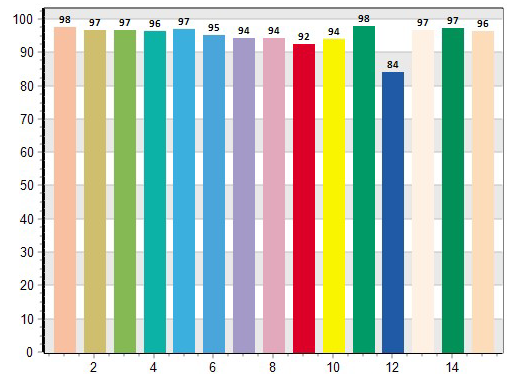
CQS: 96, 16



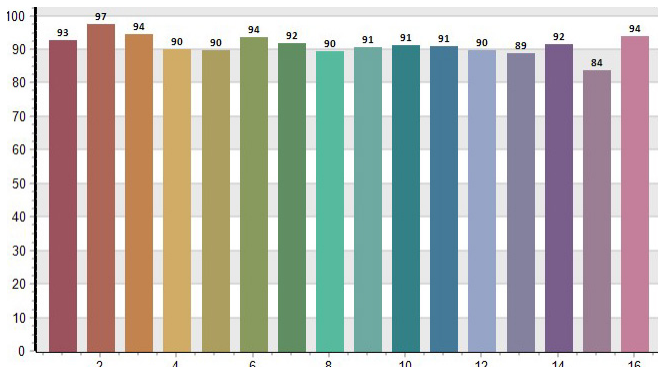
CRI-2



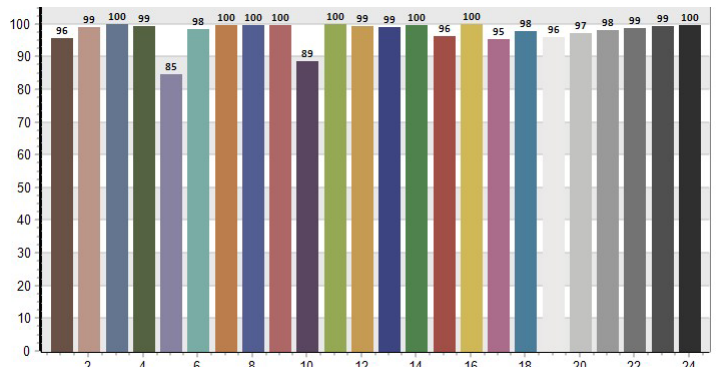
CRI: 95, 95



TM30: 92,29

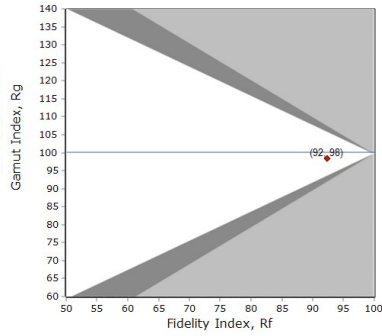
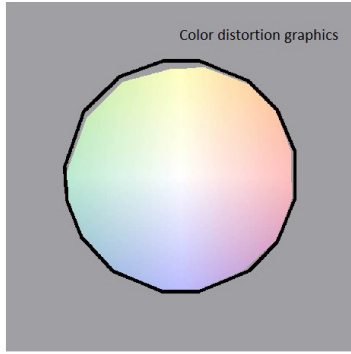
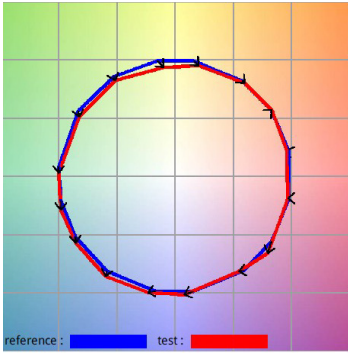


TLCI: 95, 94



Otello 6 HD FullSpectrum + Maximum Zoom - 5.600K

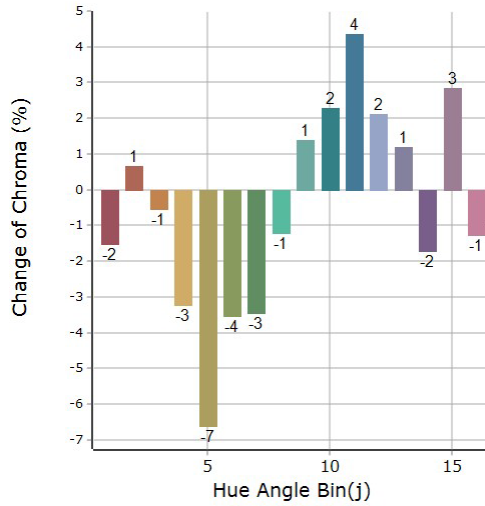
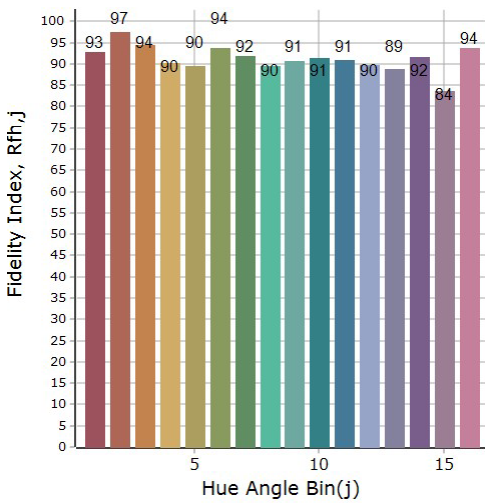
General Color Rendition



Rf
92,3
Fidelity index Rf

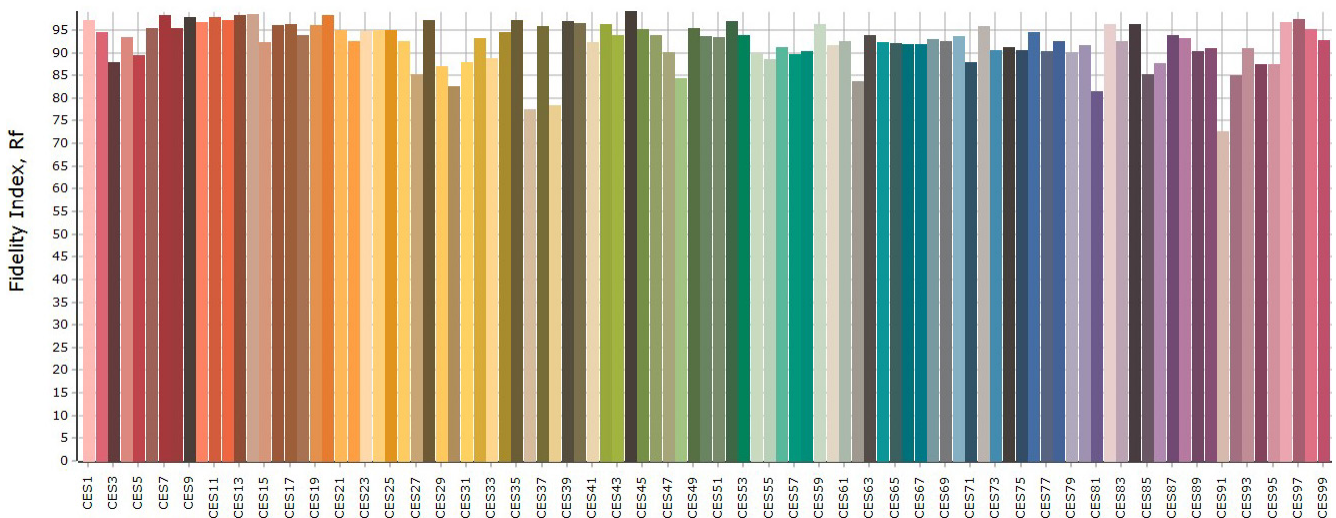
Rg
98,3
Gammut index Rg

Color Rendition by Hue



graphic shifts (%)			
Hue Bin	Rf	Chroma	Hue
1	92,7	-1,5%	1,0%
2	97,5	0,7%	0,1%
3	94,4	-0,5%	2,5%
4	90,1	-3,2%	-4,7%
5	89,6	-6,6%	-3,4%
6	93,7	-3,5%	0,6%
7	91,9%	-3,5%	0,6%
8	91,9	-3,5%	3,6%
9	90,5	1,4%	7,6%
10	91,3	2,3%	4,5%
11	90,9	4,4%	1,7%
12	89,8	2,1%	5,9%
13	88,7	1,2%	7,7%
14	91,6	-1,7%	3,8%
15	83,7	2,8%	9,4%
16	93,7	-1,3%	0,4%

Color Fidelity by Sample



● Coemar Lighting S.r.l.

Via Carpenedolo, 90
46043, Castiglione delle Stiviere (MN) – Italy

P. +39 0376 1514412

M1. info@coemar.com

M2. service@coemar.com

W. coemar.com

P.iva – C.f. 02415330204

