

LEDko FullSpectrum 6 HD-R Photometric Report

Product code:
F114U000A

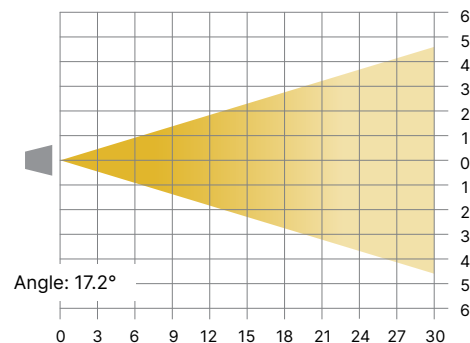
Last update:
03/05/2024

LEDko FS6 HD-R

Measurements taken with fan in AUTO mode

Optic: Lens Tube Profile 19°

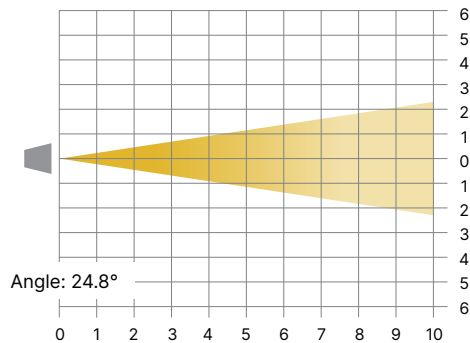
Distance (m)		3	6	9	12	15	18	21	24	27	30
lux	RED	992	248	110	62	40	28	20	15	12	10
	GREEN	2714	678	302	170	109	75	55	42	34	27
	BLUE	711	178	79	44	28	20	15	11	9	7
	CYAN	1728	432	192	108	69	48	35	27	21	17
	LIME	8781	2195	976	549	351	244	179	137	108	88
	AMBER	5392	1348	599	337	216	150	110	84	67	54
	3.200 K	13981	3495	1553	874	559	388	285	218	173	140
	5.600 K	15956	3989	1773	997	638	443	326	249	197	160



Diameter Ø (m)	0.91	1.81	2.72	3.63	4.54	5.44	6.35	7.26	8.17	9.07
----------------	------	------	------	------	------	------	------	------	------	------

Optic: Lens Tube Profile 26°

Distance (m)		1	2	3	4	5	6	7	8	9	10
lux	RED	4800	1200	533	300	192	133	89	75	59	48
	GREEN	12850	3213	1428	803	514	357	262	201	159	129
	BLUE	3400	850	378	213	136	94	69	53	42	34
	CYAN	8225	2056	914	514	329	228	168	129	102	82
	LIME	41850	10463	4650	2616	1674	1163	854	654	517	419
	AMBER	25800	6450	2867	1613	1032	717	527	403	319	258
	3.200 K	66225	16556	7358	4139	2649	1840	1352	1035	818	662
	5.600 K	75125	18781	8347	4695	3005	2087	1533	1174	927	751



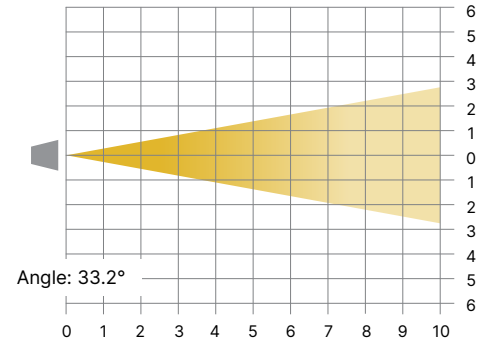
Diameter Ø (m)	0.44	0.88	1.32	1.76	2.20	2.64	3.08	3.52	3.96	4.40
----------------	------	------	------	------	------	------	------	------	------	------

LEDko FS6 HD-R

Measurements taken with fan in AUTO mode

Optic: Lens Tube Profile 36°

Distance (m)		1	2	3	4	5	6	7	8	9	10
lux	RED	2400	600	267	150	96	67	49	38	30	24
	GREEN	6525	1631	725	408	261	181	133	102	81	65
	BLUE	1775	444	197	111	71	49	36	28	22	18
	CYAN	4225	1056	469	264	169	117	86	66	52	42
	LIME	21050	5263	2339	1316	842	585	430	329	260	211
	AMBER	12950	3238	1439	809	518	360	264	202	160	130
	3.200 K	33150	8288	3683	2072	1326	921	677	518	409	332
	5.600 K	37625	9406	4181	2352	1505	1045	768	588	465	376
Diameter Ø (m)		0.60	1.19	1.79	2.38	2.98	3.58	4.17	4.77	5.37	5.96



LEDko FS6 HD-R with Lens Tube Profile 19° - 3.200K

General

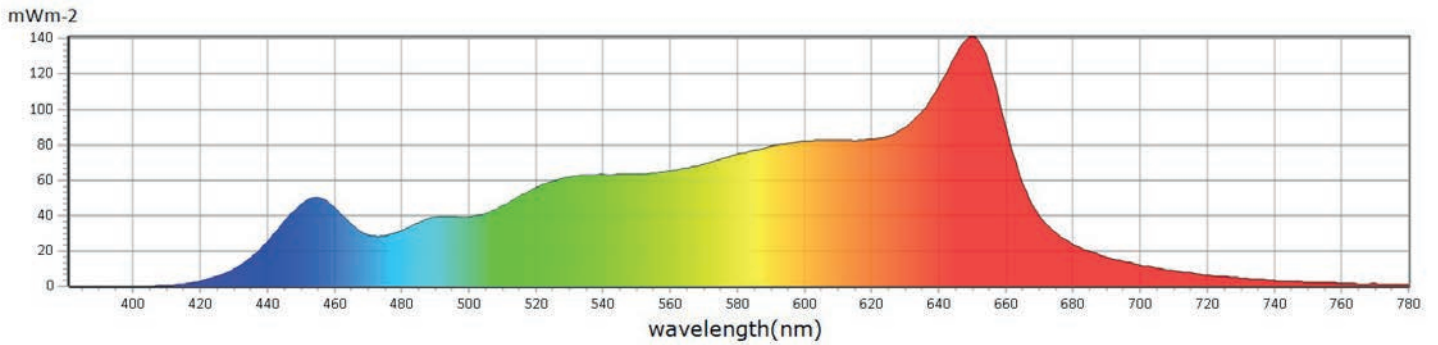
\bar{I} CCT	3231 K
\bar{I} x	0,4209
\bar{I} y	0,3972
\bar{I} LambdaD	582 mm
\bar{I} LambdaP	649 mm



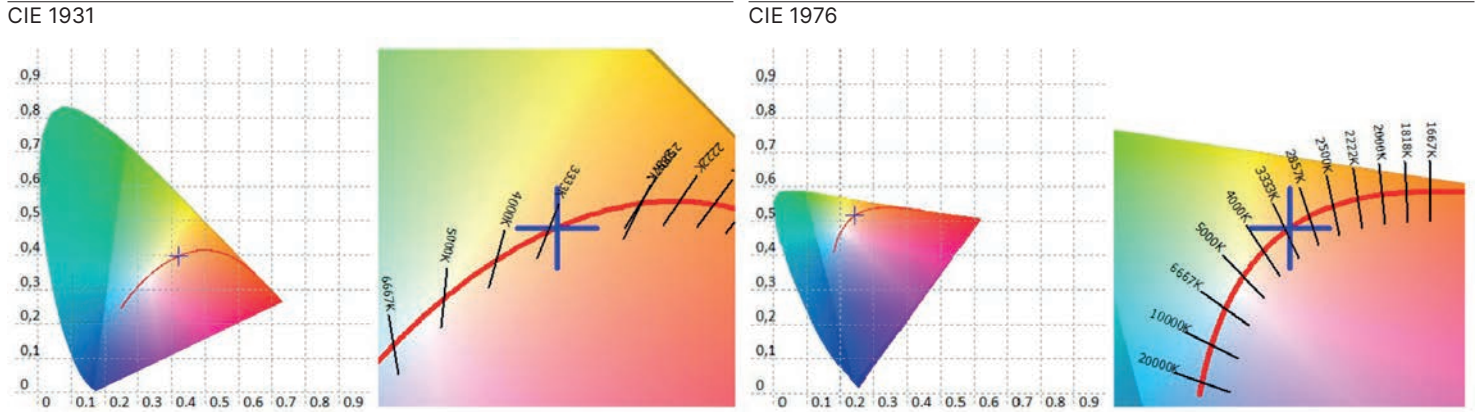
Measurements

CCT	3231 K	u'10	0,2464	Duv	-0,0003	GAI	64,8	IRR	16,49	R6	97,9	R15	99,0
LUX	4926 lx	v'10	0,5166	MEL	3051 lx	PPFD	78,10 umolm ² s ⁻¹	CQS	96,5	R7	99,4		
I-Time	200 us	X	5220,95	LambdaPV	141,4	PFD	80,16 umolm ² s ⁻¹	CRI	98,7	R8	99,4		
x	0,4209	Y	4925,96	LambdaD	582 nm	PFD-B	9,810 umolm ² s ⁻¹	TLCI	97,6	R9	98,9		
y	0,3972	Z	2255,96	LambdaP	649 nm	PFD-G	29,75 umolm ² s ⁻¹	R1	99,6	R10	97,0		
u'	0,2432	delta-x	-0,0004	Purity	45,55%	PFD-R	38,55 umolm ² s ⁻¹	R2	99,6	R11	96,6		
v'	0,5162	delta-y	-0,0010	fc	457,8	PFD-UV	0,0003 umolm ² s ⁻¹	R3	95,6	R12	87,4		
x10	0,4254	delta-u'	0,0001	Rf	95,7	PFD-FR	2,058 umolm ² s ⁻¹	R4	98,6	R13	99,7		
y10	0,3964	delta-v'	-0,0005	Rg	101,2	S/P	1,56	R5	99,5	R14	96,2		

Spectrum



LEDko FS6 HD-R with Lens Tube Profile 19° - 3.200K



CRI values, only R1-R8 are used to calculate final CRI

R1	R2	R3	R4	R5	R6	R7	R8	R9	R10	R11	R12	R13	R14	R15
99,6	99,6	95,6	98,6	99,5	97,9	99,4	99,4	98,9	97,0	96,6	87,4	99,7	96,2	99,0

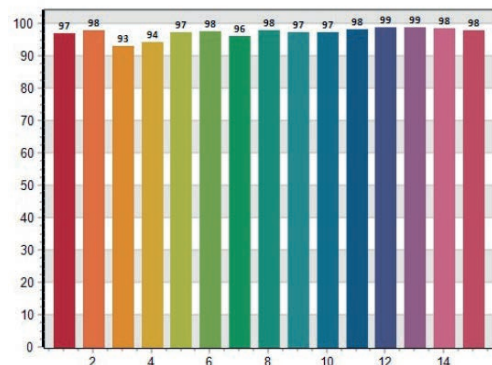
TM30 C values, 16 binned values out of total of 99 C values

C1	C2	C3	C4	C5	C6	C7	C8	C9	C10	C11	C12	C13	C14	C15	C16
97,0	98,4	90,9	90,4	94,4	97,0	95,1	98,0	95,0	92,7	92,0	92,4	90,1	93,9	93,4	90,5

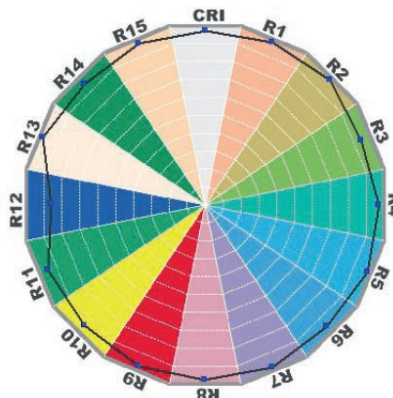
CQS Q values

Q1	Q2	Q3	Q4	Q5	Q6	Q7	Q8	Q9	Q10	Q11	Q12	Q13	Q14	Q15
96,8	97,8	93,0	94,1	97,3	97,5	96,0	97,8	97,2	97,1	98,0	98,6	98,7	98,3	97,7

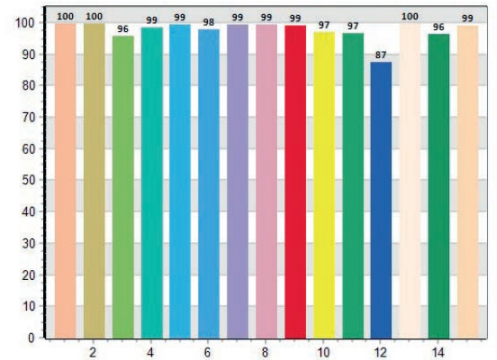
CQS: 96, 47



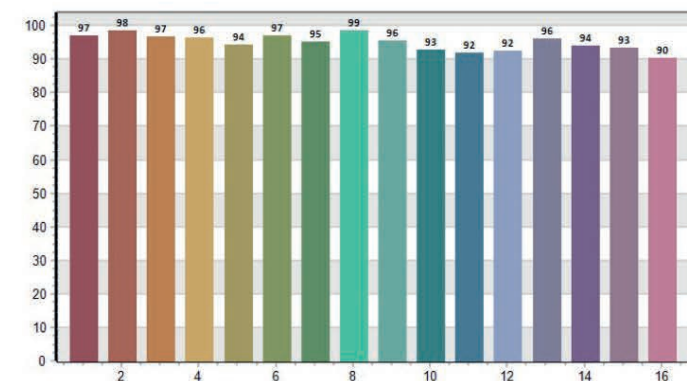
CRI-2



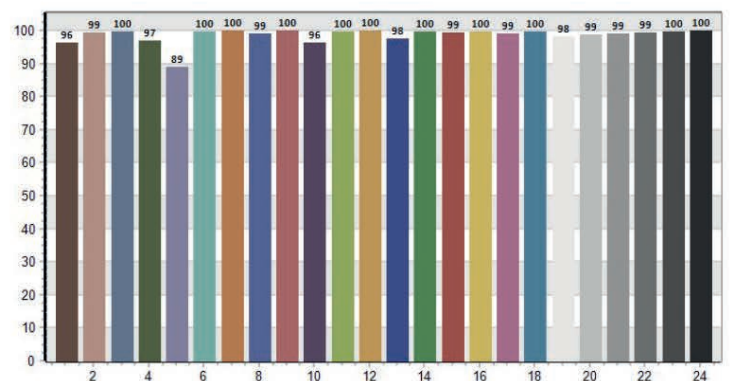
CRI: 98, 70



TM30: 95, 66

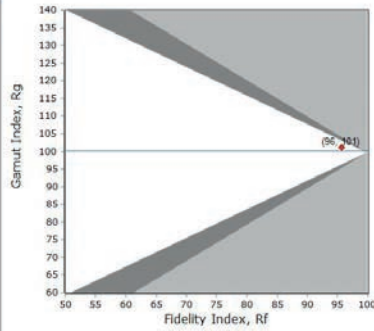
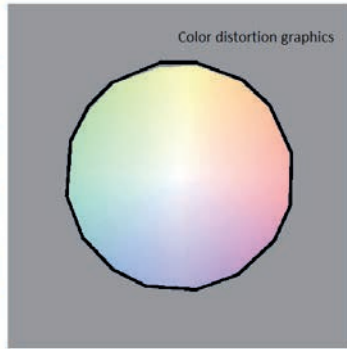
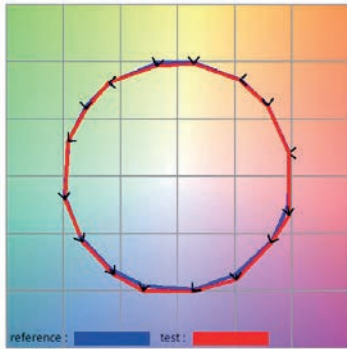


TLCI: 97, 60



LEDko FS6 HD-R with Lens Tube Profile 19° - 3.200K

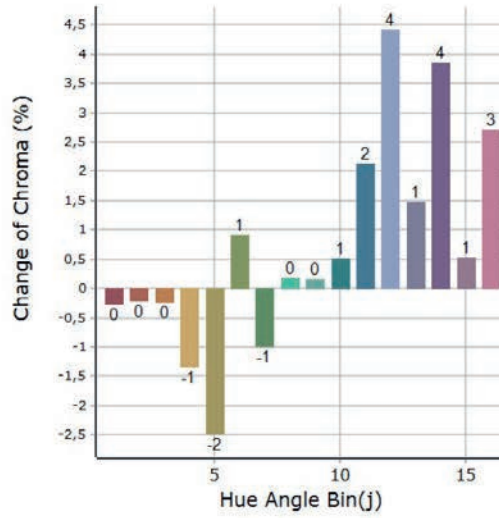
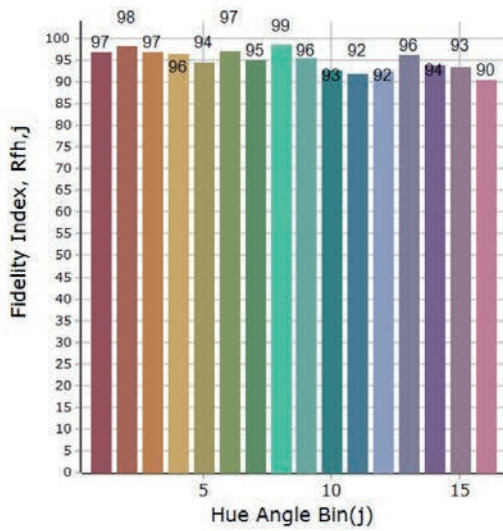
General Color Rendition



Rf
95,7
Fidelity index Rf

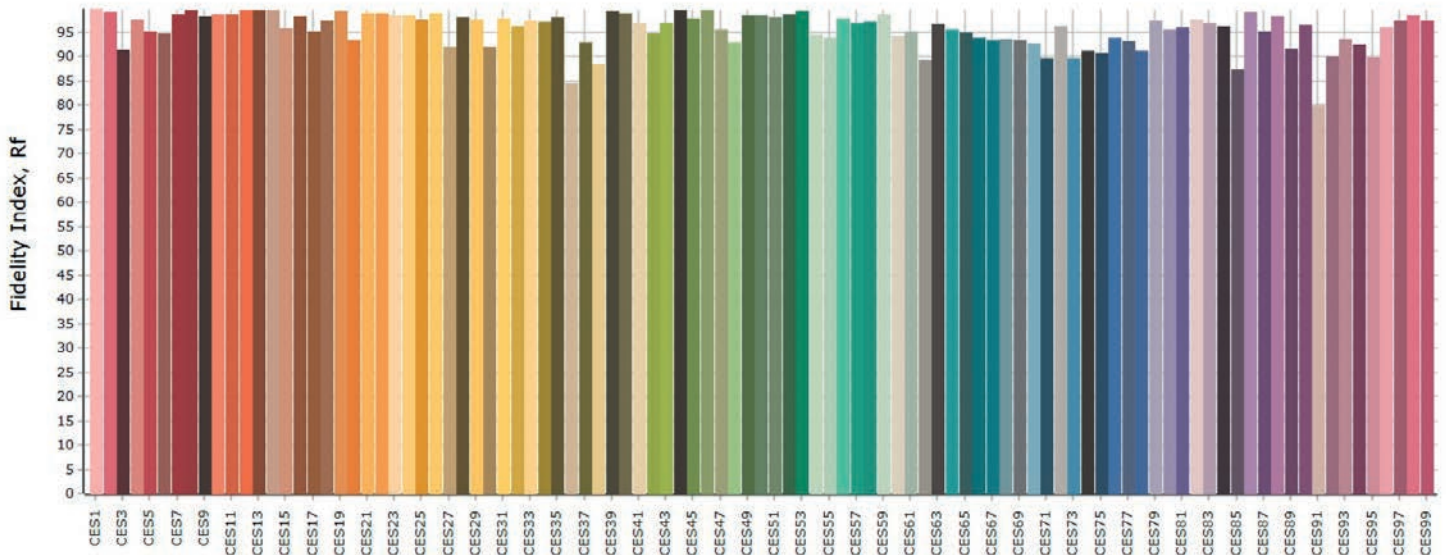
Rg
101,2
Gammut index Rg

Color Rendition by Hue



Hue Bin	Graphic shifts (%)		
	Rf	Chroma	Hue
1	97,0	-0,3%	-0,1%
2	98,4	-0,2%	-0,2%
3	96,9	-0,2%	0,6%
4	96,4	-1,3%	-0,2%
5	94,4	-2,5%	1,0%
6	97,0	0,9%	1,0%
7	95,1	-1,0%	1,5%
8	98,6	0,2%	0,4%
9	95,6	0,2%	2,8%
10	92,7	0,5%	3,8%
11	92,0	2,1%	4,4%
12	92,4	4,4%	0,4%
13	96,1	1,5%	-1,8%
14	93,9	3,9%	-2,1%
15	93,4	0,5%	-2,1%
16	90,5	2,7%	-6,4%

Color Fidelity by Sample



LEDko FS6 HD-R with Lens Tube Profile 19° - 5.600K

General

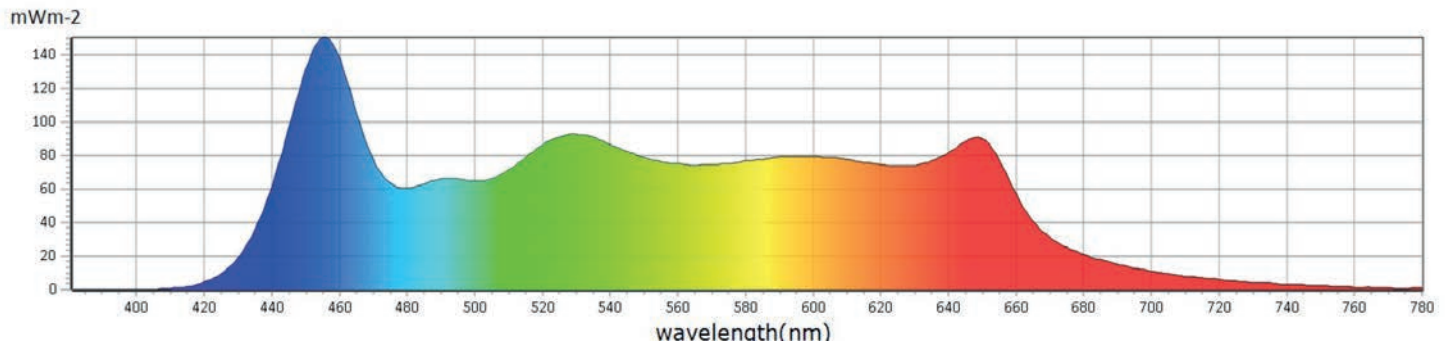
I_{CCT}	5675 K
I_x	0,3286
I_y	0,3370
$I_{\lambda D}$	502 mm
$I_{\lambda P}$	455 mm



Measurements

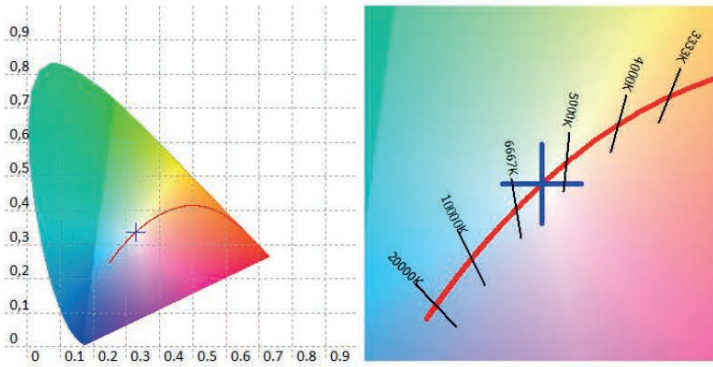
CCT	5675 K	u'10	0,2067	Duv	-0,0004	GAI	96,3	IRR	19,86	R6	94,8	R15	96,1
LUX	5745 lx	v'10	0,4771	MEL	5732 lx	PPFD	89,61 umolm 2s-1	CQS	95,0	R7	98,4		
I-Time	1400 us	X	5601,58	LambdaPV	150,4	PFD	91,53 umolm 2s-1	CRI	97,4	R8	98,8		
x	0,3286	Y	5744,95	LambdaD	502 nm	PFD-B	23,12 umolm 2s-1	TLCI	97,4	R9	97,5		
y	0,3370	Z	5701,72	LambdaP	455 nm	PFD-G	36,50 umolm 2s-1	R1	97,1	R10	97,4		
u'	0,2058	delta-x	0,0000	Purity	1,45%	PFD-R	29,99 umolm 2s-1	R2	98,6	R11	95,4		
v'	0,4749	delta-y	-0,0007	fc	533,9	PFD-UV	0,0024 umolm 2s-1	R3	95,5	R12	75,9		
x10	0,3318	delta-u'	0,0003	Rf	92,9	PFD-FR	1,915 umolm 2s-1	R4	98,6	R13	97,2		
y10	0,3405	delta-v'	-0,0004	Rg	100,9	S/P	2,27	R5	97,3	R14	96,7		

Spectrum

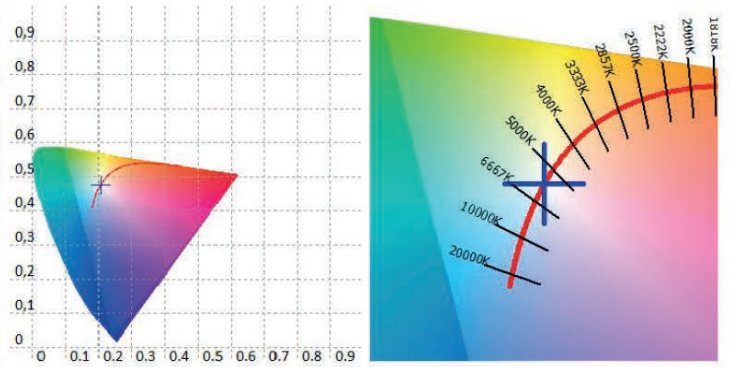


LEDko FS6 HD-R with Lens Tube Profile 19° - 5.600K

CIE 1931



CIE 1976



CRI values, only R1-R8 are used to calculate final CRI

R1	R2	R3	R4	R5	R6	R7	R8	R9	R10	R11	R12	R13	R14	R15
97,1	98,6	95,5	98,6	97,3	94,8	98,4	98,8	97,5	97,4	95,4	75,9	97,2	96,7	96,1

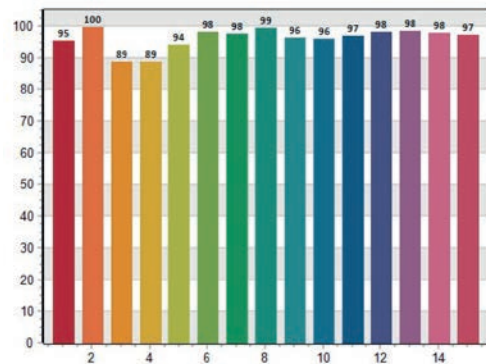
TM30 C values, 16 binned values out of total of 99 C values

C1	C2	C3	C4	C5	C6	C7	C8	C9	C10	C11	C12	C13	C14	C15	C16
93,6	96,7	95,2	93,3	91,0	96,0	95,3	91,9	89,9	86,6	84,9	95,3	95,9	94,1	84,2	96,5

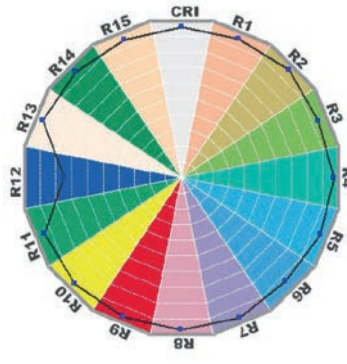
CQS Q values

Q1	Q2	Q3	Q4	Q5	Q6	Q7	Q8	Q9	Q10	Q11	Q12	Q13	Q14	Q15
95,5	99,6	88,7	88,7	94,1	98,0	97,6	99,4	96,4	96,1	97,0	98,0	98,3	97,9	97,2

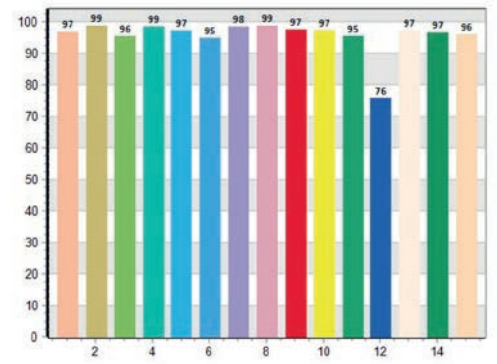
CQS: 94, 98



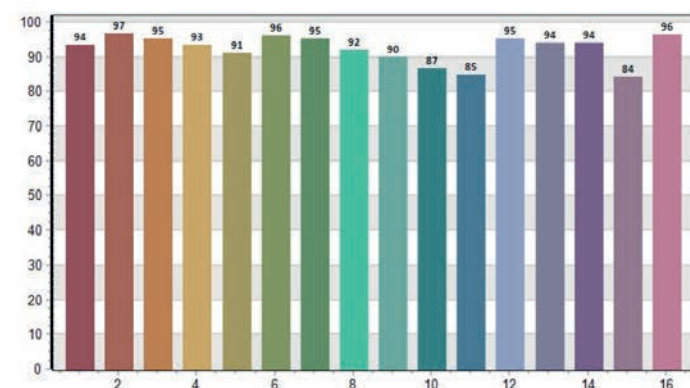
CRI-2



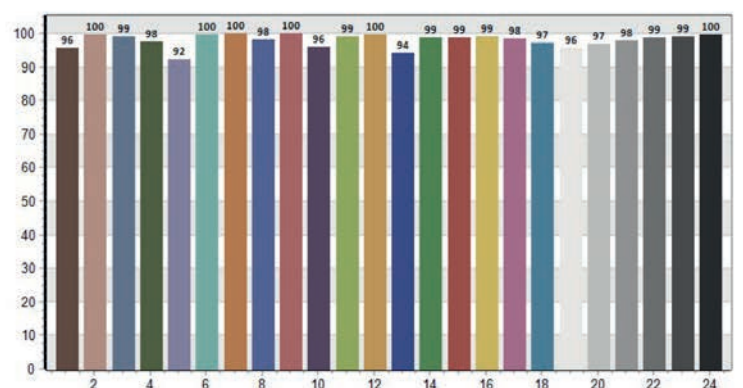
CRI: 97, 39



TM30: 95, 66

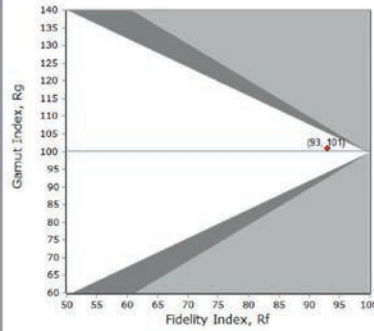
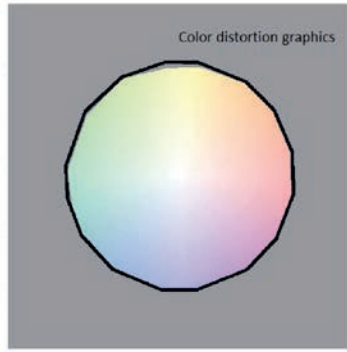
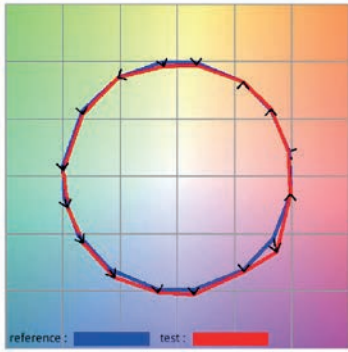


TLCI: 97, 60



LEDko FS6 HD-R with Lens Tube Profile 19° - 5.600K

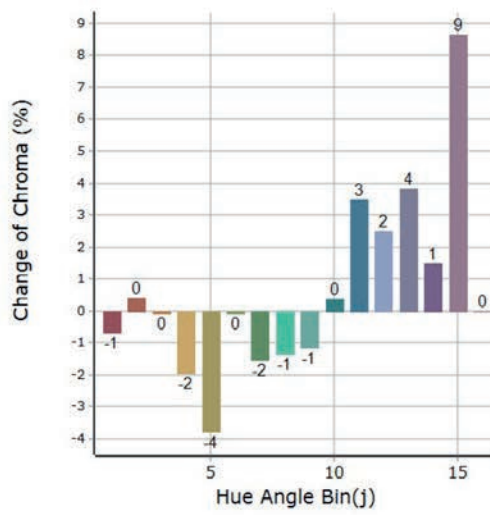
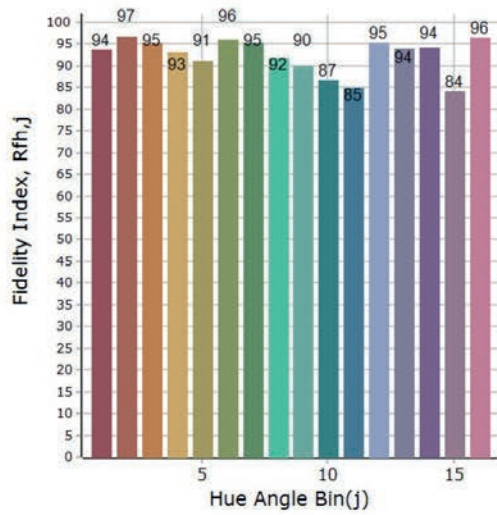
General Color Rendition



Rf
92,9
Fidelity index Rf

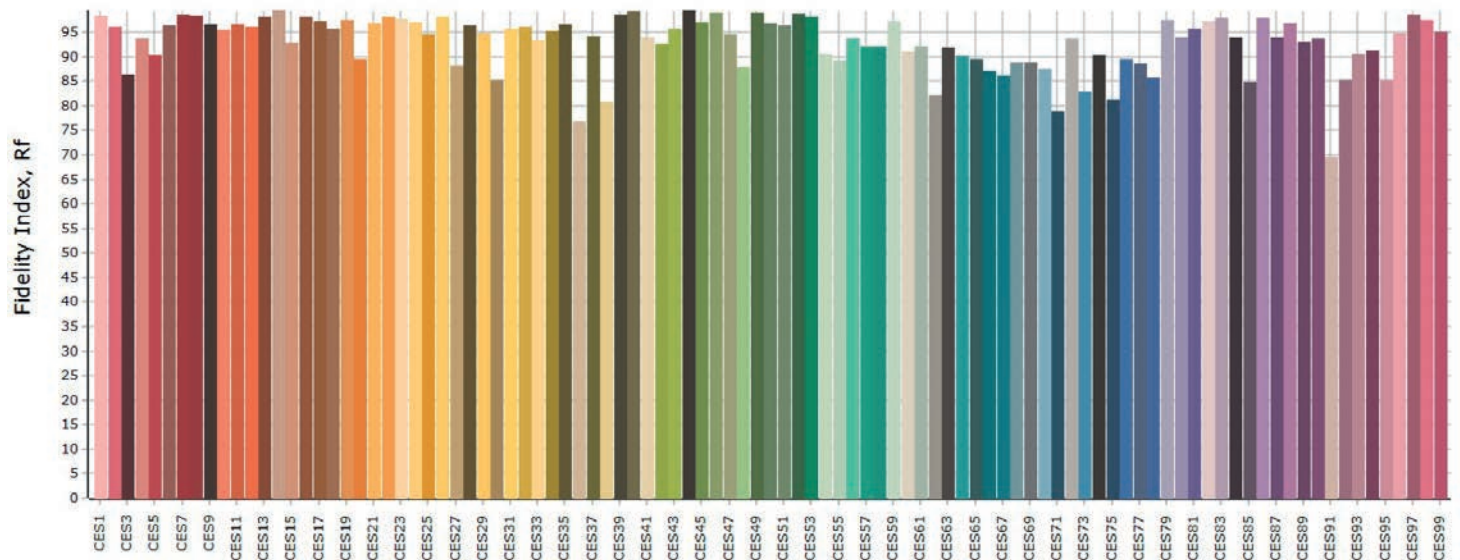
Rg
100,9
Gammut index Rg

Color Rendition by Hue



Hue Bin	Rf	Graphic shifts (%)	
		Chroma	Hue
1	93,6	-0,7%	0,6%
2	96,7	0,4%	0,8%
3	95,2	-0,1%	0,2%
4	93,3	-1,9%	-0,6%
5	91,0	-3,8%	-0,3%
6	96,0	-0,1%	1,0%
7	95,3	-1,5%	1,8%
8	91,9	-1,3%	4,3%
9	89,9	-1,1%	8,2%
10	86,6	0,4%	7,6%
11	84,9	3,5%	7,5%
12	95,3	2,5%	0,9%
13	93,9	3,8%	-0,5%
14	94,1	1,5%	-1,0%
15	84,2	8,6%	-7,3%
16	96,5	0,0%	0,3%

Color Fidelity by Sample



LEDko FS6 HD-R with Lens Tube Profile 26° - 3.200K

General

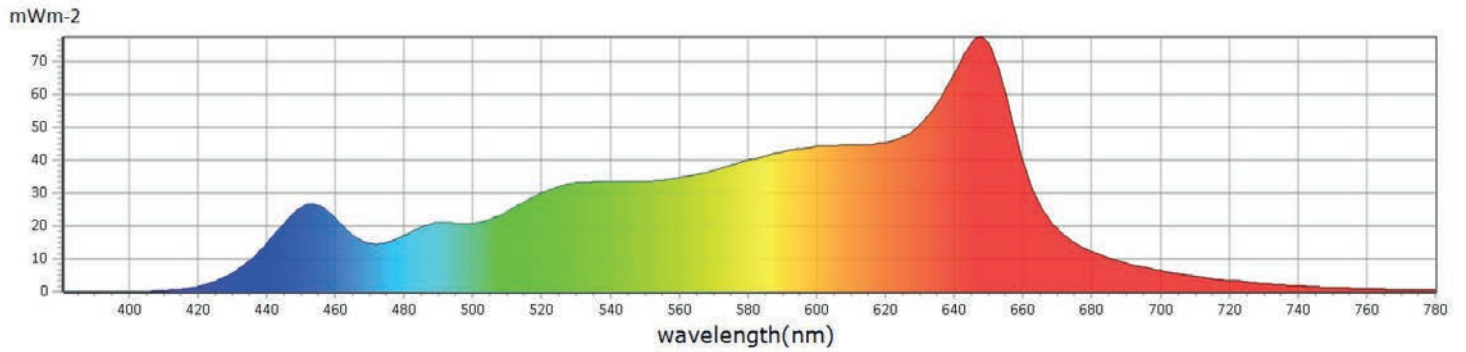
I_{CCT}	3186 K
I_x	0,4227
I_y	0,3959
$I_{\lambda D}$	583 nm
$I_{\lambda P}$	647 nm



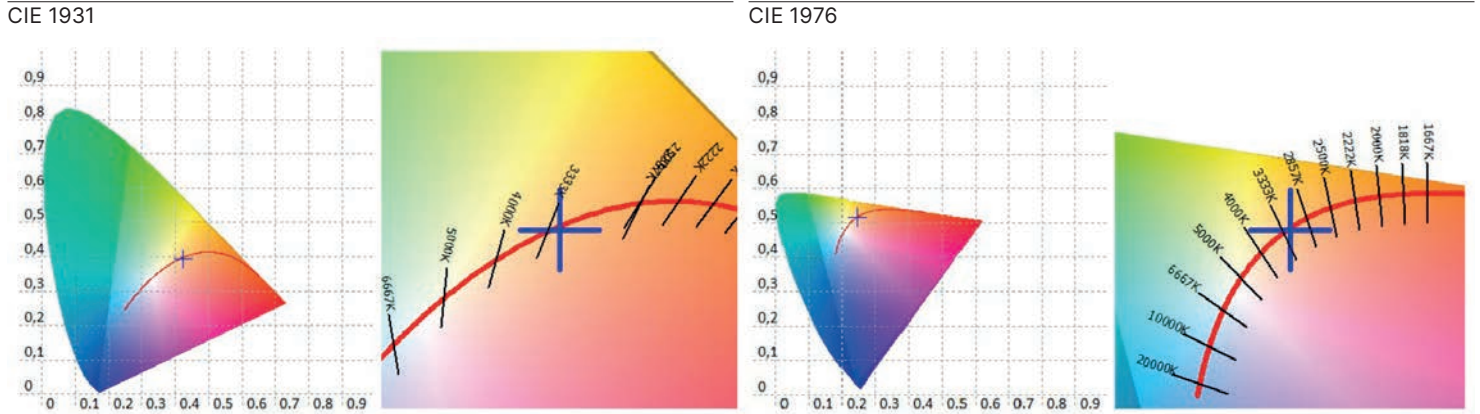
Measurements

CCT	3186 K	u'10	0,2479	Duv	-0,0012	GAI	65,4	IRR	8,825	R6	97,7	R15	99,0
LUX	2649 lx	v'10	0,5163	MEL	1630 lx	PPFD	41,77 umolm ² s ⁻¹	CQS	96,5	R7	99,0		
I-Time	3600 us	X	2828,30	LambdaPV	77,60	PFD	42,87 umolm ² s ⁻¹	CRI	98,2	R8	98,6		
x	0,4227	Y	2649,05	LambdaD	583 nm	PFD-B	5,266 umolm ² s ⁻¹	TLCI	96,9	R9	97,0		
y	0,3959	Z	1213,35	LambdaP	647 nm	PFD-G	15,93 umolm ² s ⁻¹	R1	98,9	R10	98,2		
u'	0,2449	delta-x	-0,0016	Purity	45,55 %	PFD-R	20,57 umolm ² s ⁻¹	R2	99,4	R11	95,0		
v'	0,5160	delta-y	-0,0034	fc	246,2	PFD-UV	0,0002 umolm ² s ⁻¹	R3	95,7	R12	89,8		
x10	0,4269	delta-u'	0,0004	Rf	96,0	PFD-FR	1,104 umolm ² s ⁻¹	R4	97,2	R13	98,8		
y10	0,3951	delta-v'	-0,0016	Rg	102,0	S/P	1,55	R5	99,0	R14	96,2		

Spectrum



LEDko FS6 HD-R with Lens Tube Profile 26° - 3.200K



CRI values, only R1-R8 are used to calculate final CRI

R1	R2	R3	R4	R5	R6	R7	R8	R9	R10	R11	R12	R13	R14	R15
98,9	99,4	95,7	97,2	99,0	97,7	99,0	98,6	97,0	98,2	95,0	89,8	98,8	96,2	99,0

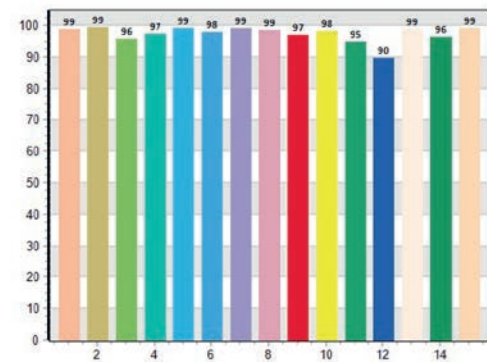
TM30 C values, 16 binned values out of total of 99 C values

C1	C2	C3	C4	C5	C6	C7	C8	C9	C10	C11	C12	C13	C14	C15	C16
97,1	98,5	96,9	97,4	95,0	96,0	95,5	98,0	97,0	94,7	93,3	92,2	95,3	93,9	93,8	90,6

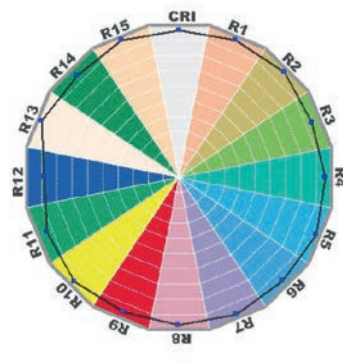
CQS Q values

Q1	Q2	Q3	Q4	Q5	Q6	Q7	Q8	Q9	Q10	Q11	Q12	Q13	Q14	Q15
97,7	97,6	93,3	95,1	98,4	96,1	95,3	97,6	97,2	96,9	97,9	98,5	98,6	97,9	97,9

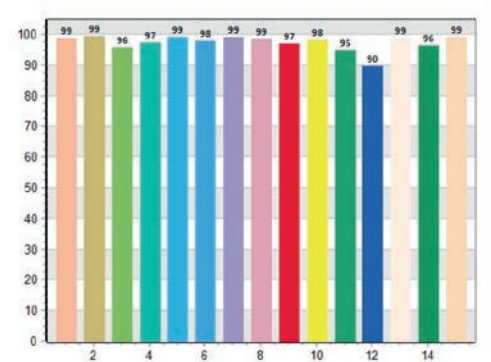
CQS: 96, 51



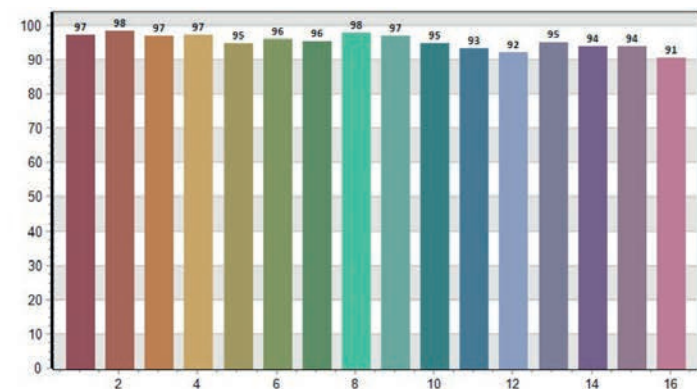
CRI-2



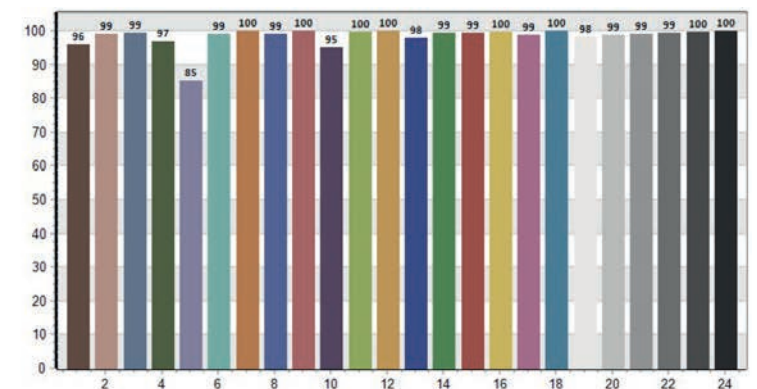
CRI: 98, 18



TM30: 96, 02

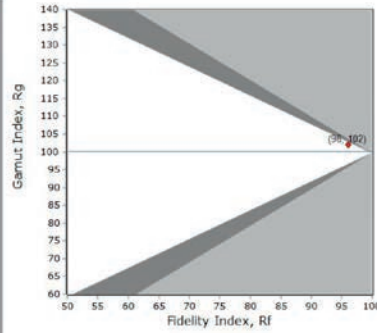
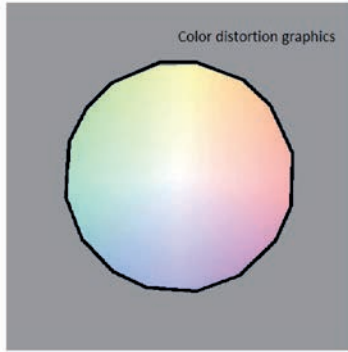
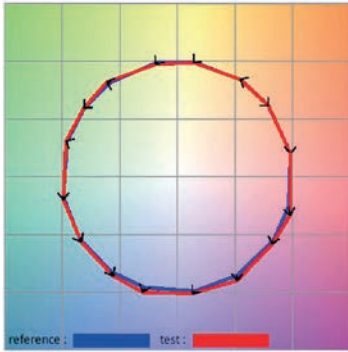


TLCI: 96, 94



LEDko FS6 HD-R with Lens Tube Profile 26° - 3.200K

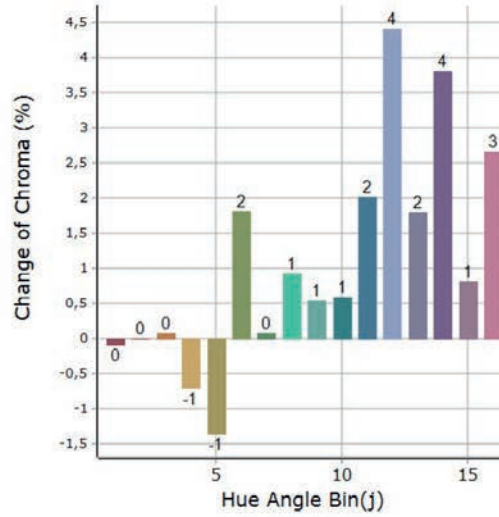
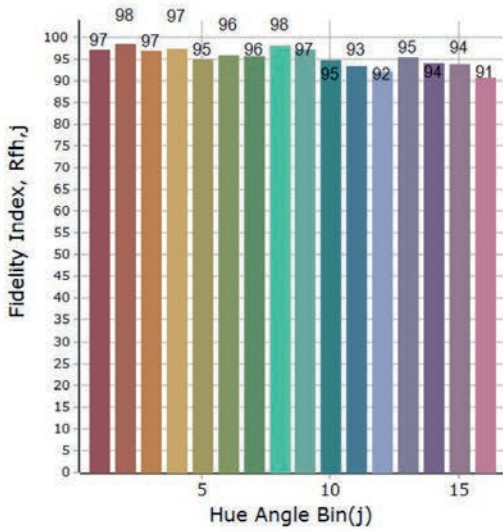
General Color Rendition



Rf
96,0
Fidelity index Rf

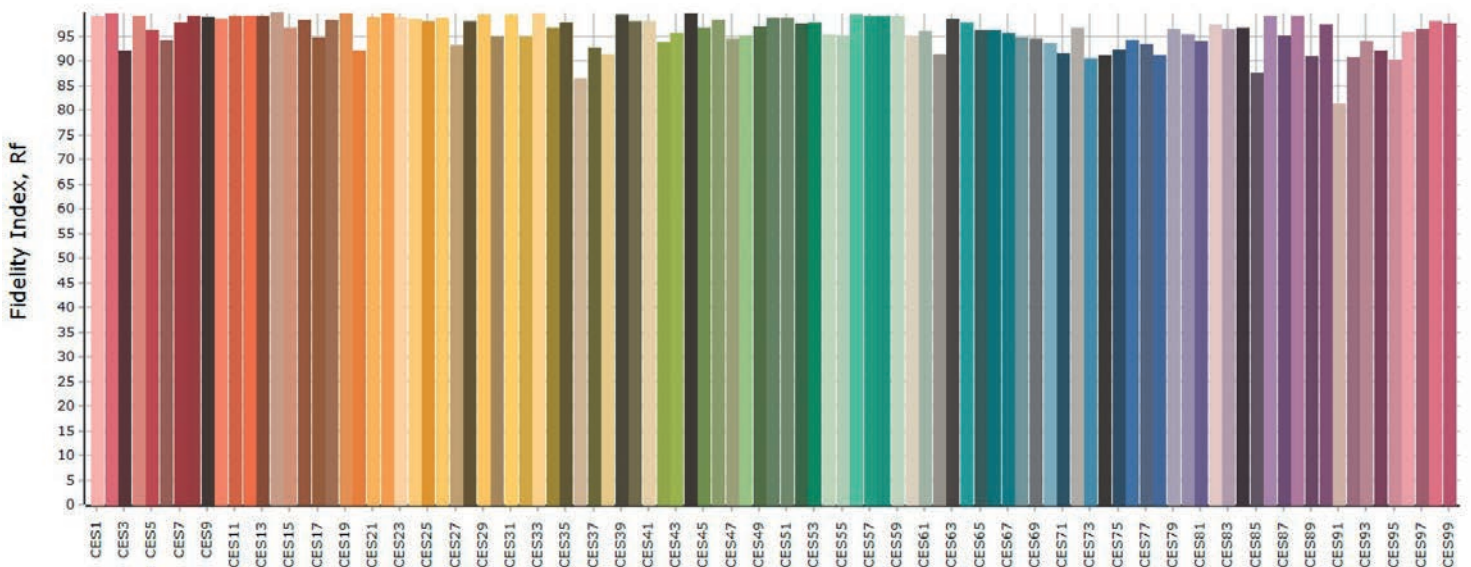
Rg
102,0
Gammut index Rg

Color Rendition by Hue



		Graphic shifts (%)		
Hue Bin	Rf	Chroma	Hue	
1	97,1	-0,1%	-0,3%	
2	98,5	0,0%	-0,1%	
3	96,9	0,1%	0,8%	
4	97,4	-0,7%	0,1%	
5	95,0	-1,4%	1,3%	
6	96,0	1,8%	1,1%	
7	95,5	0,1%	1,0%	
8	98,0	0,9%	-0,1%	
9	97,0	0,5%	1,8%	
10	94,7	0,6%	2,6%	
11	93,3	2,0%	3,6%	
12	92,2	4,4%	-0,4%	
13	95,3	1,8%	-2,4%	
14	93,9	3,8%	-2,3%	
15	93,8	0,8%	-2,3%	
16	90,6	2,7%	-6,2%	

Color Fidelity by Sample



LEDko FS6 HD-R with Lens Tube Profile 26° - 5.600K

General

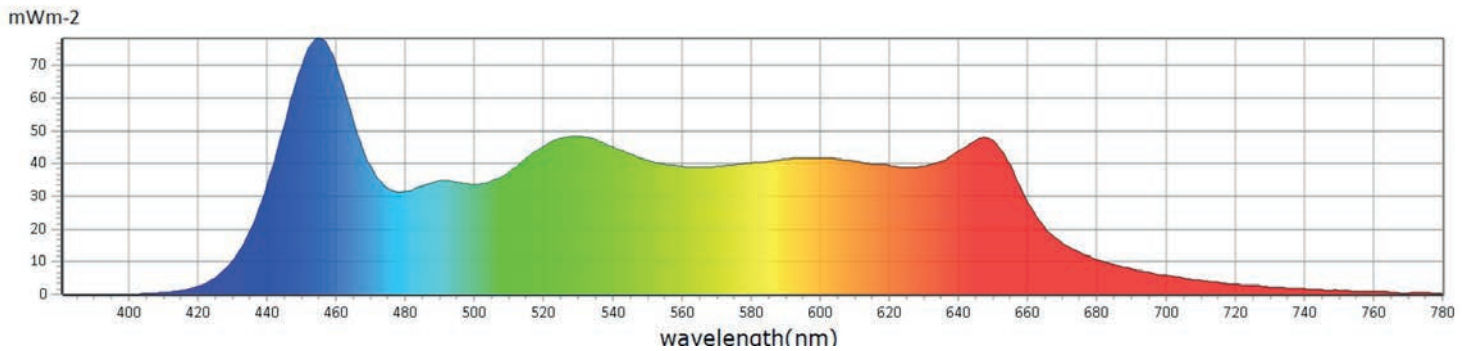
I_{CCT}	5641 K
I_x	0,3293
I_y	0,3370
$I_{\lambda D}$	504 mm
$I_{\lambda P}$	454 mm



Measurements

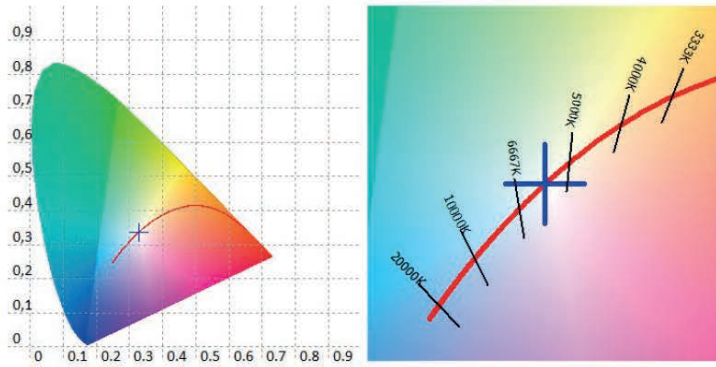
CCT	5641 K	u'10	0,2072	Duv	-0,0007	GAI	96,6	IRR	10,38	R6	97,7	R15	96,3
LUX	3005 lx	v'10	0,4771	MEL	2985 lx	PPFD	46,80 umolm ² s ⁻¹	CQS	95,1	R7	98,5		
I-Time	2400 us	X	2936,71	LambdaPV	78,33	PFD	47,82 umolm ² s ⁻¹	CRI	97,3	R8	99,1		
x	0,3293	Y	3005,30	LambdaD	504 nm	PFD-B	12,06 umolm ² s ⁻¹	TLCI	97,3	R9	97,4		
y	0,3370	Z	2976,11	LambdaP	454 nm	PFD-G	19,09 umolm ² s ⁻¹	R1	97,0	R10	97,2		
u'	0,2063	delta-x	0,0000	Purity	1,22 %	PFD-R	15,64 umolm ² s ⁻¹	R2	98,6	R11	94,8		
v'	0,4750	delta-y	-0,0013	fc	279,3	PFD-UV	0,0026 umolm ² s ⁻¹	R3	95,4	R12	76,7		
x10	0,3325	delta-u'	0,0005	Rf	93,1	PFD-FR	1,022 umolm ² s ⁻¹	R4	98,0	R13	97,1		
y10	0,3403	delta-v'	-0,0007	Rg	101,2	S/P	2,26	R5	97,4	R14	96,6		

Spectrum

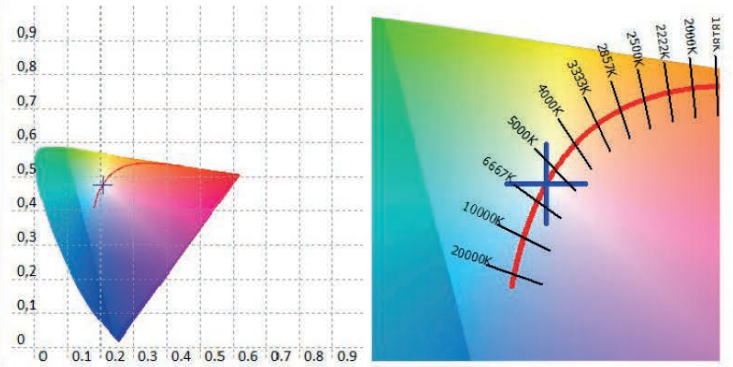


LEDko FS6 HD-R with Lens Tube Profile 26° - 5.600K

CIE 1931



CIE 1976



CRI values, only R1-R8 are used to calculate final CRI

R1	R2	R3	R4	R5	R6	R7	R8	R9	R10	R11	R12	R13	R14	R15
97,0	98,6	95,4	98,0	97,4	94,8	98,4	99,1	97,4	97,2	94,8	76,7	97,1	96,6	96,3

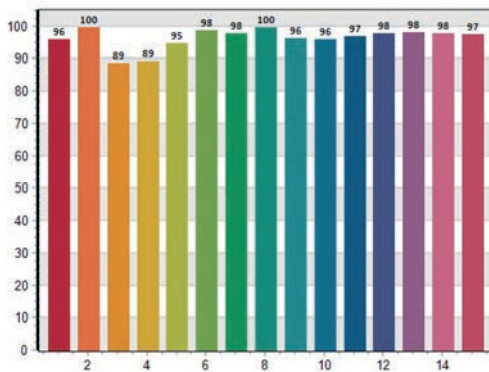
TM30 C values, 16 binned values out of total of 99 C values

C1	C2	C3	C4	C5	C6	C7	C8	C9	C10	C11	C12	C13	C14	C15	C16
93,8	96,7	95,2	93,6	91,4	96,0	95,5	92,5	90,5	87,2	85,0	95,1	93,9	94,0	84,5	96,6

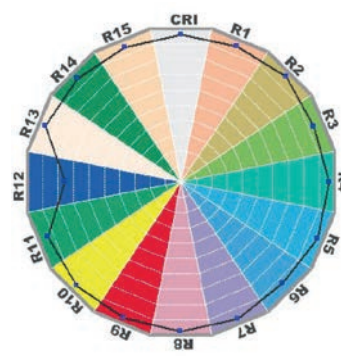
CQS Q values

Q1	Q2	Q3	Q4	Q5	Q6	Q7	Q8	Q9	Q10	Q11	Q12	Q13	Q14	Q15
96,0	99,6	88,6	89,0	94,6	98,5	97,6	99,5	96,3	95,9	96,9	97,8	98,1	97,8	97,4

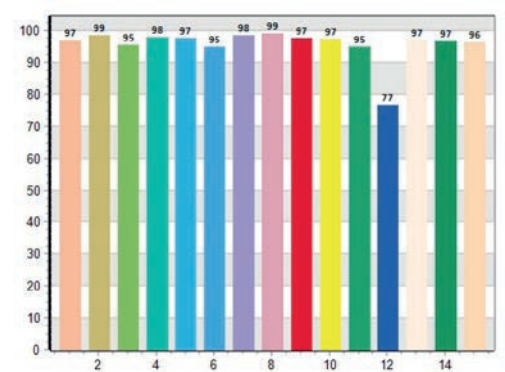
CQS: 95, 06



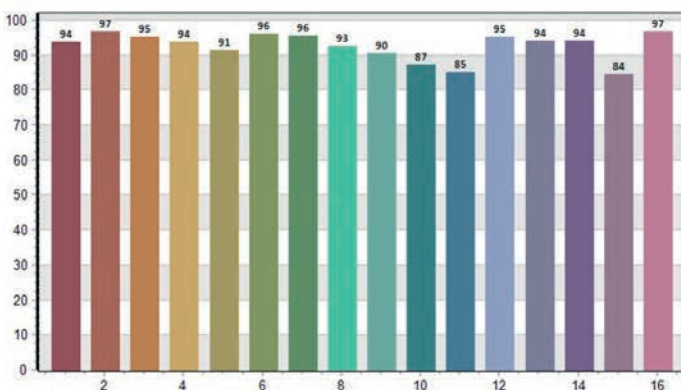
CRI-2



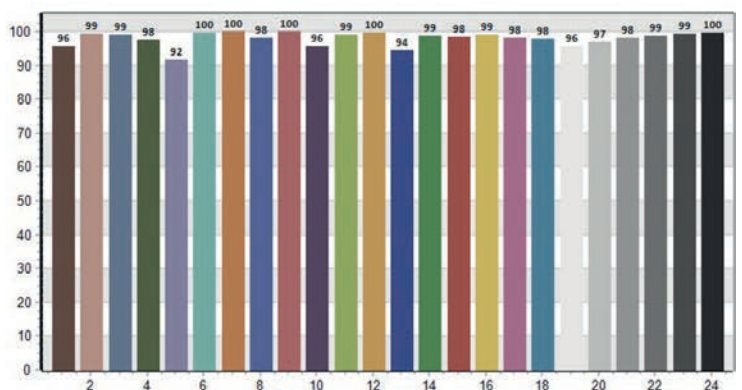
CRI: 97, 34



TM30: 93, 13

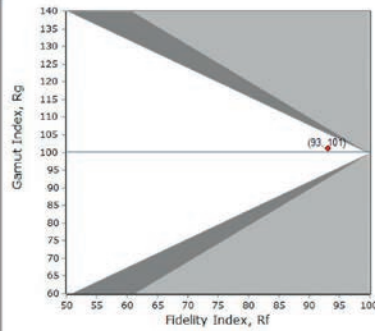
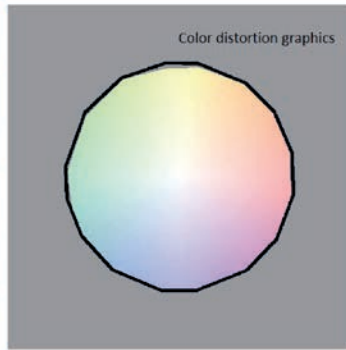
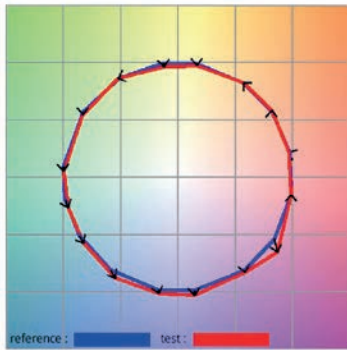


TLCI: 97, 33



LEDko FS6 HD-R with Lens Tube Profile 26° - 5.600K

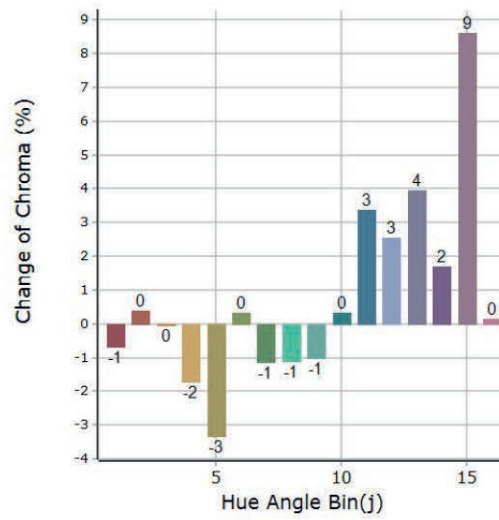
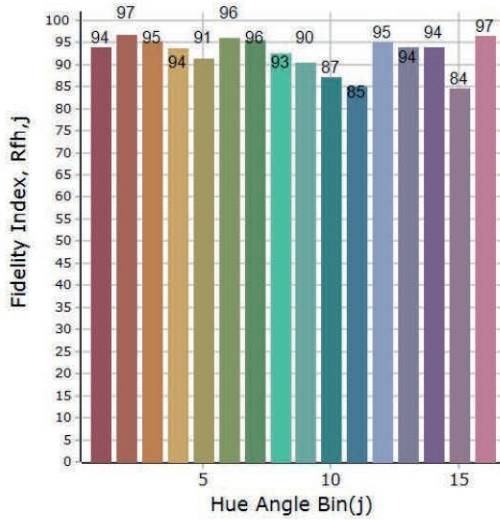
General Color Rendition



Rf
93,1
Fidelity index Rf

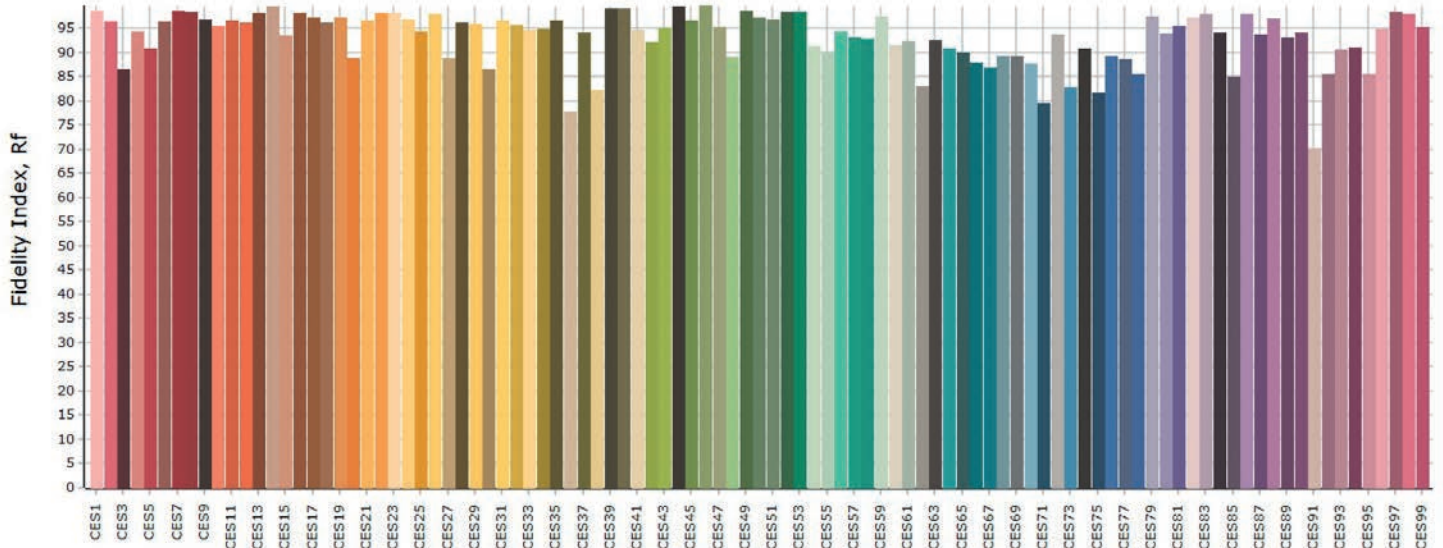
Rg
101,2
Gammut index Rg

Color Rendition by Hue



Hue Bin	Rf	Graphic shifts (%)	
		Chroma	Hue
1	93,8	-0,7%	0,5%
2	96,7	0,4%	0,9%
3	95,2	0,0%	0,4%
4	93,6	-1,7%	-0,3%
5	91,4	-3,3%	0,0%
6	96,0	0,3%	1,2%
7	95,5	-1,1%	1,7%
8	92,5	-1,1%	3,9%
9	90,5	-1,0%	7,6%
10	87,2	0,3%	7,3%
11	85,0	3,4%	7,4%
12	95,1	2,5%	1,1%
13	93,9	4,0%	-0,4%
14	94,0	1,7%	-0,9%
15	84,5	8,6%	-7,2%
16	96,6	0,1%	0,2%

Color Fidelity by Sample



LEDko FS6 HD-R with Lens Tube Profile 36° - 3.200K

General

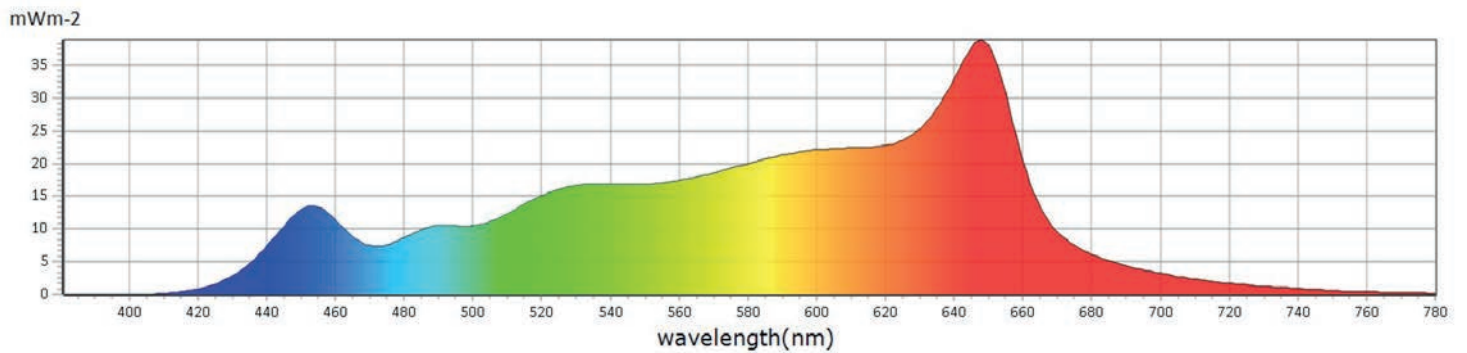
I_{CCT}	3197 K
I_x	0,4220
I_y	0,3955
$I_{\lambda D}$	582 nm
$I_{\lambda P}$	647 nm



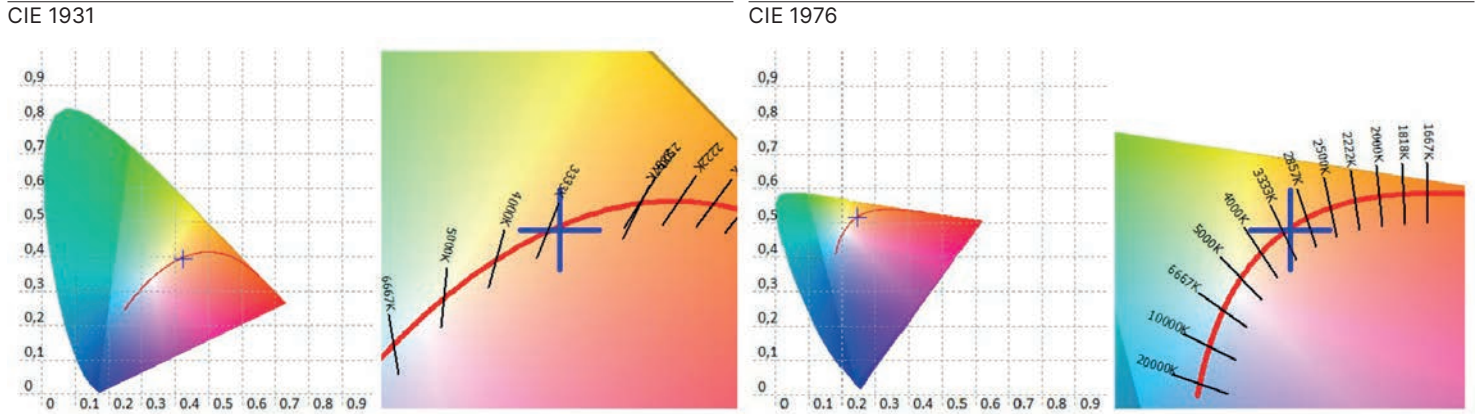
Measurements

CCT	3197 K	u'10	0,2476	Duv	-0,0012	GAI	65,7	IRR	4,426	R6	97,7	R15	98,9
LUX	1327 lx	v'10	0,5160	MEL	820,5 lx	PPFD	20,94 $\mu\text{molm}^{-2}\text{s}^{-1}$	CQS	96,5	R7	99,1		
I-Time	8400 μs	X	1415,53	LambdaPV	38,91	PFD	21,49 $\mu\text{molm}^{-2}\text{s}^{-1}$	CRI	98,2	R8	98,4		
x	0,4220	Y	1326,84	LambdaD	582 nm	PFD-B	2,657 $\mu\text{molm}^{-2}\text{s}^{-1}$	TLCI	97,0	R9	96,5		
y	0,3955	Z	612,30	LambdaP	647 nm	PFD-G	7,981 $\mu\text{molm}^{-2}\text{s}^{-1}$	R1	98,8	R10	98,4		
u'	0,2445	delta-x	-0,0016	Purity	45,50 %	PFD-R	10,31 $\mu\text{molm}^{-2}\text{s}^{-1}$	R2	99,4	R11	94,9		
v'	0,5157	delta-y	-0,0035	fc	123,3	PFD-UV	0,0000 $\mu\text{molm}^{-2}\text{s}^{-1}$	R3	95,8	R12	89,6		
x10	0,4261	delta-u'	0,0005	Rf	96,0	PFD-FR	0,5485 $\mu\text{molm}^{-2}\text{s}^{-1}$	R4	97,2	R13	98,7		
y10	0,3948	delta-v'	-0,0017	Rg	102,0	S/P	1,56	R5	98,9	R14	96,3		

Spectrum



LEDko FS6 HD-R with Lens Tube Profile 36° - 3.200K



CRI values, only R1-R8 are used to calculate final CRI

R1	R2	R3	R4	R5	R6	R7	R8	R9	R10	R11	R12	R13	R14	R15
98,8	99,4	95,8	97,2	98,9	97,7	99,1	98,4	96,5	98,4	94,9	89,6	98,7	96,3	98,9

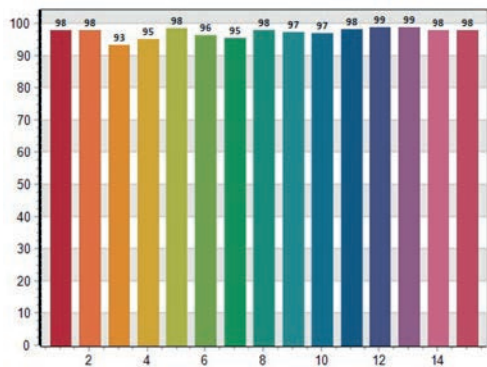
TM30 C values, 16 binned values out of total of 99 C values

C1	C2	C3	C4	C5	C6	C7	C8	C9	C10	C11	C12	C13	C14	C15	C16
97,1	98,5	96,9	97,3	94,9	96,0	95,4	98,0	96,8	94,6	93,2	92,2	95,4	93,9	93,8	90,6

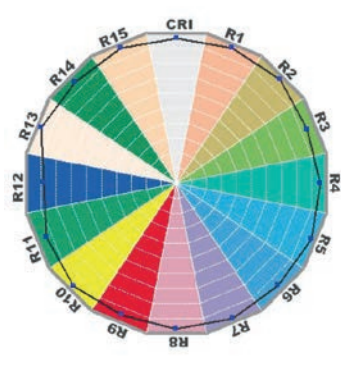
CQS Q values

Q1	Q2	Q3	Q4	Q5	Q6	Q7	Q8	Q9	Q10	Q11	Q12	Q13	Q14	Q15
97,6	97,6	93,3	95,1	98,5	96,2	95,4	97,7	97,2	97,0	98,0	98,5	98,7	97,9	97,8

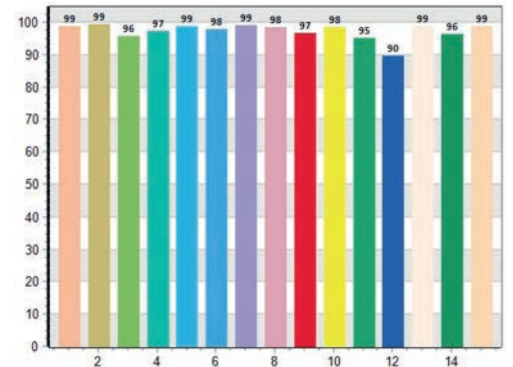
CQS: 96, 55



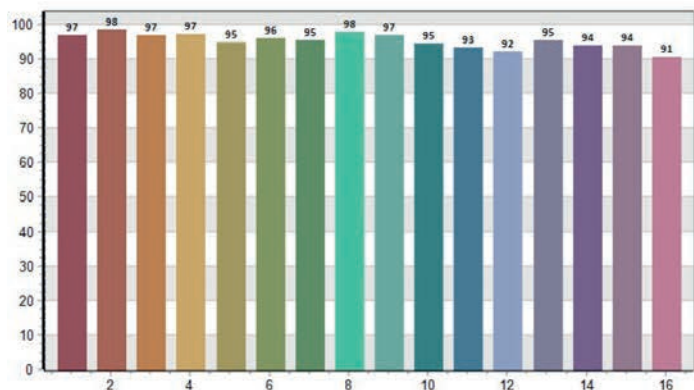
CRI-2



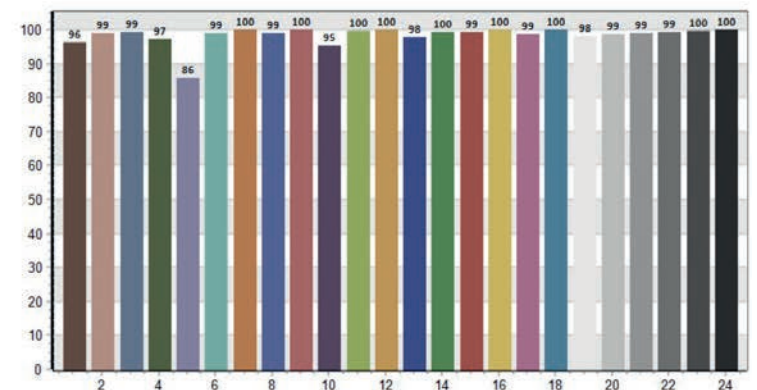
CRI: 98, 15



TM30: 95, 99

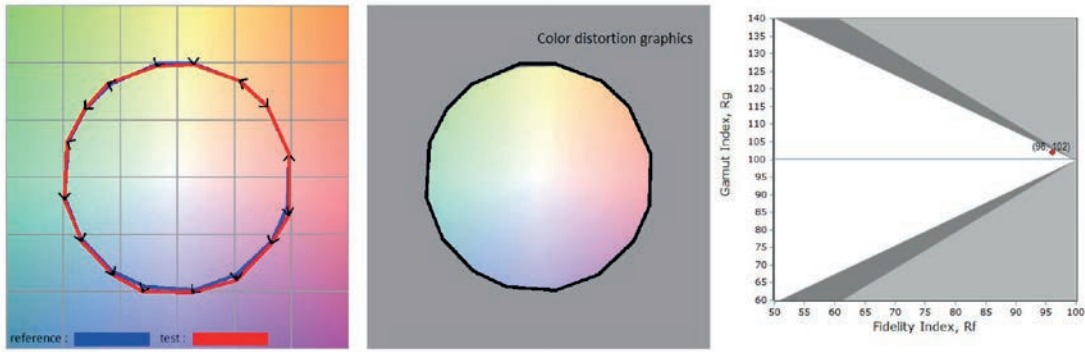


TLCI: 97, 04



LEDko FS6 HD-R with Lens Tube Profile 36° - 3.200K

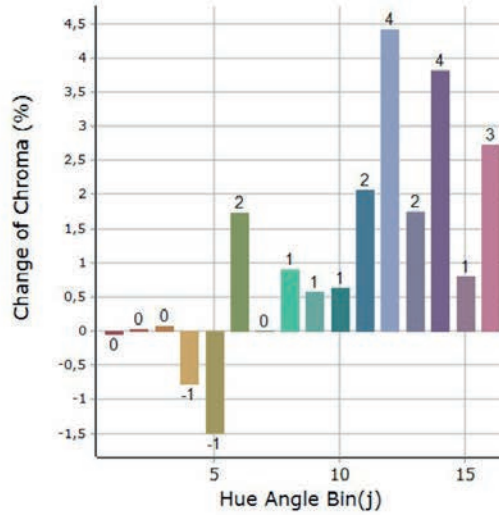
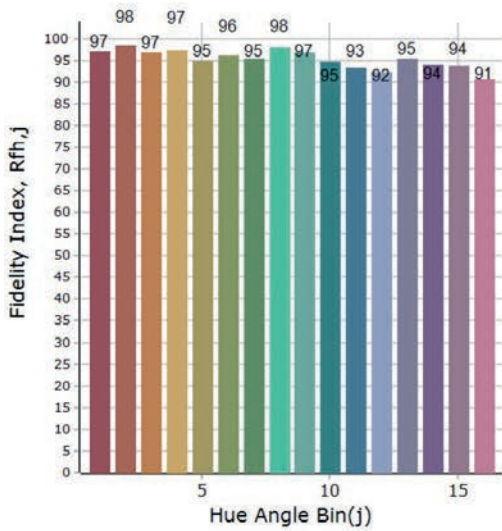
General Color Rendition



Rf
96,0
Fidelity index Rf

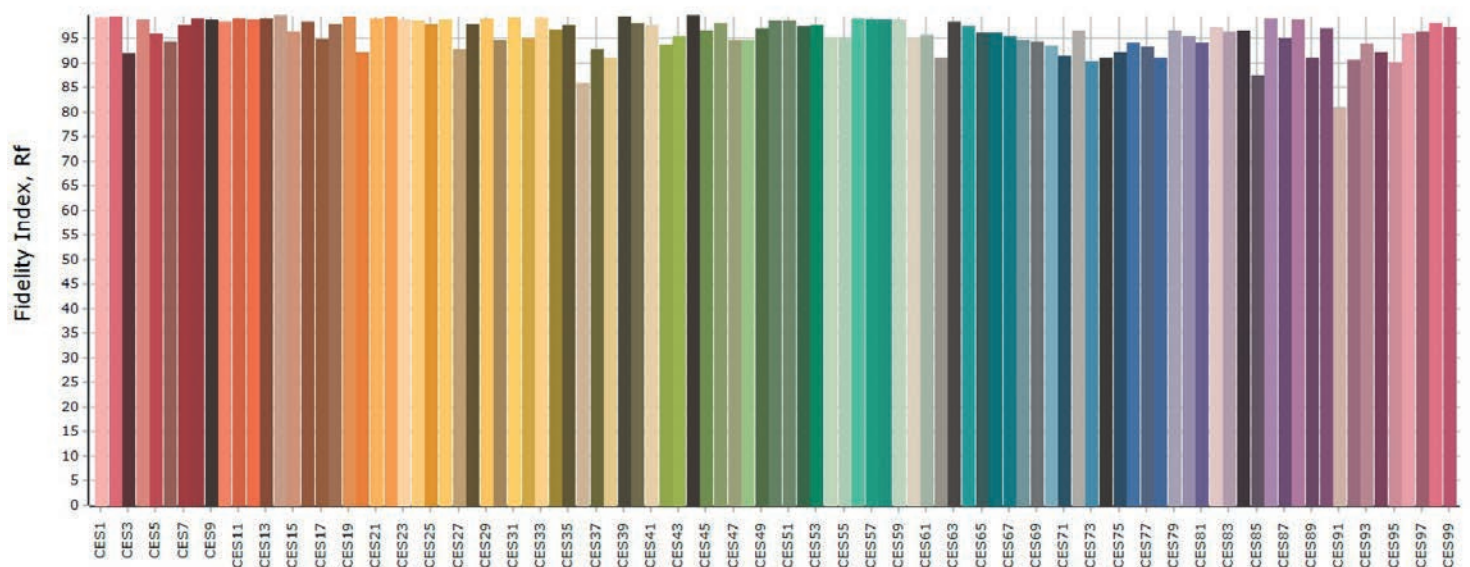
Rg
102,0
Gammut index Rg

Color Rendition by Hue



Hue Bin	Rf	Graphic shifts (%)	
		Chroma	Hue
1	97,1	0,0%	-0,2%
2	98,5	0,0%	-0,2%
3	96,9	0,1%	0,8%
4	97,3	-0,8%	0,0%
5	94,9	-1,5%	1,2%
6	96,0	1,7%	1,1%
7	95,4	0,0%	1,1%
8	98,0	0,9%	-0,1%
9	96,8	0,6%	1,9%
10	94,6	0,6%	2,7%
11	93,2	2,1%	3,6%
12	92,2	4,4%	-0,3%
13	95,4	1,7%	-2,3%
14	93,9	3,8%	-2,2%
15	93,8	0,8%	-2,2%
16	90,6	2,7%	-6,2%

Color Fidelity by Sample



LEDko FS6 HD-R with Lens Tube Profile 36° - 5.600K

General

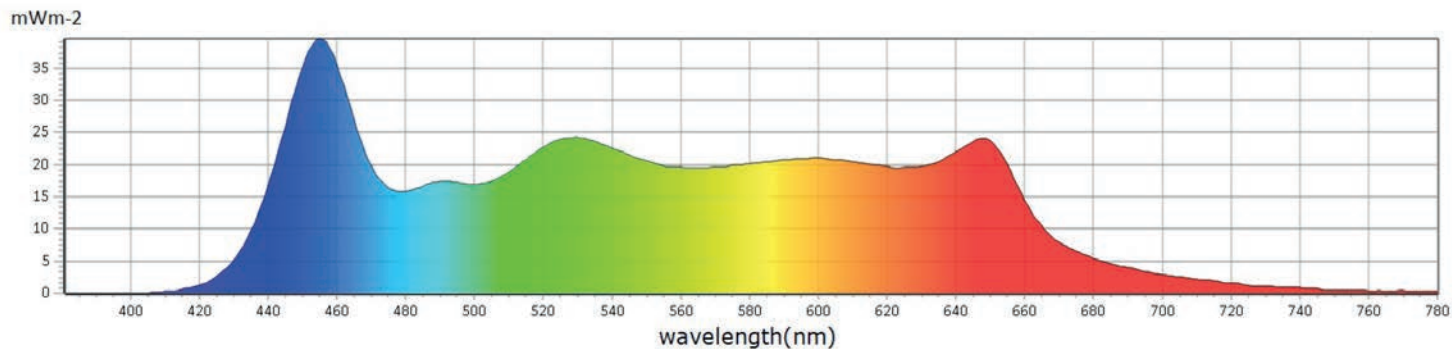
I_{CCT}	5660 K
I_x	0,3289
I_y	0,3360
$I_{\lambda D}$	500 mm
$I_{\lambda P}$	454 mm



Measurements

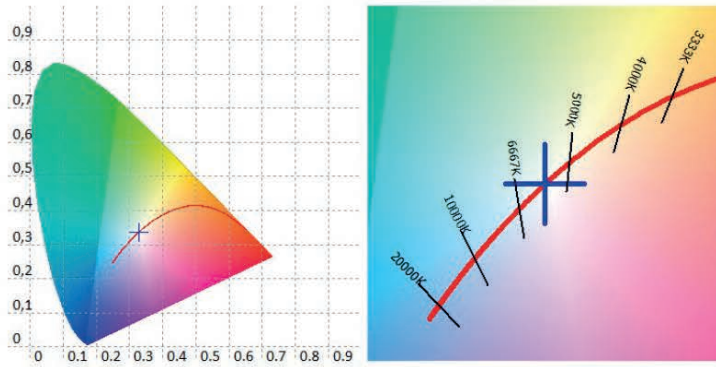
CCT	5660 K	u'10	0,2072	Duv	-0,0010	GAI	97,0	IRR	5,216	R6	94,7	R15	95,9
LUX	1506 lx	v'10	0,4766	MEL	1502 lx	PPFD	23,52 umolm 2s-1	CQS	95,1	R7	98,6		
I-Time	4800 us	X	1474,00	LambdaPV	39,56	PFD	24,03 umolm 2s-1	CRI	97,2	R8	99,0		
x	0,3289	Y	1505,71	LambdaD	500 nm	PFD-B	6,081 umolm 2s-1	TLCI	97,4	R9	96,5		
y	0,3360	Z	1501,64	LambdaP	454 nm	PFD-G	9,562 umolm 2s-1	R1	96,6	R10	97,6		
u'	0,2064	delta-x	0,0000	Purity	1,34 %	PFD-R	7,874 umolm 2s-1	R2	98,3	R11	94,5		
v'	0,4744	delta-y	-0,0020	fc	139,9	PFD-UV	0,0008 umolm 2s-1	R3	95,5	R12	76,9		
x10	0,3320	delta-u'	0,0008	Rf	93,1	PFD-FR	0,5098 umolm 2s-1	R4	97,7	R13	96,7		
y10	0,3494	delta-v'	-0,0010	Rg	101,3	S/P	2,27	R5	97,2	R14	96,6		

Spectrum

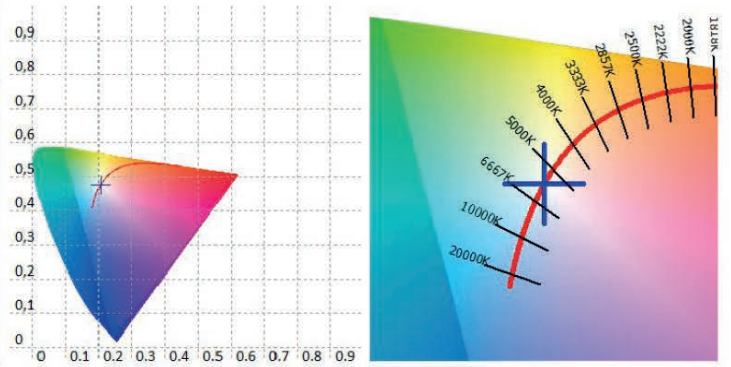


LEDko FS6 HD-R with Lens Tube Profile 36° - 5.600K

CIE 1931



CIE 1976



CRI values, only R1-R8 are used to calculate final CRI

R1	R2	R3	R4	R5	R6	R7	R8	R9	R10	R11	R12	R13	R14	R15
96,6	98,3	95,5	97,7	97,2	94,7	98,6	99,0	96,5	97,6	94,5	76,9	96,7	96,6	95,9

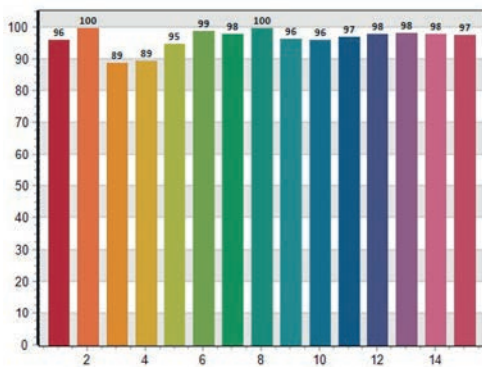
TM30 C values, 16 binned values out of total of 99 C values

C1	C2	C3	C4	C5	C6	C7	C8	C9	C10	C11	C12	C13	C14	C15	C16
93,8	96,7	95,2	93,6	91,4	96,0	95,4	92,3	90,4	87,3	85,1	95,1	94,0	94,0	84,5	96,4

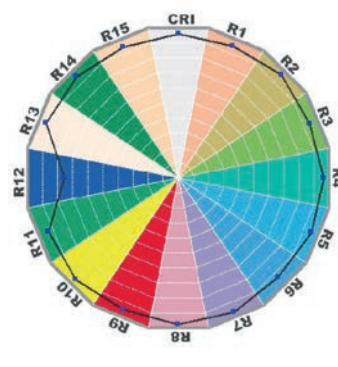
CQS Q values

Q1	Q2	Q3	Q4	Q5	Q6	Q7	Q8	Q9	Q10	Q11	Q12	Q13	Q14	Q15
96,0	99,6	88,6	89,1	94,7	98,7	97,7	99,7	96,3	96,0	97,0	97,8	98,0	97,8	97,4

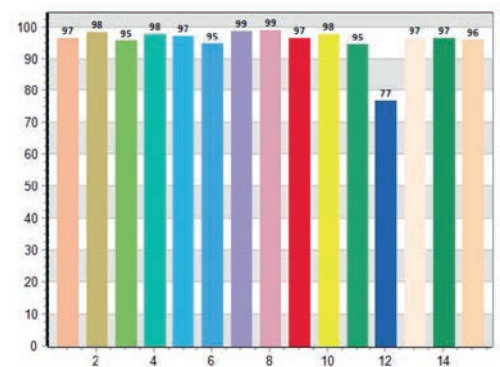
CQS: 95, 11



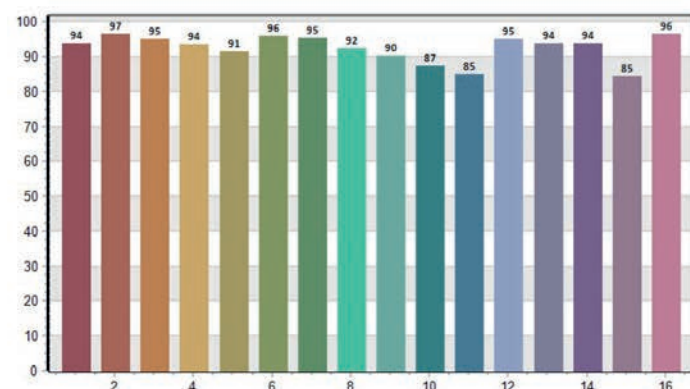
CRI-2



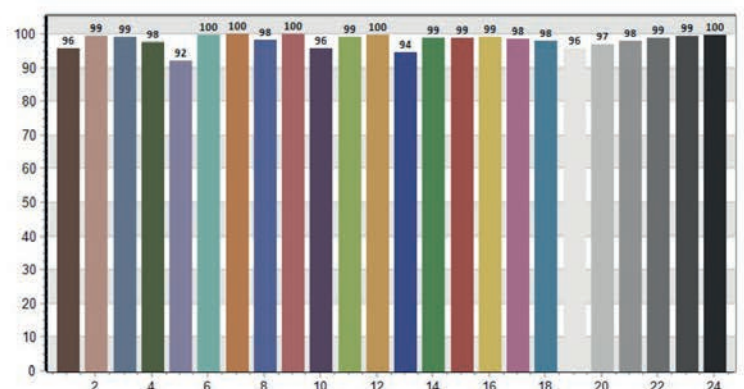
CRI: 97, 20



TM30: 93, 12

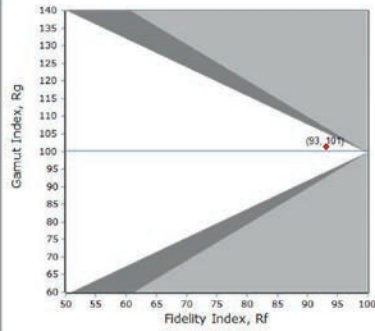
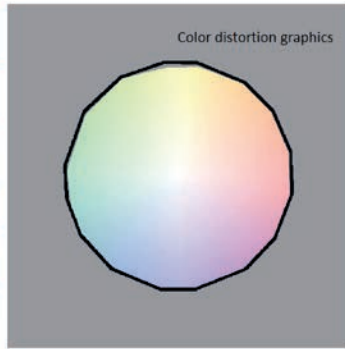
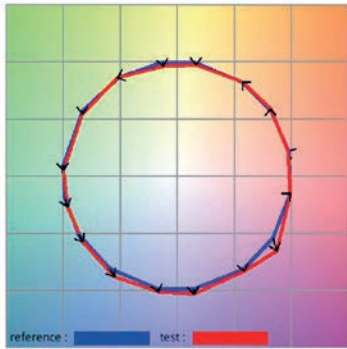


TLCI: 97, 39



LEDko FS6 HD-R with Lens Tube Profile 36° - 5.600K

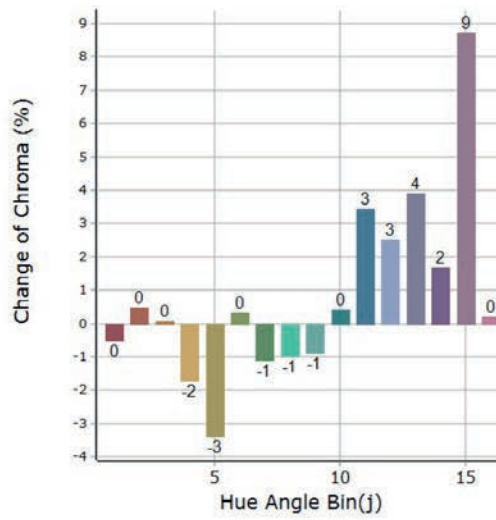
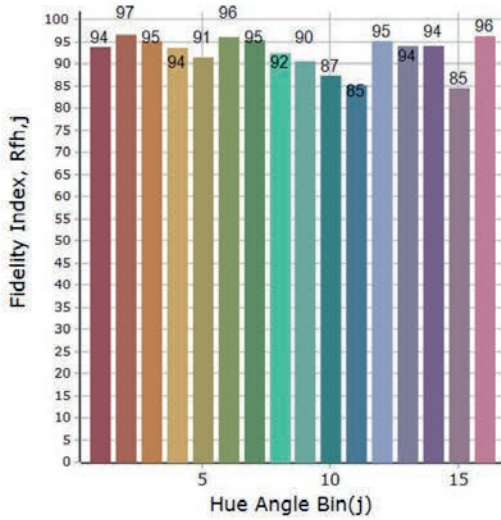
General Color Rendition



Rf
93,1
Fidelity index Rf

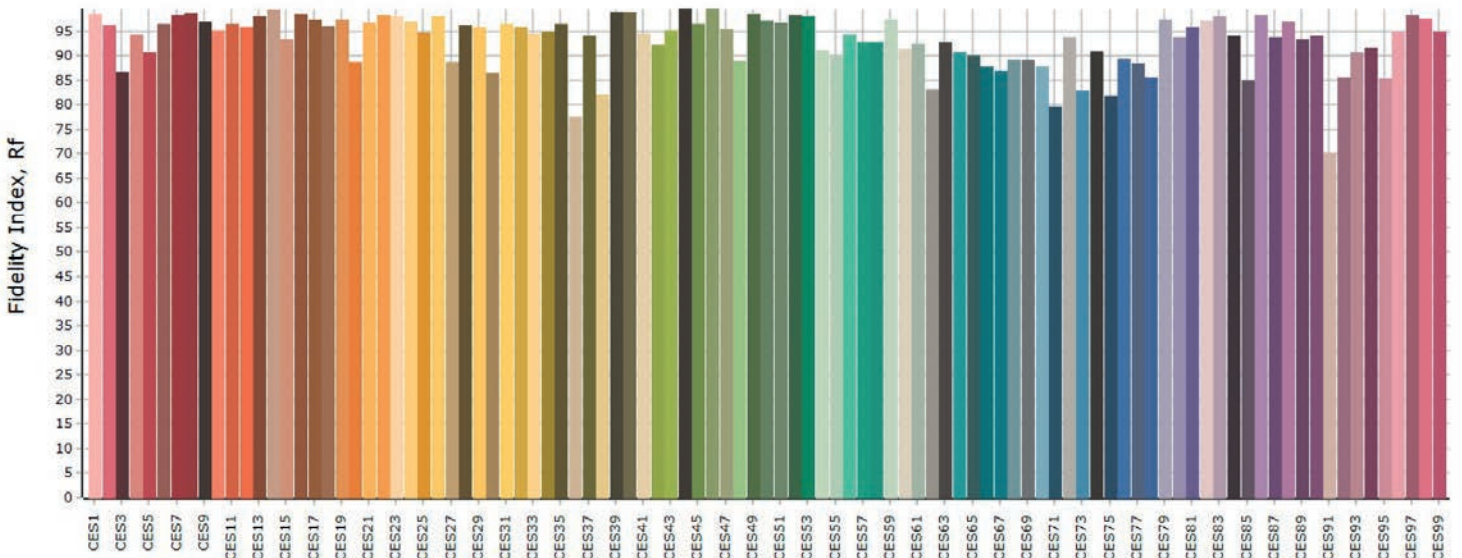
Rg
101,3
Gammut index Rg

Color Rendition by Hue



Hue Bin	Rf	Graphic shifts (%)	
		Chroma	Hue
1	93,8	-0,5%	0,6%
2	96,6	0,5%	0,9%
3	95,2	0,1%	0,3%
4	93,6	-1,7%	-0,4%
5	91,4	-3,4%	-0,1%
6	96,0	0,3%	1,2%
7	95,4	-1,1%	1,8%
8	92,3	-1,0%	4,0%
9	90,4	-0,9%	7,7%
10	87,3	0,4%	7,2%
11	85,1	3,4%	7,4%
12	95,1	2,5%	1,0%
13	94,0	3,9%	-0,3%
14	94,0	1,7%	-0,7%
15	84,5	8,7%	-7,0%
16	96,4	0,2%	0,3%

Color Fidelity by Sample



● Coemar Lighting S.r.l.

Via Carpenedolo, 90
46043, Castiglione delle Stiviere (MN) – Italy

P. +39 0376 1514412
M1. info@coemar.com
M2. service@coemar.com
W. coemar.com

P.iva – C.f. 02415330204



Coemar reserves the right to change specifications without prior notice.

Last Update: 03 May 2024 - vrs. 1.0