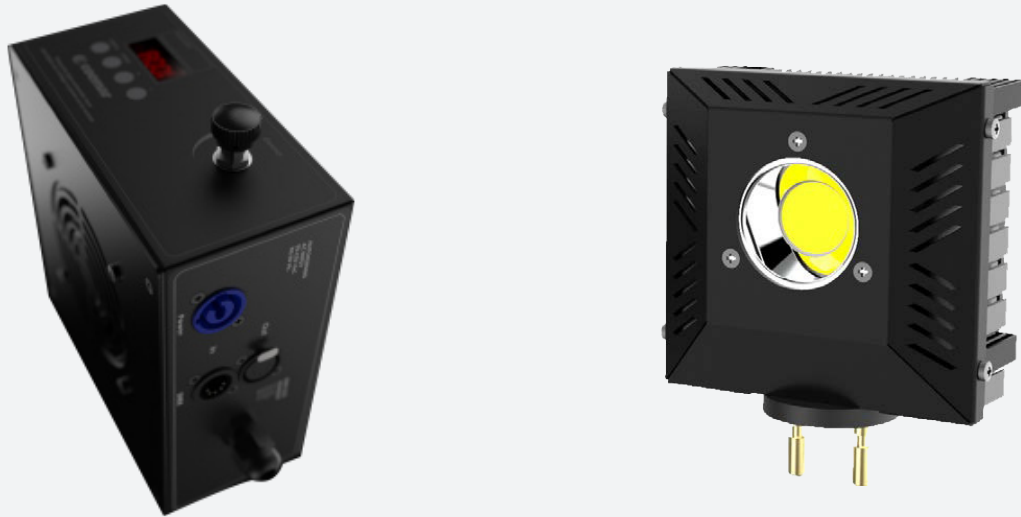




# ReLite LED Kit DIM

Last update:  
29/03/2023



ReLite LED Kit DIM T/D Led Module with G22 pins

#### Introducing

● If you want to **switch your TV studio or theatre from halogen to LED**, the ReLite Series is the perfect solution for you. **Easy retrofitting, excellent white light quality, huge power savings** with almost **no heat generated** and **long life LED lamps** are just some of the advantages offered by our ReLite Series.

The new ReLite Led Kit is the retrofit solution to **every old halogen fixture**, since the LED socket is adaptable to every projector. This retrofit LED lamp shows an **improved light output compared** to the standard ReLite versions thanks to the external box: this technology enables to keep all the electronics of the product outside the fixture, thus avoiding the overheating of the projector.

With the **ReLite Led Kit DIM version**, the light source will be **controllable via traditional TRIAC/IGBT dimmers** (through a potentiometer on board) **and by DMX** with full digital settings. This retrofit solution has been designed for all installations where traditional dimmers are still in use.

Tungsten and Daylight versions available (CRI 90 or Studio version with CRI > 95).

#### Key Features

- Tungsten or Daylight COB LED
- 3 different dimming control mode: with traditional dimmers, through a potentiometer on board and DMX
- CRI 90 or CRI > 95
- CCT Fixed white 3.200 K or 5.600 K
- Led engine, size, pins and power will be customized according to the projector where it will be installed
- Aluminium and technopolymer
- Black (standard)
- With clamp or customized fixing system for installation on the fixture
- European Conformity certification

## General

● LED Source	Tungsten or Daylight COB LED
● CCT Range	● ● ● ● ● Fixed white 3.200 K or 5.600 K
● Color Rendition Average	CRI 90 or CRI > 95
● Dimming	Linear dimming from 1% to 100%, 4 dimming curves selectable, simulating halogen or discharge lamp based fixtures 3 different dimming control mode: with traditional dimmers, through a potentiometer on board and DMX
● Camera flicker control	Yes
● Calibrated Cob	Yes
● Electronics Type	Guaranteed flicker-free
● L80 Rating (hours to 80% output)	50.000 Hours

## Electrical

● Voltage Input	90-250 V, 50/60 Hz, auto-sensing
● Power Consumption	90-200 W depending on the LED module and the size / model of the fixture
● Power Connection	In PowerCon connector
● Data Connection	In and Out DMX 5 pin locking XLR connectors

## Thermal

● Thermal protection	Yes
● Ambient Operating Temperature	0°C - +40°C (32°F - 104°F)

## Control

● Protocols	DMX512, Dimming controlled via standard external power dimming unit or with potentiometer knob
● RDM configuration	Yes
● DMX Channels	5
● Display	Setting, addressing, testing and measurements via LEDs display

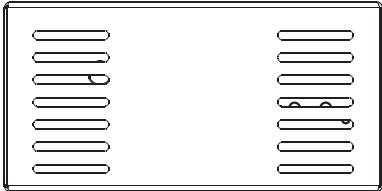
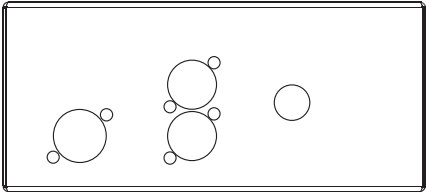
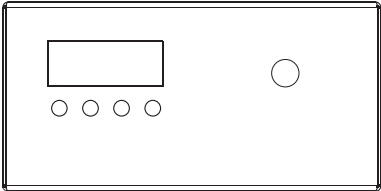
## Physical

● Mounting Options	With clamp or customized fixing system for installation on the fixture
● Materials	Aluminium and technopolymer
● Weight	3 Kg / 6.61 lbs
● Length	190 mm / 7.48 in
● Height	85 mm / 3.35 in
● Width	170 mm / 6.70 in
● IP Rating	IP20
● Color options	Black (standard)

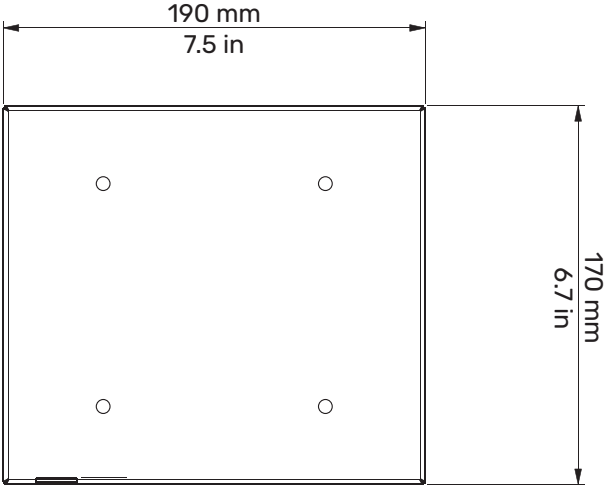
**5 Channels**

- 01 → Master Dimmer
- 02 → Spare Channel
- 03 → Dimmer Fine
- 04 → Strobe Effect
- 05 → Spcial Functions

Drawing Size



85 mm  
3.3 in





Broadcast - BBC Studios, Scotland, UK

Product	ReLite LED Kit DIM D
CCT	5.600 K
CRI	>95

● Coemar Lighting S.r.l.

Via Carpenedolo, 90  
46043, Castiglione delle Stiviere (MN) – Italy

P. +39 0376 1514412

M1. info@coemar.com

M2. service@coemar.com

W. coemar.com

P.iva – C.f. 02415330204

