

# Risalto LED M VariWhite +

Codice Prodotto:  
F134G000M (Fresnel)  
F134G000N (PC)

Ultimo Aggiornamento:  
02/09/2024



Risalto LED M VariWhite +

#### Introduzione

● Progettato con elettronica "+" e un nuovo display OLED, questo proiettore Fresnel o PC è l'evoluzione del Risalto VariWhite.

L'elettronica "+" con controllo avanzato dei LEDs permette una dimmerazione più morbida e lineare ed offre una maggiore efficienza luminosa con un indice di resa cromatica del bianco maggiore di 95 (CRI > 95).

Grazie al potenziometro è possibile una navigazione del menù più rapida e funzionale.

#### Caratteristiche Principali



● 200 W Modulo LED VariWhite



● CRI > 95



● CCT Bianco Variabile 2.800 K → 6.500 K



● Proiezione omogenea del fascio di luce ed elevato flusso luminoso



● Lenti Fresnel o PC (diametro 150 mm)  
● Zoom range da 11° a 82° (con lenti Fresnel)  
● Zoom range da 11° a 66° (con lenti PC)



● Acciaio e alluminio pressofuso con rivestimento in polvere epossidica di alta qualità che protegge contro la corrosione



● Colori personalizzati su richiesta (opzionale)



● Forcella manuale (standard) o forcella Pole-Operated (Opzionale)



● Certificazione CE

Specifiche Generali	
● Sorgente LED	Modulo LED VariWhite
● Range CCT	●●●●● Bianco Variabile 2.800 K → 6.500 K
● Media Resa Cromatica	CRI > 95
● Dimmer	8 o 16 bit, 5 curve selezionabili: Esponenziale, Logaritmica, Lineare, Alogena e Standard
● Selezione "Smooth Dimming"	Veloce, Lento e Molto Lento
● Strobo	Strobo elettronico sincronizzato, casuale o effetto pulsato
● Lenti	Lenti di vetro Fresnel o PC (diametro 150 mm)
● Ottiche	Zoom range da 11° a 82° (con lenti Fresnel) Zoom range da 11° a 66° (con lenti PC)
● Controllo flicker-free per telecamere/intervallo Hz	Operazione "Flicker-free" con frequenza dei LEDs controllata tramite DMX da 600 a 20.000 Hz
● COB Calibrato	Sì
● L80 (ore all'80% di potenza)	50.000 Ore
Specifiche Elettriche	
● Alimentazione AC	90-264 V, 50/60 Hz, auto-sensing
● Massimo Consumo Energetico	200 W - 0.92 A @ 230 V, 1.83 A @ 115 V - cosφ 0.95
● Connessione Elettrica	Connettori PowerCon TRUE1 Top In e Out, cavo da 1.5 m PowerCon senza spina di alimentazione
● Connessione DMX	Ingresso e uscita XLR a 5 poli
Specifiche Termiche	
● Temperatura ambientale di funzionamento	0°C - +40°C
● Ventola (controllabile)	Sì, 4 diverse impostazioni: SILENT, STUDIO, AUTO, DMX REGULATED
Controlli	
● Protocolli	DMX512, RDM (Gestione remota dei dispositivi), Wireless (opzionale By LumenRadio)
● Configurazione RDM	Sì
● Canali DMX	5 / 2 / 1
● Display	Display OLED con potenziometro on-board per settaggi rapidi
● Aggiornamento Software	Tramite segnale DMX (Con interfaccia RDM, codice AC10011A001)
Specifiche Fisiche	
● Forcella	Forcella manuale (standard) o forcella Pole-Operated (Opzionale)
● Materiali	Acciaio e alluminio pressofuso con rivestimento in polvere epossidica di alta qualità che protegge contro la corrosione
● Peso	8.5 Kg
● Lunghezza	413 mm
● Altezza	218 mm - Con Forcella: 348 mm
● Larghezza	281 mm
● Grado di Protezione IP	IP20
● Opzioni di colore	Nero (standard), colori personalizzati su richiesta (opzionale)
Accessori Generali	
BC10034A003	Paraluce a 4 alette (incluso)
GKIT17 (USA) / GKIT16 (EU)	Cavo PowerCON TRUE1 Top da 1.5 m senza spina di alimentazione (incluso)
BC10034A006	Telaio porta filtro (incluso)



Lenti PC

Risalto Led M VW + Pannello Posteriore / Lenti PC

Tabelle DMX

**5 Canali**

- 01 → Master Dimmer
- 02 → Dimmer Fine
- 03 → Tonalità di Bianco
- 04 → Strobo
- 05 → Funzioni Speciali

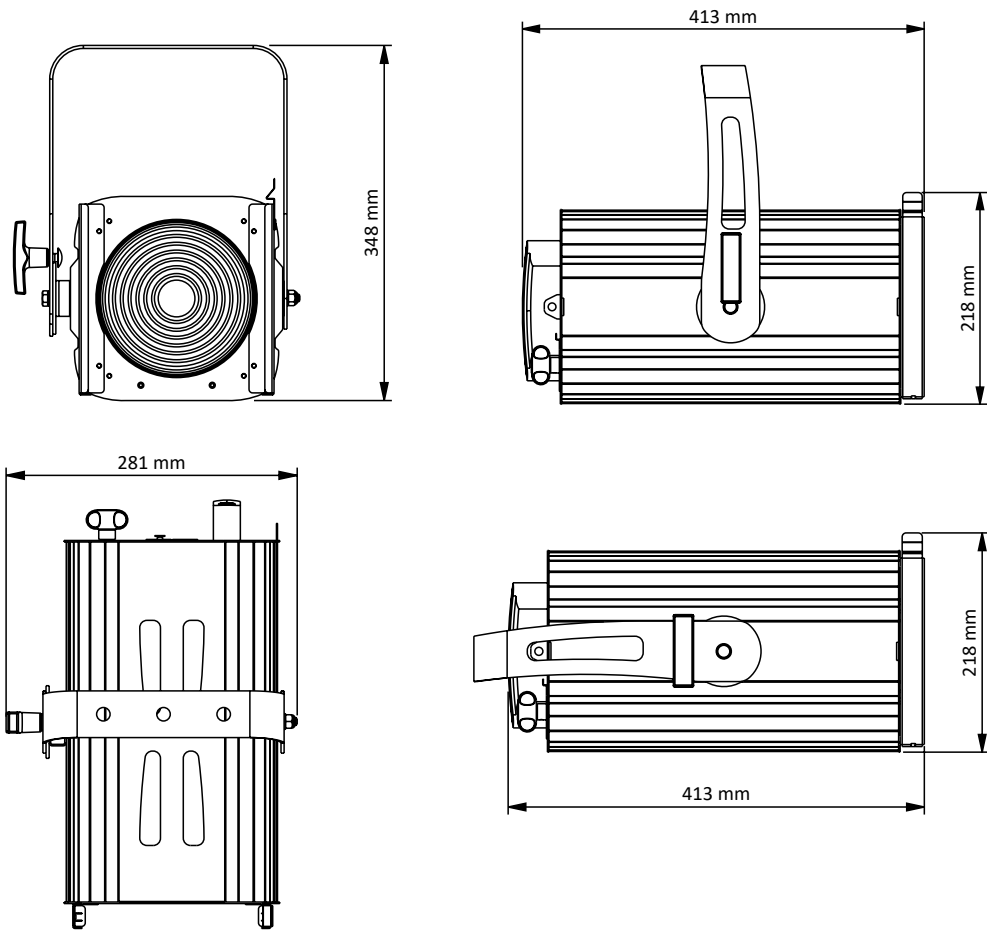
**2 Canali**

- 01 → Master Dimmer
- 02 → Tonalità di Bianco

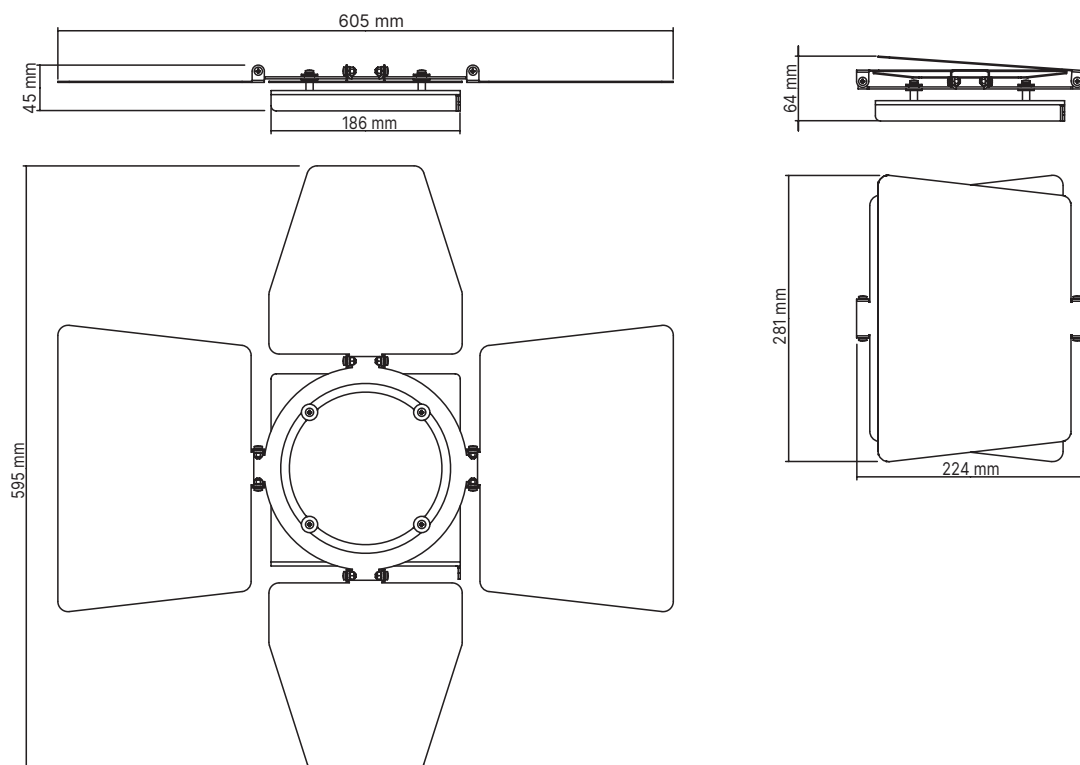
**1 Canale**

- 01 → Master Dimmer





Paraluce a 4 alette

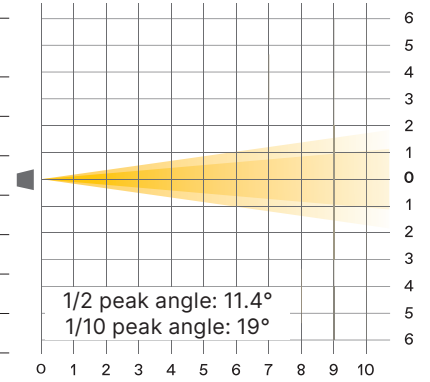


## Risalto M VariWhite +, Fresnel

Rilevazioni a 4.3 metri

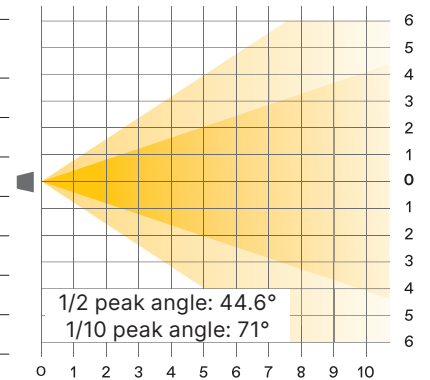
Zoom min.

Distanza (m)	1	2	3	4	5	6	7	8	9	10	
lux	<b>2.800 K</b>	63106	15777	7012	3944	2524	1753	1288	986	779	631
	<b>3.200 K</b>	73627	18407	8181	4602	2945	2045	1503	1150	909	736
	<b>4.000 K</b>	91784	22946	10198	5737	3671	2550	1873	1434	1133	918
	<b>5.600 K</b>	100678	25170	11186	6292	4027	2797	2055	1573	1243	1007
	<b>6.500 K</b>	91692	22923	10188	5731	3668	2547	1871	1433	1132	917
<b>1/2 P.A. Ø (m)</b>	0.20	0.40	0.60	0.80	1.00	1.20	1.40	1.60	1.80	2.00	
<b>1/10 P.A. Ø (m)</b>	0.33	0.67	1.00	1.34	1.67	2.01	2.34	2.68	3.01	3.35	
<b>2.800 K</b>	CRI 97.3	TLCI 97.1									
<b>3.200 K</b>	CRI 96.6	TLCI 97.7									
<b>4.000 K</b>	CRI 96.3	TLCI 97.9									
<b>5.600 K</b>	CRI 96.7	TLCI 98.4									
<b>6.500 K</b>	CRI 97.4	TLCI 98.3									



Zoom max.

Distanza (m)	1	2	3	4	5	6	7	8	9	10	
lux	<b>2.800 K</b>	10817	2704	1202	676	433	300	221	169	134	108
	<b>3.200 K</b>	12795	3199	1422	800	512	355	261	200	158	128
	<b>4.000 K</b>	15975	3994	1775	998	639	444	326	250	197	160
	<b>5.600 K</b>	17418	4354	1935	1089	697	484	355	272	215	174
	<b>6.500 K</b>	15901	3975	1767	994	636	442	325	248	196	159
<b>1/2 P.A. Ø (m)</b>	0.82	1.64	2.46	3.28	4.10	4.92	5.74	6.56	7.38	8.20	
<b>1/10 P.A. Ø (m)</b>	1.43	2.85	4.28	5.71	7.13	8.56	9.99	11.41	12.84	14.27	
<b>2.800 K</b>	CRI 96.1	TLCI 96.5									
<b>3.200 K</b>	CRI 95.4	TLCI 97.3									
<b>4.000 K</b>	CRI 95.1	TLCI 97.7									
<b>5.600 K</b>	CRI 95.6	TLCI 98.3									
<b>6.500 K</b>	CRI 96.7	TLCI 98.2									



**Risalto M VariWhite +, Fresnel, Zoom min., 2.800K**

Rilevazioni a 4.3 metri

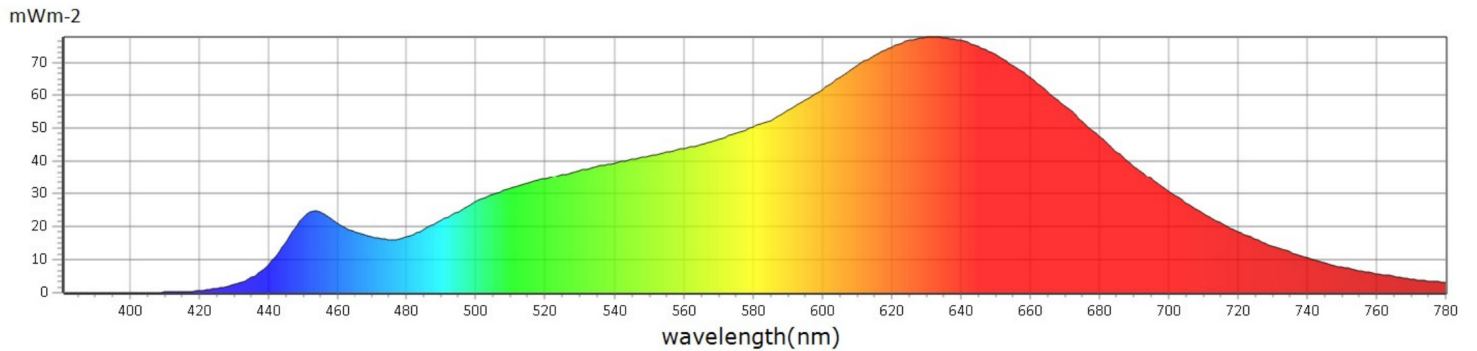
## Generale

● CCT	2776 K
● x	0,4551
● y	0,4117
● LambdaD	584 nm
● LambdaP	631 nm

## Misurazioni

CCT : 2776 K	x10 : 0,4599	delta-x : 0,0013	LambdaD : 584 nm	PPFD : 58,46 $\mu\text{molm}^{-2}\text{s}^{-1}$	S/P : 1,38	R3 : 99,1	R10 : 98,1
LUX : 3413 lx	y10 : 0,4113	delta-y : 0,0025	LambdaP : 631 nm	PFD : 64,47 $\mu\text{molm}^{-2}\text{s}^{-1}$	IRR : 12,78	R4 : 97,6	R11 : 94,3
I-Time : 3600 us	u'10 : 0,2622	delta-u' : -0,0003	Purity : 59,95%	PFD-B : 4,986 $\mu\text{molm}^{-2}\text{s}^{-1}$	CQS : 94,9	R5 : 98,0	R12 : 90,2
x : 0,4551	v'10 : 0,5276	delta-v' : 0,0012	fc : 317,2	PFD-G : 19,93 $\mu\text{molm}^{-2}\text{s}^{-1}$	CRI : 97,3	R6 : 95,6	R13 : 98,1
y : 0,4117	X : 3773,24	Duv : 0,0008	Rf : 94,2	PFD-R : 33,55 $\mu\text{molm}^{-2}\text{s}^{-1}$	TLCI : 97,1	R7 : 96,5	R14 : 98,5
u' : 0,2589	Y : 3413,49	MEL : 1810 lx	Rg : 99,0	PFD-UV : 0,0005 $\mu\text{molm}^{-2}\text{s}^{-1}$	R1 : 98,5	R8 : 94,5	R15 : 97,8
v' : 0,5270	Z : 1104,92	LambdaPV : 77,69	GAI : 49,1	PFD-FR : 6,010 $\mu\text{molm}^{-2}\text{s}^{-1}$	R2 : 98,7	R9 : 88,2	

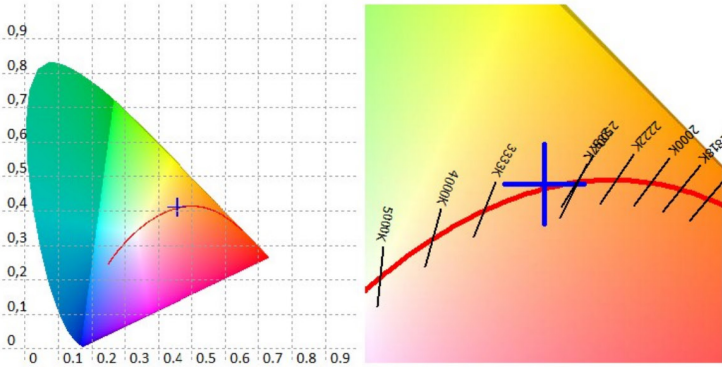
## Spectrum



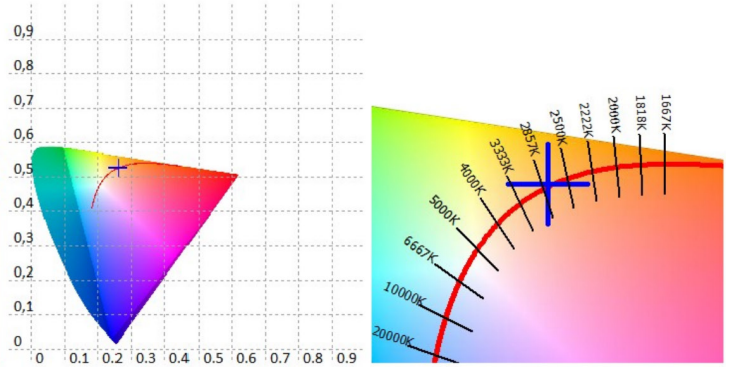
# Risalto M VariWhite +, Fresnel, Zoom min., 2.800K

Rilevazioni a 4.3 metri

CIE 1931



CIE 1976



Valori CRI, solo R1-R8 sono usati per calcolare il CRI finale

R1	R2	R3	R4	R5	R6	R7	R8	R9	R10	R11	R12	R13	R14	R15
98,5	98,7	99,1	97,6	98,0	95,6	96,5	94,5	88,2	98,1	94,3	90,2	98,1	98,5	97,8

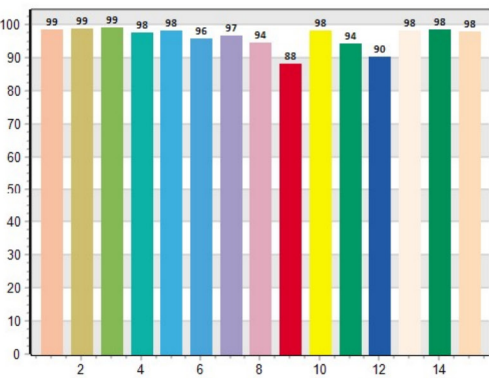
Valori TM30 C, 16 valori raggruppati su un totale di 99 valori C

C1	C2	C3	C4	C5	C6	C7	C8	C9	C10	C11	C12	C13	C14	C15	C16
95,0	97,4	95,6	91,6	94,5	95,5	91,4	94,6	93,6	93,5	94,0	91,2	91,6	91,4	92,4	90,0

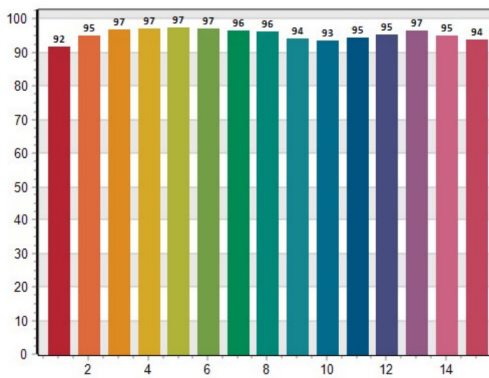
Valori CQS Q

Q1	Q2	Q3	Q4	Q5	Q6	Q7	Q8	Q9	Q10	Q11	Q12	Q13	Q14	Q15
91,8	95,0	96,9	97,2	97,4	97,2	96,4	96,1	94,2	93,5	94,6	95,2	96,6	95,0	93,8

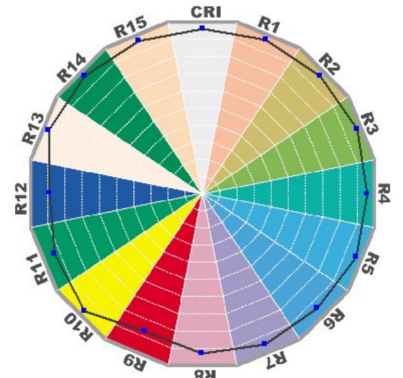
CRI: 97.30



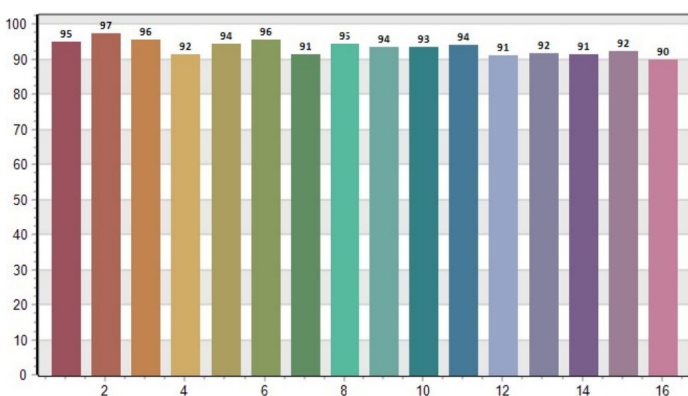
CQS: 94.94



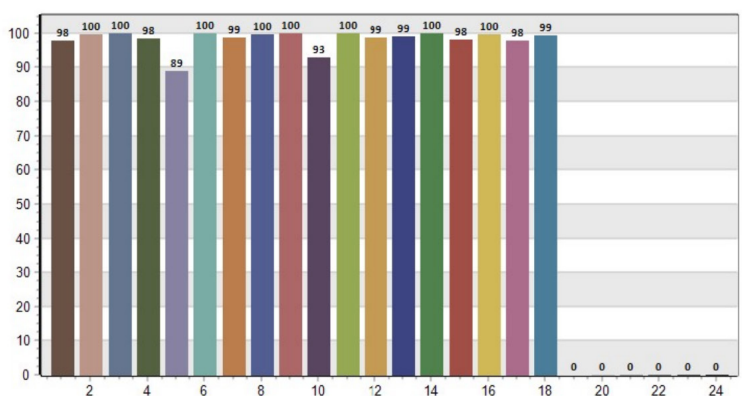
CRI-2



TM30: 94.24



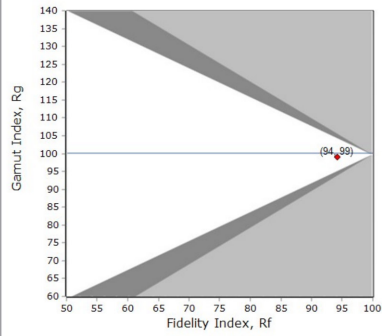
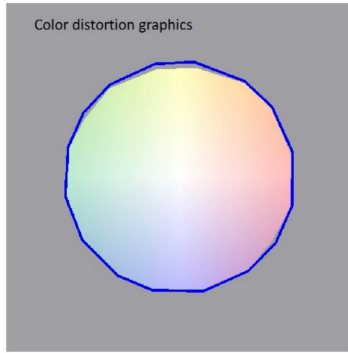
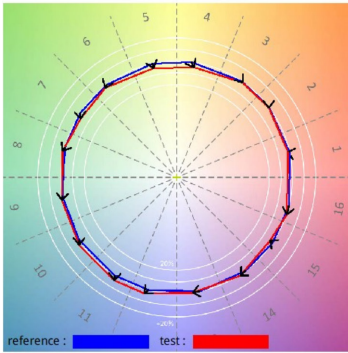
TLCI: 97.05



# Risalto M VariWhite +, Fresnel, Zoom min., 2.800K

Rilevazioni a 4.3 metri

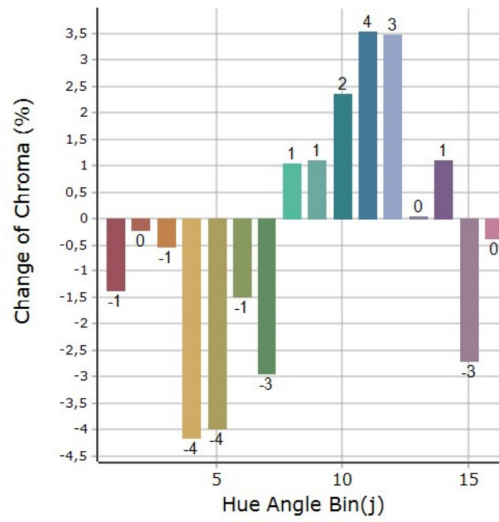
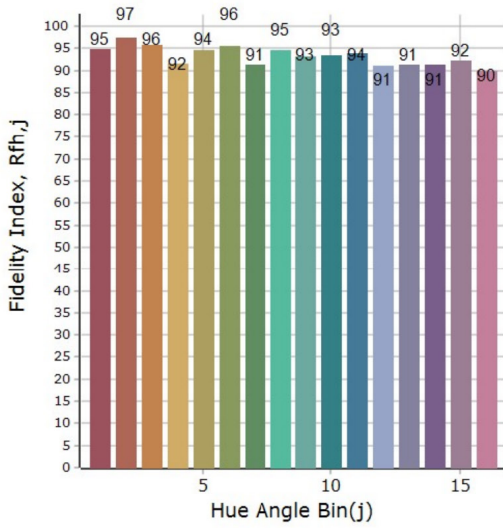
## Resa del colore generale



**Rf 94,1**  
Fidelity index Rf

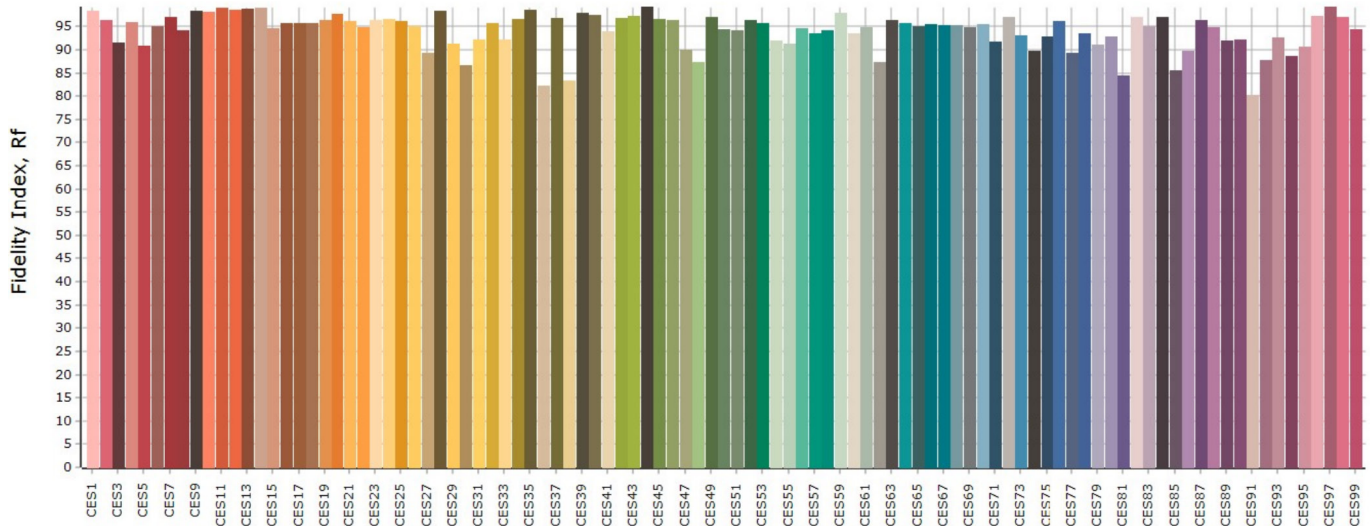
**Rg 99,0**  
Gamut index Rg

## Resa del colore per Hue



Hue Bin	Rf	Graphic shifts (%)	
		Chroma	Hue
1	94,8	-1,4%	0,8%
2	97,4	-0,2%	-0,5%
3	95,7	-0,5%	-1,2%
4	91,6	-4,1%	-3,2%
5	94,5	-4,0%	0,0%
6	95,6	-1,5%	2,1%
7	91,2	-2,9%	4,0%
8	94,6	1,0%	3,2%
9	93,2	1,1%	3,4%
10	93,3	2,4%	3,3%
11	93,8	3,5%	2,3%
12	91,0	3,5%	-2,9%
13	91,4	0,1%	-6,0%
14	91,2	1,1%	-6,1%
15	92,2	-2,7%	0,2%
16	89,8	-0,4%	-7,6%

## Fedeltà del colore per campione





**Risalto M VariWhite +, Fresnel, Zoom max., 2.800K**

Rilevazioni a 4.3 metri

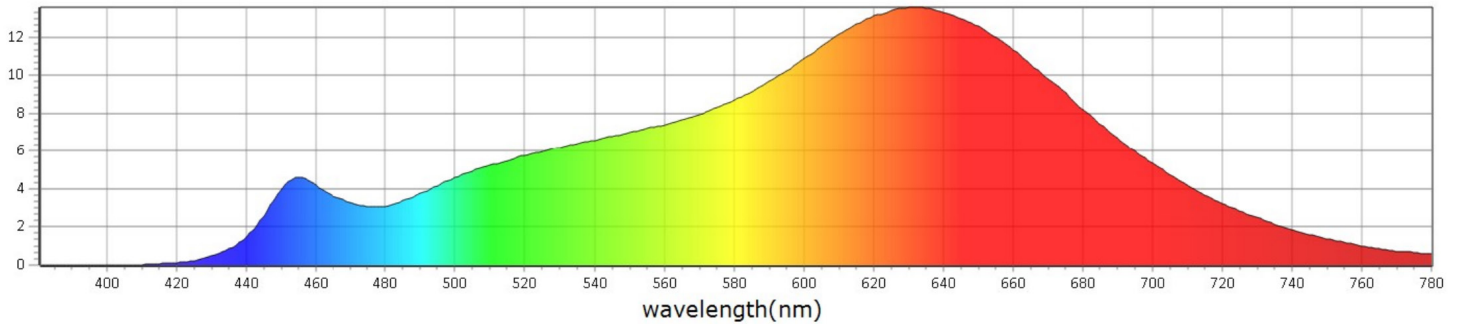
## Generale

● CCT	2725 K
● x	0,4550
● y	0,4050
● LambdaD	585 nm
● LambdaP	632 nm

## Misurazioni

CCT : 2725 K	x10 : 0,4593	delta-x : -0,0029	LambdaD : 585 nm	PPFD : 10,14 $\mu\text{molm}^{-2}\text{s}^{-1}$	S/P : 1,38	R3 : 98,3	R10 : 94,9
LUX : 585,4 lx	y10 : 0,4050	delta-y : -0,0051	LambdaP : 632 nm	PFD : 11,20 $\mu\text{molm}^{-2}\text{s}^{-1}$	IRR : 2,220	R4 : 98,0	R11 : 94,2
I-Time : 18000 us	u'10 : 0,2646	delta-u' : 0,0004	Purity : 57,94%	PFD-B : 0,9059 $\mu\text{molm}^{-2}\text{s}^{-1}$	CQS : 95,3	R5 : 97,0	R12 : 88,0
x : 0,4550	v'10 : 0,5251	delta-v' : -0,0024	fc : 54,41	PFD-G : 3,390 $\mu\text{molm}^{-2}\text{s}^{-1}$	CRI : 96,1	R6 : 93,0	R13 : 97,0
y : 0,4050	X : 657,60	Duv : -0,0017	Rf : 94,4	PFD-R : 5,847 $\mu\text{molm}^{-2}\text{s}^{-1}$	TLCI : 96,5	R7 : 94,8	R14 : 99,0
u' : 0,2618	Y : 585,44	MEL : 313,7 lx	Rg : 100,1	PFD-UV : 0,0000 $\mu\text{molm}^{-2}\text{s}^{-1}$	R1 : 97,8	R8 : 93,1	R15 : 98,4
v' : 0,5245	Z : 202,37	LambdaPV : 13,58	GAI : 52,2	PFD-FR : 1,055 $\mu\text{molm}^{-2}\text{s}^{-1}$	R2 : 97,3	R9 : 87,3	

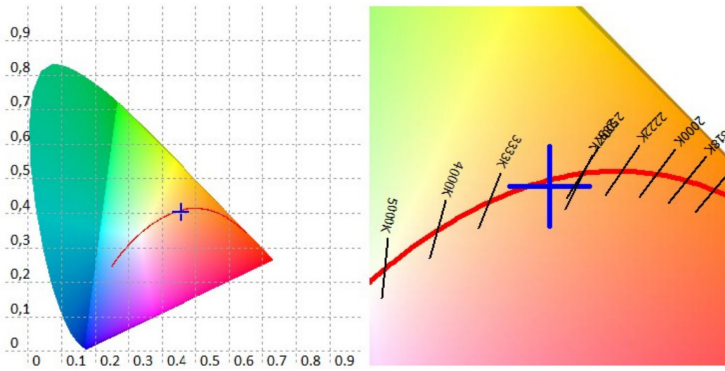
## Spectrum

mWm<sup>-2</sup>

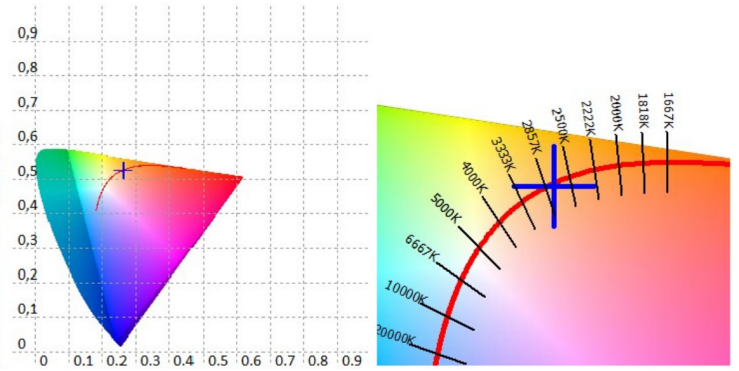
### Risalto M VariWhite +, Fresnel, Zoom max., 2.800K

Rilevazioni a 4.3 metri

CIE 1931



CIE 1976



Valori CRI, solo R1-R8 sono usati per calcolare il CRI finale

R1	R2	R3	R4	R5	R6	R7	R8	R9	R10	R11	R12	R13	R14	R15
97,8	97,3	98,3	98,0	97,0	93,0	94,8	93,1	87,3	94,9	94,2	88,0	97,0	99,0	98,4

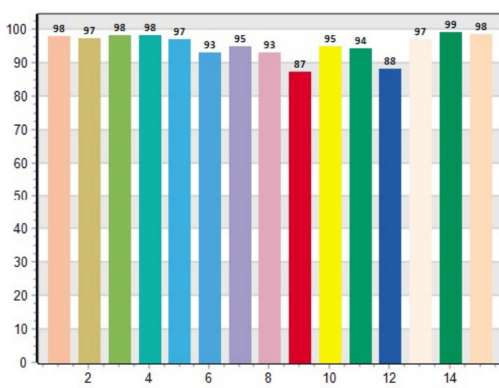
Valori TM30 C, 16 valori raggruppati su un totale di 99 valori C

C1	C2	C3	C4	C5	C6	C7	C8	C9	C10	C11	C12	C13	C14	C15	C16
94,7	97,0	95,8	93,0	95,6	96,8	94,6	95,9	93,7	93,5	93,6	90,0	90,5	90,2	92,4	89,4

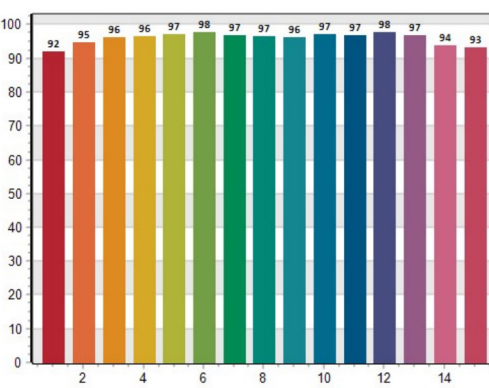
CQS Q values

Q1	Q2	Q3	Q4	Q5	Q6	Q7	Q8	Q9	Q10	Q11	Q12	Q13	Q14	Q15
92,0	94,8	96,1	96,4	97,0	97,7	96,7	96,5	96,3	97,1	96,9	97,6	96,7	93,7	93,2

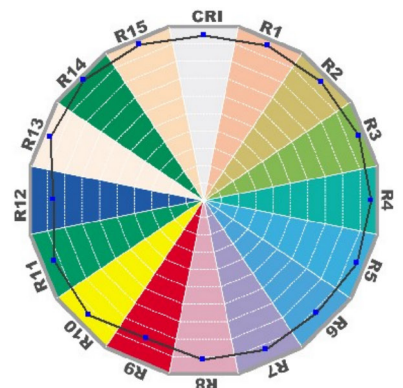
CRI: 96.15



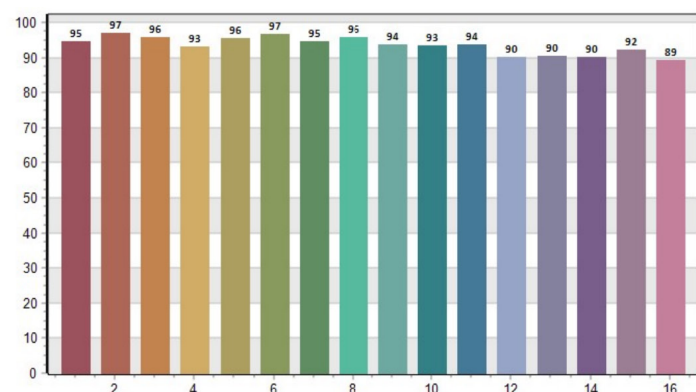
CQS: 95.30



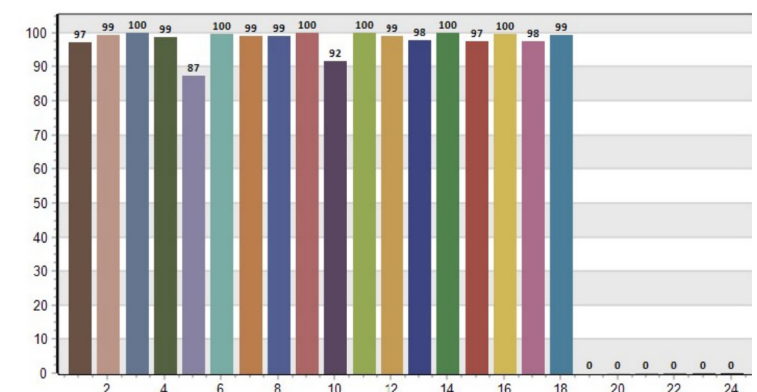
CRI-2



TM30: 94.37



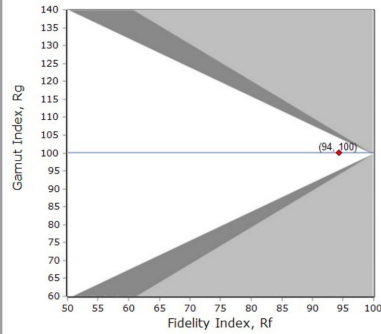
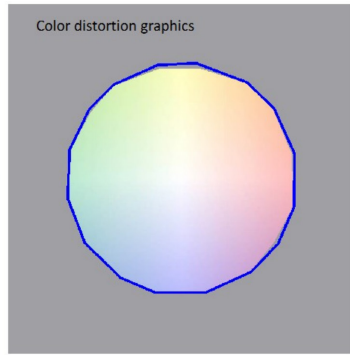
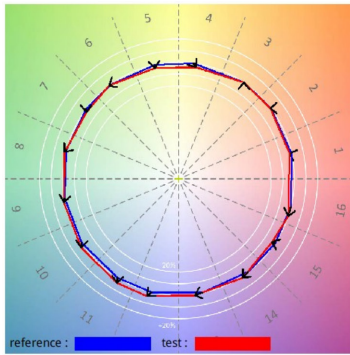
TLCI: 96.52



# Risalto M VariWhite +, Fresnel, Zoom max., 2.800K

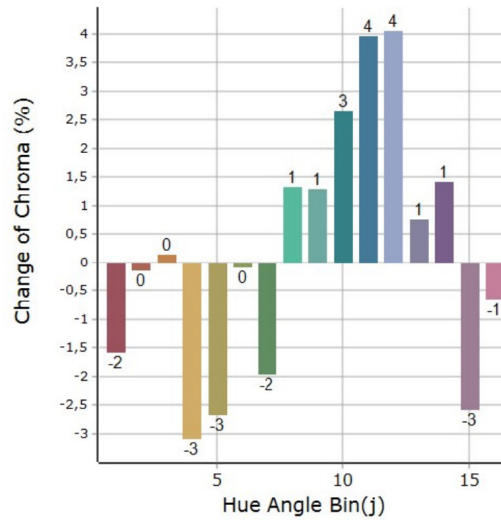
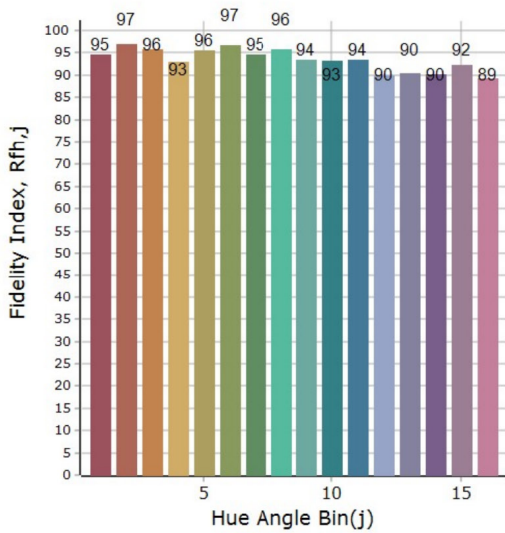
Rilevazioni a 4.3 metri

## Resa del colore generale



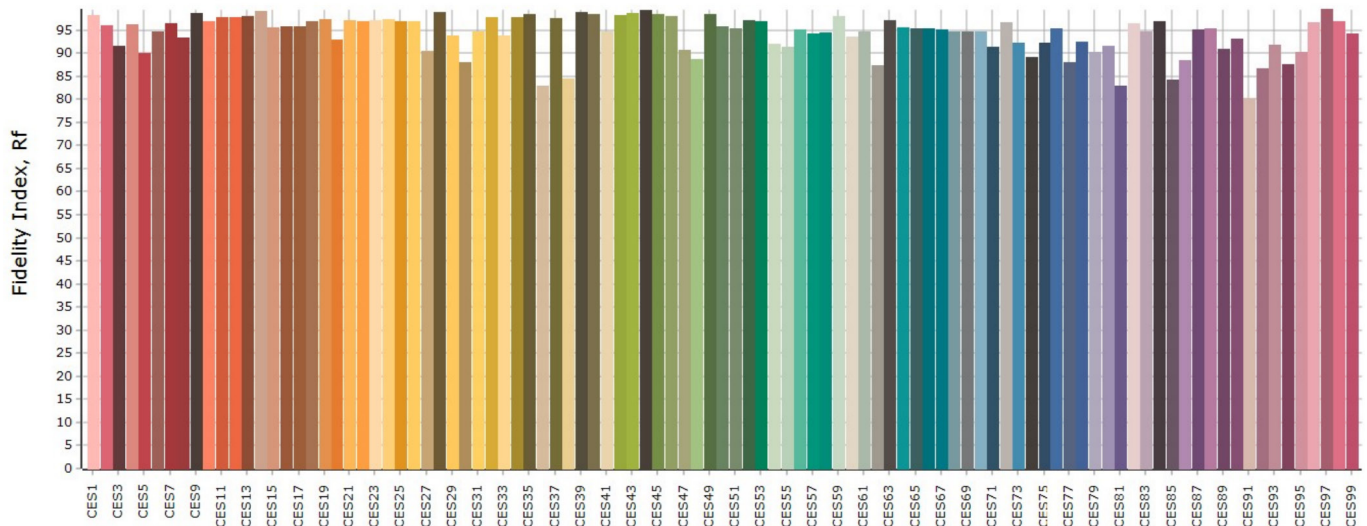
<b>Rf 94,3</b> Fidelity index Rf
<b>Rg 100,1</b> Gammut index Rg

## Resa del colore per Hue



Hue Bin	Rf	Graphic shifts (%)	
		Chroma	Hue
1	94,6	-1,6%	1,0%
2	96,9	-0,1%	0,3%
3	95,8	0,1%	-0,1%
4	93,0	-3,1%	-2,8%
5	95,6	-2,7%	0,0%
6	96,7	-0,1%	1,6%
7	94,5	-1,9%	2,4%
8	95,9	1,3%	2,1%
9	93,5	1,3%	3,2%
10	93,3	2,6%	3,1%
11	93,5	3,9%	2,2%
12	90,0	4,0%	-3,1%
13	90,4	0,8%	-6,7%
14	90,2	1,4%	-7,0%
15	92,3	-2,6%	-0,6%
16	89,3	-0,6%	-8,1%

## Fedeltà del colore per campione





**Risalto M VariWhite +, Fresnel, Zoom min., 3.200K**

Rilevazioni a 4.3 metri

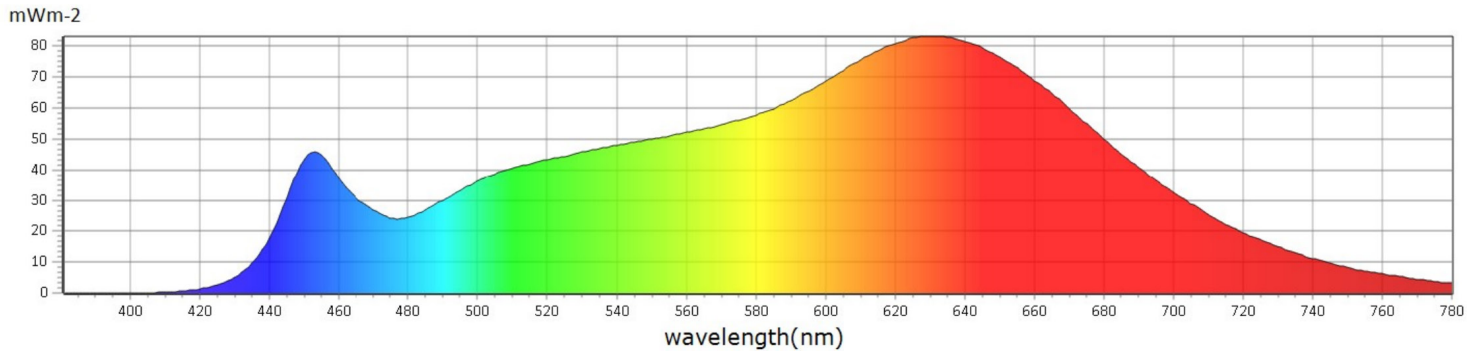
## Generale

● CCT	3125 K
● x	0,4239
● y	0,3913
● LambdaD	584 nm
● LambdaP	631 nm

## Misurazioni

CCT : 3125 K	x10 : 0,4276	delta-x : -0,0044	LambdaD : 584 nm	PPFD : 67,57 $\mu\text{molm}^{-2}\text{s}^{-1}$	S/P : 1,57	R3 : 99,0	R10 : 94,5
LUX : 3982 lx	y10 : 0,3916	delta-y : -0,0097	LambdaP : 631 nm	PFD : 73,95 $\mu\text{molm}^{-2}\text{s}^{-1}$	IRR : 14,88	R4 : 96,8	R11 : 93,4
I-Time : 3200 us	u'10 : 0,2499	delta-u' : 0,0013	Purity : 44,52%	PFD-B : 8,096 $\mu\text{molm}^{-2}\text{s}^{-1}$	CQS : 96,4	R5 : 96,2	R12 : 87,4
x : 0,4239	v'10 : 0,5150	delta-v' : -0,0046	fc : 370,1	PFD-G : 23,65 $\mu\text{molm}^{-2}\text{s}^{-1}$	CRI : 96,6	R6 : 93,6	R13 : 95,9
y : 0,3913	X : 4313,91	Duv : -0,0033	Rf : 95,1	PFD-R : 35,83 $\mu\text{molm}^{-2}\text{s}^{-1}$	TLCI : 97,7	R7 : 96,7	R14 : 98,9
u' : 0,2476	Y : 3982,03	MEL : 2513 lx	Rg : 101,8	PFD-UV : 0,0000 $\mu\text{molm}^{-2}\text{s}^{-1}$	R1 : 96,4	R8 : 97,3	R15 : 97,8
v' : 0,5143	Z : 1881,10	LambdaPV : 83,13	GAI : 66,7	PFD-FR : 6,371 $\mu\text{molm}^{-2}\text{s}^{-1}$	R2 : 96,9	R9 : 95,9	

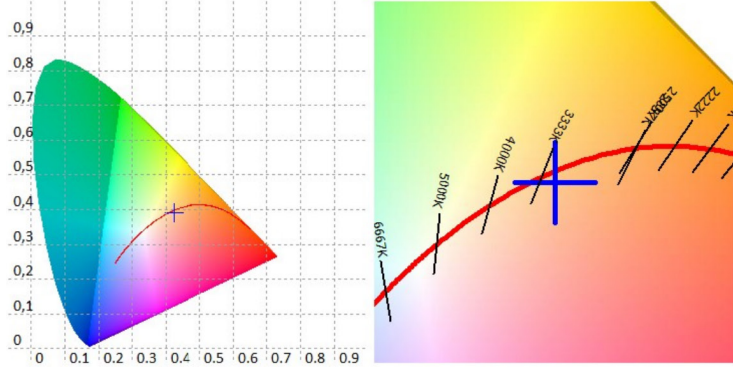
## Spectrum



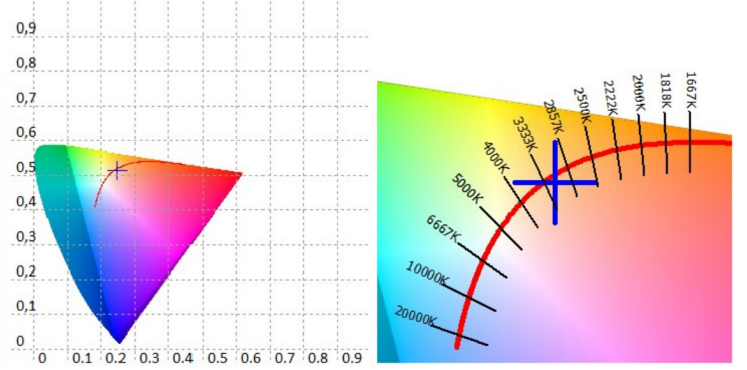
### Risalto M VariWhite +, Fresnel, Zoom min., 3.200K

Rilevazioni a 4.3 metri

CIE 1931



CIE 1976



Valori CRI, solo R1-R8 sono usati per calcolare il CRI finale

R1	R2	R3	R4	R5	R6	R7	R8	R9	R10	R11	R12	R13	R14	R15
96,4	96,9	99,0	96,8	96,2	93,6	96,7	97,3	95,9	94,5	93,4	87,4	95,9	98,9	97,8

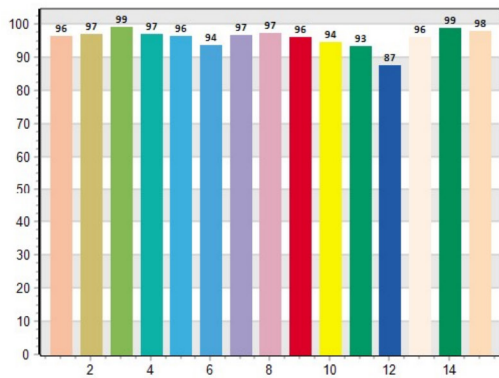
Valori TM30 C, 16 valori raggruppati su un totale di 99 valori C

C1	C2	C3	C4	C5	C6	C7	C8	C9	C10	C11	C12	C13	C14	C15	C16
96,1	97,3	95,8	95,9	94,5	96,8	93,6	96,7	94,5	94,1	93,2	90,8	93,2	91,7	92,0	89,5

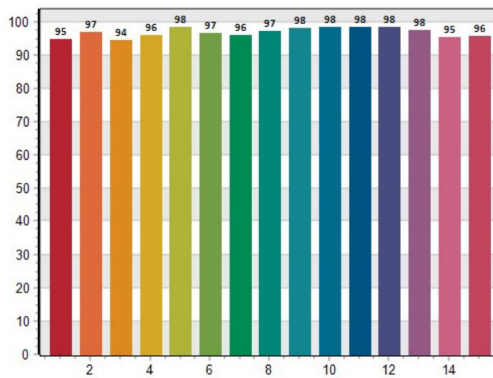
CQS Q values

Q1	Q2	Q3	Q4	Q5	Q6	Q7	Q8	Q9	Q10	Q11	Q12	Q13	Q14	Q15
94,9	96,9	94,5	96,0	98,4	96,7	96,0	97,2	98,1	98,3	98,4	98,4	97,6	95,5	95,6

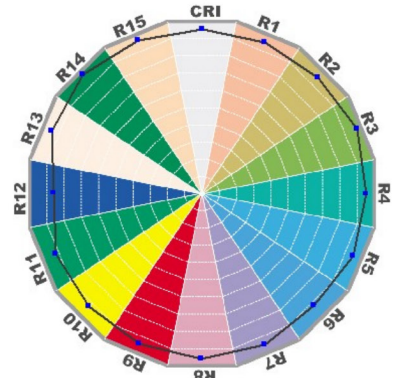
CRI: 96.62



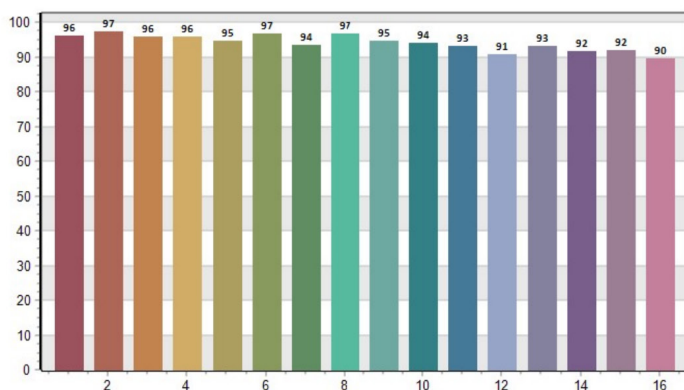
CQS: 96.39



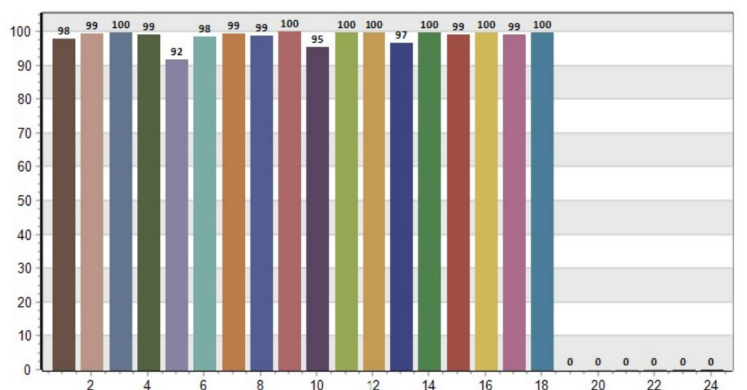
CRI-2



TM30: 95.06



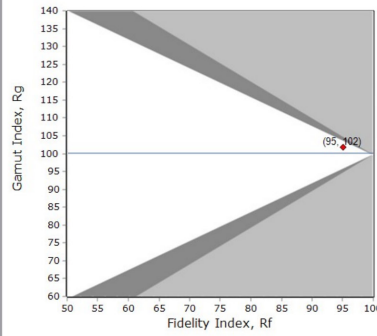
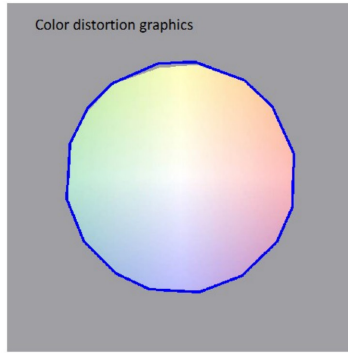
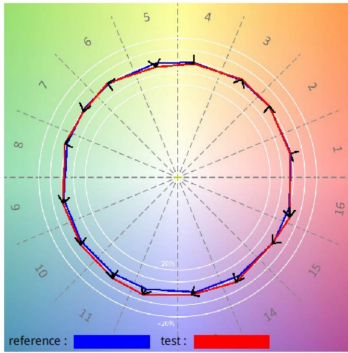
TLCI: 97.73



### Risalto M VariWhite +, Fresnel, Zoom min., 3.200K

Rilevazioni a 4.3 metri

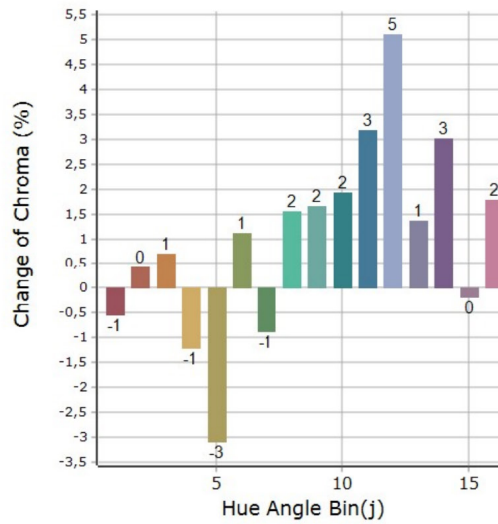
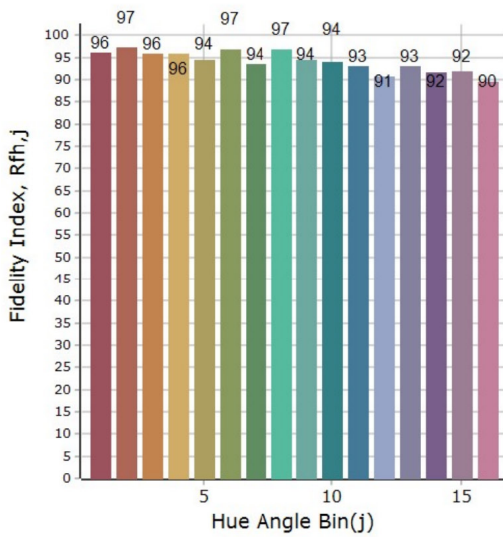
#### Resa del colore generale



**Rf 95,0**  
Fidelity index Rf

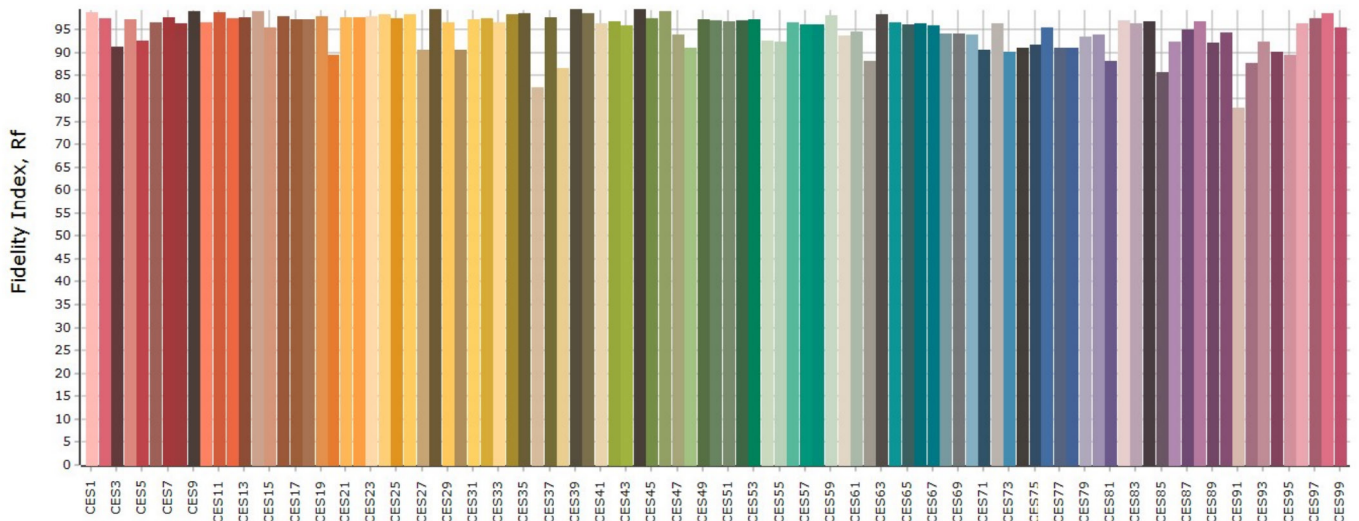
**Rg 101,8**  
Gamut index Rg

#### Resa del colore per Hue



Hue Bin	Rf	Chroma	Hue
1	96,0	-0,5%	0,6%
2	97,3	0,4%	0,1%
3	95,8	0,7%	0,2%
4	95,9	-1,2%	-1,6%
5	94,5	-3,1%	0,0%
6	96,8	1,1%	1,0%
7	93,5	-0,9%	2,2%
8	96,7	1,6%	0,8%
9	94,4	1,7%	3,6%
10	93,9	1,9%	2,7%
11	93,1	3,2%	2,9%
12	90,7	5,1%	-2,0%
13	93,2	1,4%	-4,5%
14	91,6	3,0%	-5,0%
15	91,9	-0,2%	-2,1%
16	89,5	1,8%	-8,4%

#### Fedeltà del colore per campione



**Risalto M VariWhite +, Fresnel, Zoom max., 3.200K**

Rilevazioni a 4.3 metri

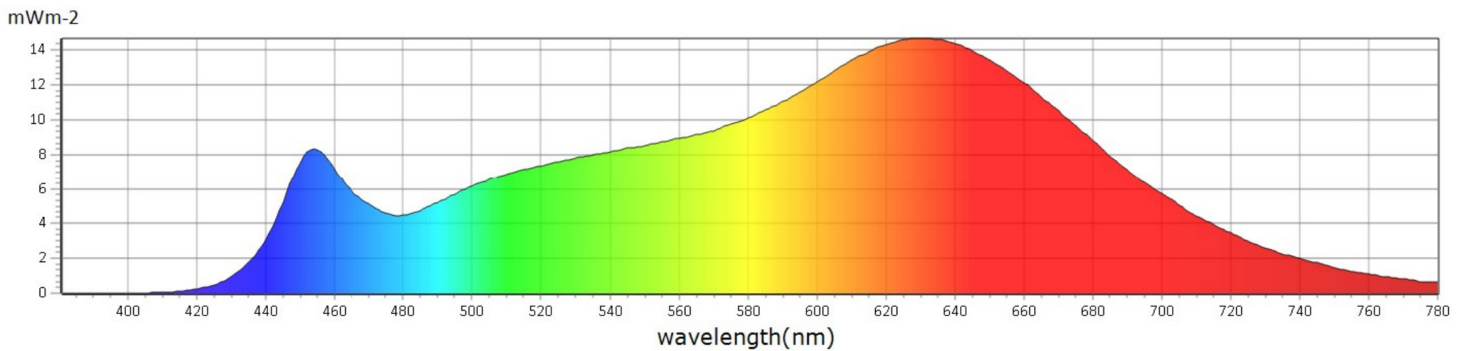
## Generale

● CCT	3081 K
● x	0,4238
● y	0,3861
● LambdaD	585 nm
● LambdaP	628 nm

## Misurazioni

CCT : 3081 K	x10 : 0,4271	delta-x : -0,0075	LambdaD : 585 nm	PPFD : 11,86 $\mu\text{molm}^{-2}\text{s}^{-1}$	S/P : 1,58	R3 : 97,5	R10 : 91,4
LUX : 692,3 lx	y10 : 0,3868	delta-y : -0,0160	LambdaP : 628 nm	PFD : 12,99 $\mu\text{molm}^{-2}\text{s}^{-1}$	IRR : 2,615	R4 : 96,8	R11 : 93,0
I-Time : 18000 us	u'10 : 0,2517	delta-u' : 0,0020	Purity : 42,98%	PFD-B : 1,463 $\mu\text{molm}^{-2}\text{s}^{-1}$	CQS : 95,8	R5 : 95,0	R12 : 85,2
x : 0,4238	v'10 : 0,5129	delta-v' : -0,0077	fc : 64,34	PFD-G : 4,083 $\mu\text{molm}^{-2}\text{s}^{-1}$	CRI : 95,4	R6 : 91,3	R13 : 94,6
y : 0,3861	X : 759,87	Duv : -0,0055	Rf : 94,7	PFD-R : 6,316 $\mu\text{molm}^{-2}\text{s}^{-1}$	TLCI : 97,3	R7 : 95,3	R14 : 99,0
u' : 0,2498	Y : 692,26	MEL : 441,3 lx	Rg : 102,3	PFD-UV : 0,0002 $\mu\text{molm}^{-2}\text{s}^{-1}$	R1 : 95,5	R8 : 96,6	R15 : 96,9
v' : 0,5121	Z : 340,87	LambdaPV : 14,68	GAI : 69,1	PFD-FR : 1,125 $\mu\text{molm}^{-2}\text{s}^{-1}$	R2 : 95,4	R9 : 95,9	

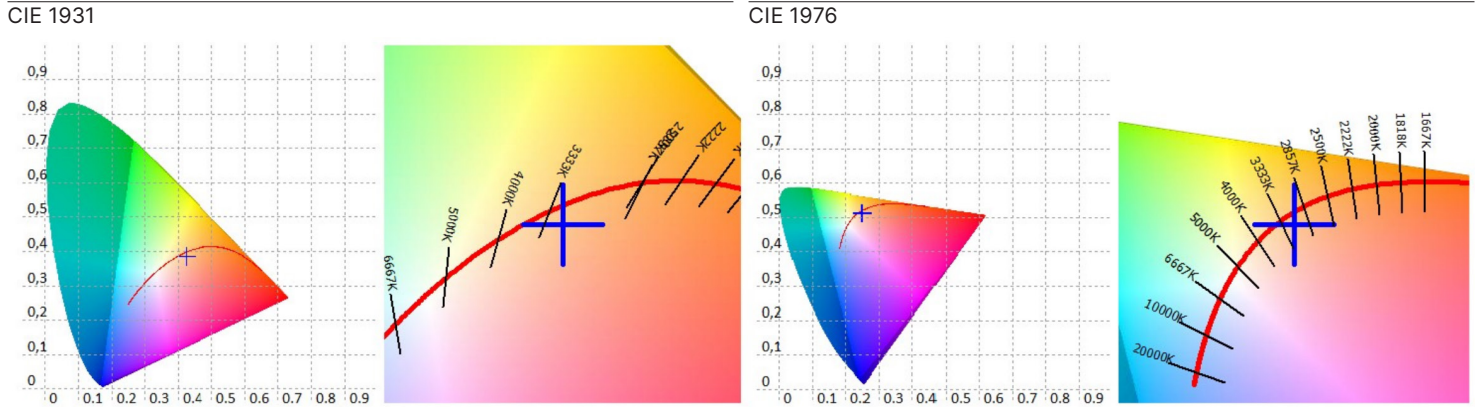
## Spectrum





# Risalto M VariWhite +, Fresnel, Zoom max., 3.200K

Rilevazioni a 4.3 metri



Valori CRI, solo R1-R8 sono usati per calcolare il CRI finale

R1	R2	R3	R4	R5	R6	R7	R8	R9	R10	R11	R12	R13	R14	R15
95,5	95,4	97,5	96,8	95,0	91,3	95,3	96,6	95,9	91,4	93,0	85,2	94,6	99,0	96,9

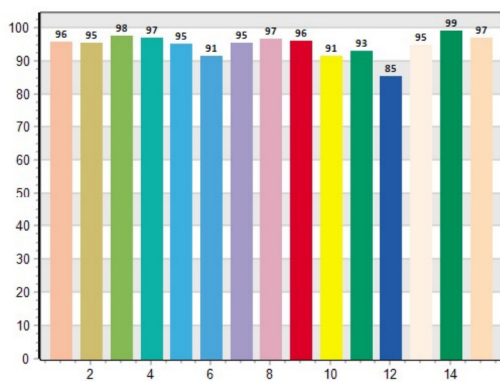
Valori TM30 C, 16 valori raggruppati su un totale di 99 valori C

C1	C2	C3	C4	C5	C6	C7	C8	C9	C10	C11	C12	C13	C14	C15	C16
95,7	96,7	95,3	95,9	94,3	96,1	93,2	96,6	94,1	93,8	93,0	90,1	92,4	91,1	91,7	89,4

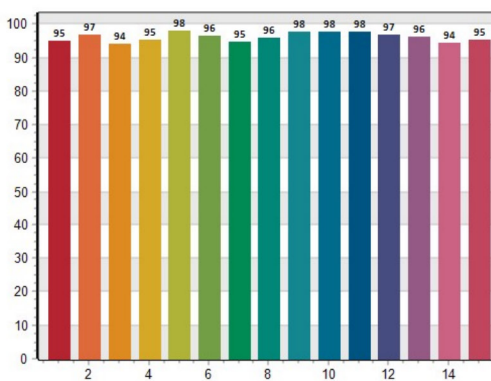
CQS Q values

Q1	Q2	Q3	Q4	Q5	Q6	Q7	Q8	Q9	Q10	Q11	Q12	Q13	Q14	Q15
94,9	96,7	94,1	95,5	98,0	96,4	94,9	96,0	97,6	97,8	97,6	96,9	96,1	94,4	95,2

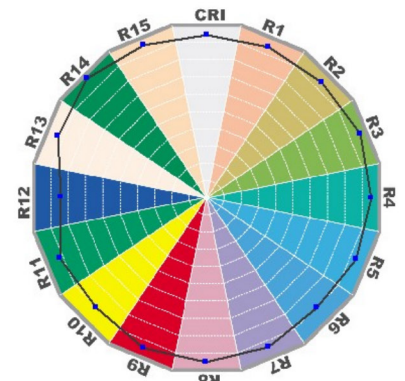
CRI: 95.42



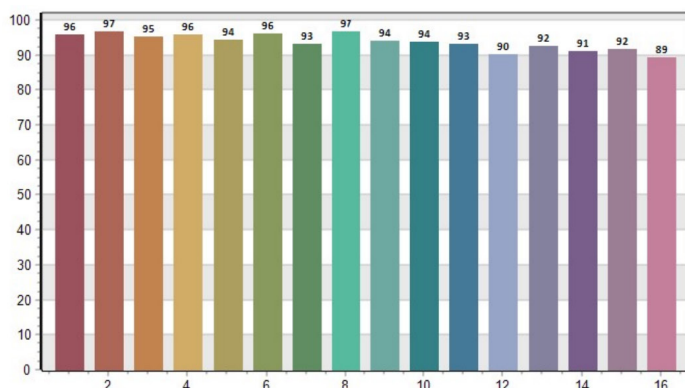
CQS: 95.84



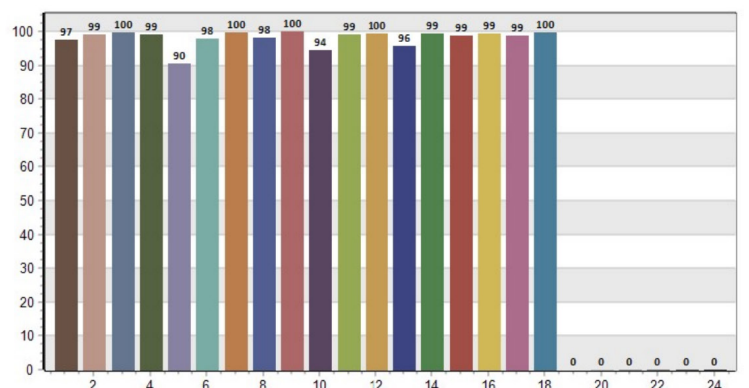
CRI-2



TM30: 94.74



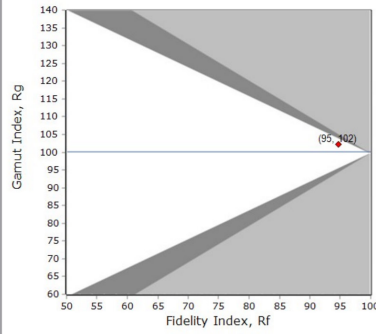
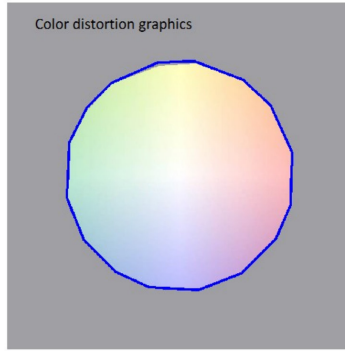
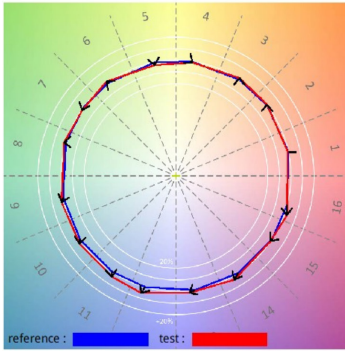
TLCI: 97.27



# Risalto M VariWhite +, Fresnel, Zoom max., 3.200K

Rilevazioni a 4.3 metri

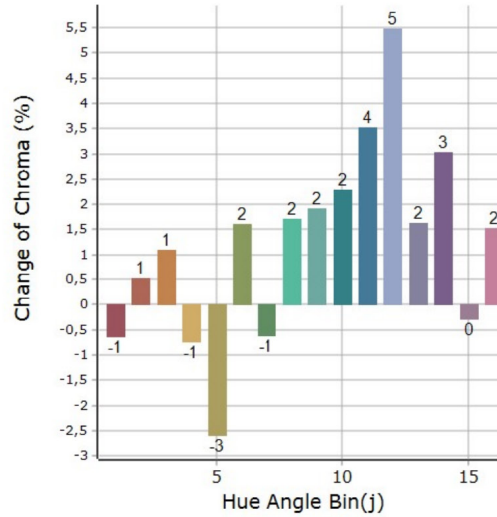
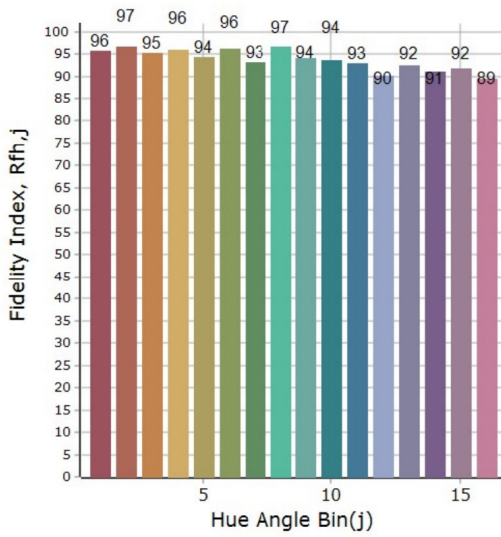
## Resa del colore generale



**Rf 94,7**  
Fidelity index Rf

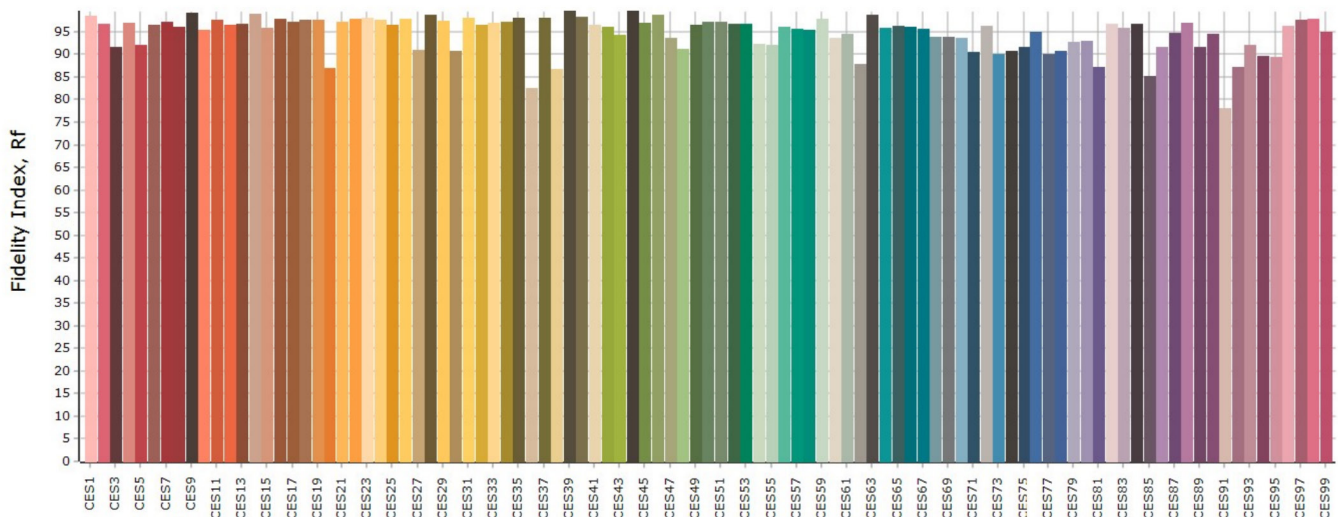
**Rg 102,3**  
Gamut index Rg

## Resa del colore per Hue



Hue Bin	Rf	Graphic shifts (%)	
		Chroma	Hue
1	95,7	-0,6%	0,8%
2	96,6	0,5%	0,5%
3	95,3	1,1%	0,7%
4	95,9	-0,7%	-1,5%
5	94,2	-2,6%	-0,1%
6	96,1	1,6%	0,7%
7	93,2	-0,6%	2,0%
8	96,6	1,7%	0,5%
9	94,1	1,9%	3,6%
10	93,6	2,3%	2,6%
11	92,9	3,5%	2,6%
12	90,0	5,5%	-2,4%
13	92,4	1,6%	-5,0%
14	91,1	3,0%	-5,5%
15	91,7	-0,3%	-2,4%
16	89,4	1,5%	-8,5%

## Fedeltà del colore per campione



**Risalto M VariWhite +, Fresnel, Zoom min., 4.000K**

Rilevazioni a 4.3 metri

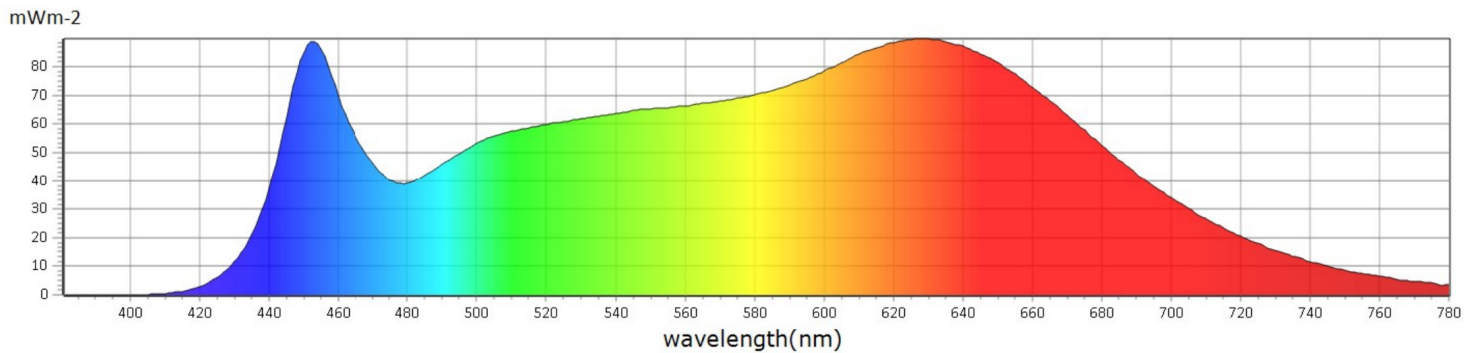
## Generale

● CCT	3863 K
● x	0,3819
● y	0,3646
● LambdaD	584 nm
● LambdaP	627 nm

## Misurazioni

CCT : 3863 K	x10 : 0,3846	delta-x : -0,0048	LambdaD : 584 nm	PPFD : 83,09 $\mu\text{molm}^{-2}\text{s}^{-1}$	S/P : 1,86	R3 : 98,8	R10 : 93,0
LUX : 4964 lx	y10 : 0,3662	delta-y : -0,0160	LambdaP : 627 nm	PFD : 89,75 $\mu\text{molm}^{-2}\text{s}^{-1}$	IRR : 18,50	R4 : 96,3	R11 : 93,2
I-Time : 2400 us	u'10 : 0,2322	delta-u' : 0,0034	Purity : 23,91%	PFD-B : 14,36 $\mu\text{molm}^{-2}\text{s}^{-1}$	CQS : 96,9	R5 : 95,2	R12 : 83,7
x : 0,3819	v'10 : 0,4975	delta-v' : -0,0079	fc : 461,3	PFD-G : 30,26 $\mu\text{molm}^{-2}\text{s}^{-1}$	CRI : 96,3	R6 : 93,2	R13 : 94,4
y : 0,3646	X : 5199,21	Duv : -0,0062	Rf : 94,3	PFD-R : 38,47 $\mu\text{molm}^{-2}\text{s}^{-1}$	TLCI : 97,9	R7 : 97,7	R14 : 98,6
u' : 0,2310	Y : 4963,99	MEL : 3887 lx	Rg : 102,5	PFD-UV : 0,0012 $\mu\text{molm}^{-2}\text{s}^{-1}$	R1 : 94,7	R8 : 98,3	R15 : 94,1
v' : 0,4963	Z : 3451,67	LambdaPV : 89,86	GAI : 85,3	PFD-FR : 6,664 $\mu\text{molm}^{-2}\text{s}^{-1}$	R2 : 96,0	R9 : 93,3	

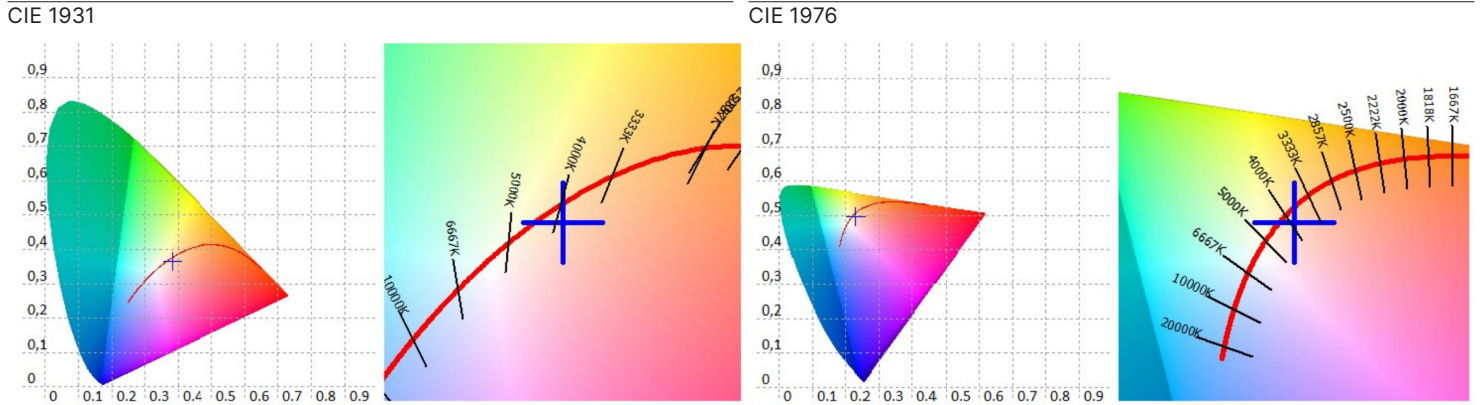
## Spectrum





# Risalto M VariWhite +, Fresnel, Zoom min., 4.000K

Rilevazioni a 4.3 metri



Valori CRI, solo R1-R8 sono usati per calcolare il CRI finale

R1	R2	R3	R4	R5	R6	R7	R8	R9	R10	R11	R12	R13	R14	R15
94,7	96,0	98,8	96,3	95,2	93,2	97,7	98,3	93,3	93,0	93,2	83,7	94,4	98,6	94,1

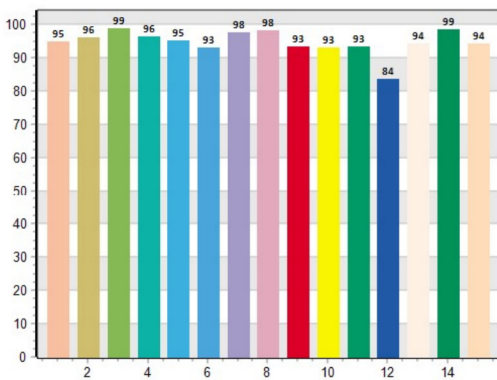
Valori TM30 C, 16 valori raggruppati su un totale di 99 valori C

C1	C2	C3	C4	C5	C6	C7	C8	C9	C10	C11	C12	C13	C14	C15	C16
95,4	96,0	96,1	95,3	94,0	96,4	95,3	93,6	92,2	93,6	89,5	91,0	95,3	90,9	91,6	90,0

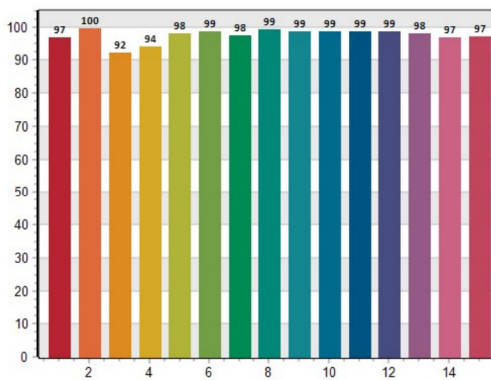
CQS Q values

Q1	Q2	Q3	Q4	Q5	Q6	Q7	Q8	Q9	Q10	Q11	Q12	Q13	Q14	Q15
96,9	99,6	92,4	94,0	98,1	98,7	97,6	99,2	98,7	98,5	98,6	98,6	98,1	96,7	97,1

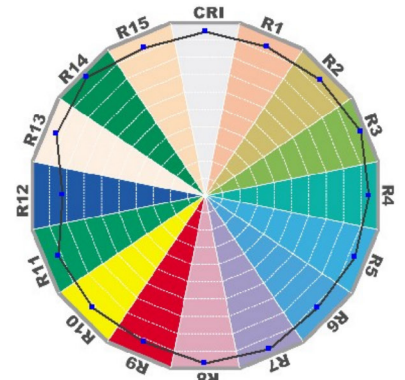
CRI: 96.25



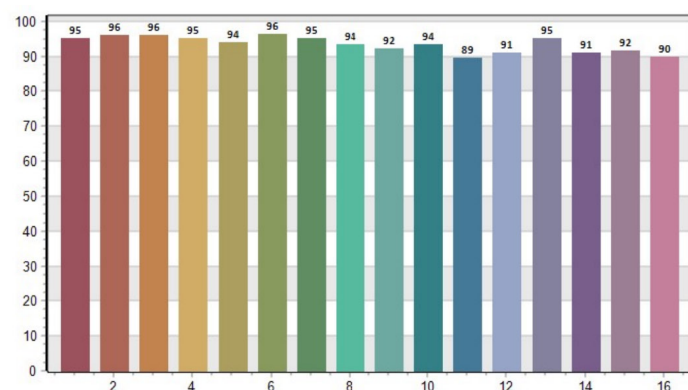
CQS: 96.88



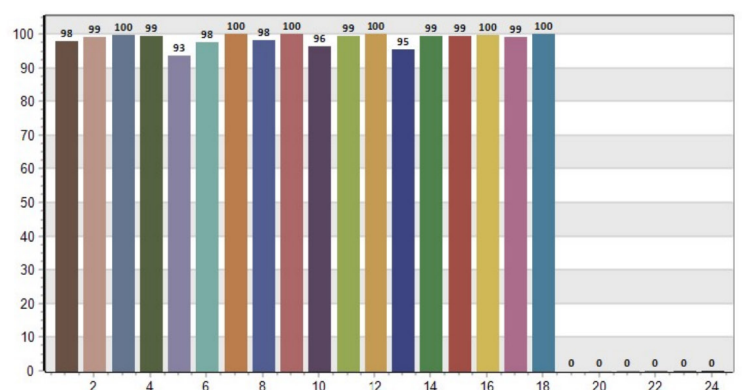
CRI-2



TM30: 94.34



TLCI: 97.87

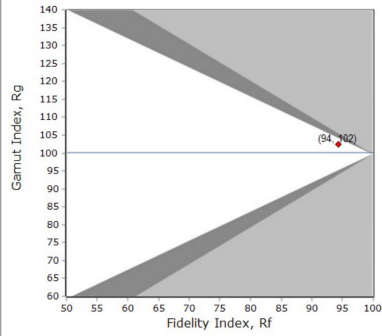
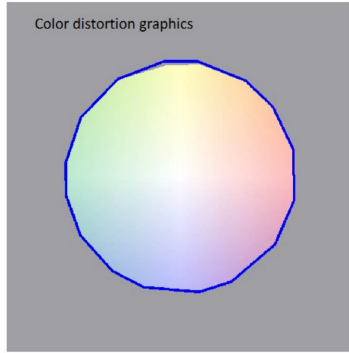
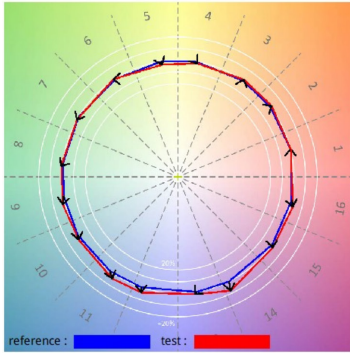




# Risalto M VariWhite +, Fresnel, Zoom min., 4.000K

Rilevazioni a 4.3 metri

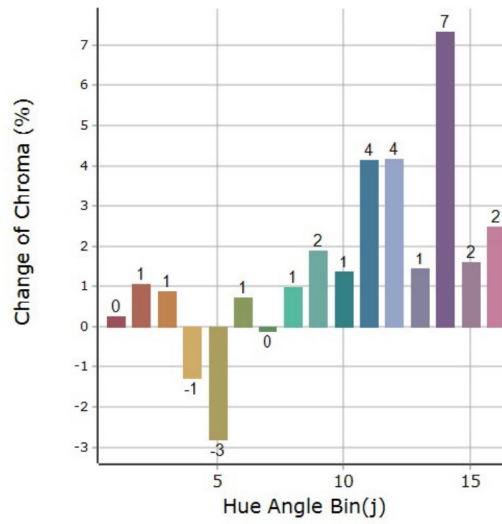
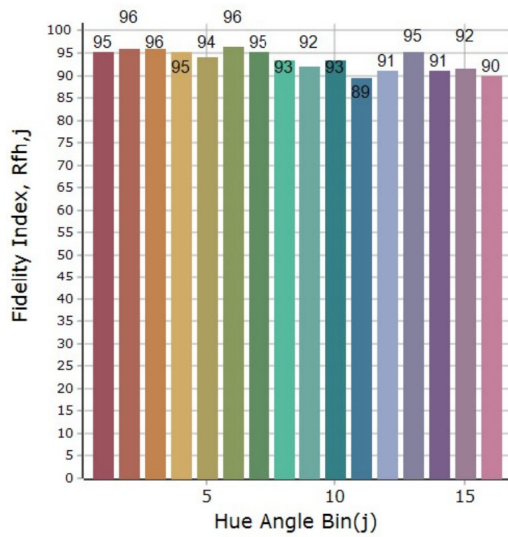
## Resa del colore generale



**Rf 94,3**  
Fidelity index Rf

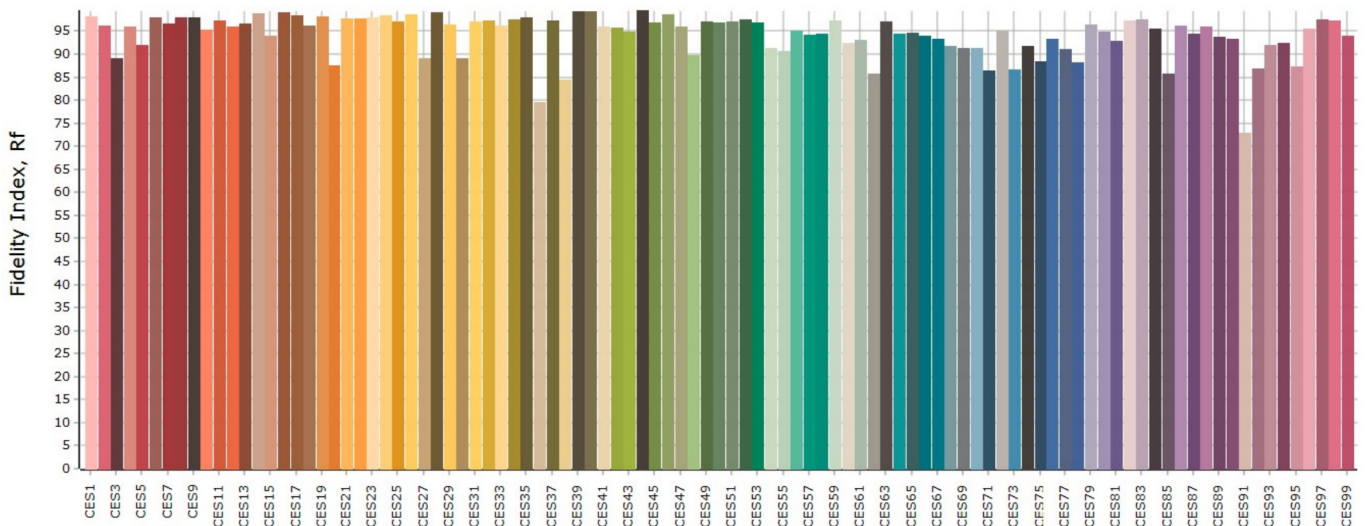
**Rg 102,4**  
Gamut index Rg

## Resa del colore per Hue



Hue Bin	Rf	Graphic shifts (%)	
		Chroma	Hue
1	95,3	0,2%	0,5%
2	95,9	1,0%	0,1%
3	96,0	0,9%	0,4%
4	95,2	-1,3%	-1,3%
5	94,0	-2,8%	-0,6%
6	96,4	0,7%	1,1%
7	95,2	-0,1%	2,1%
8	93,4	1,0%	2,6%
9	92,0	1,9%	6,8%
10	93,5	1,4%	3,4%
11	89,4	4,2%	5,1%
12	90,9	4,2%	0,8%
13	95,3	1,4%	-2,4%
14	90,9	7,3%	-3,1%
15	91,5	1,6%	-1,8%
16	90,0	2,5%	-5,2%

## Fedeltà del colore per campione



**Risalto M VariWhite +, Fresnel, Zoom max., 4.000K**

Rilevazioni a 4.3 metri

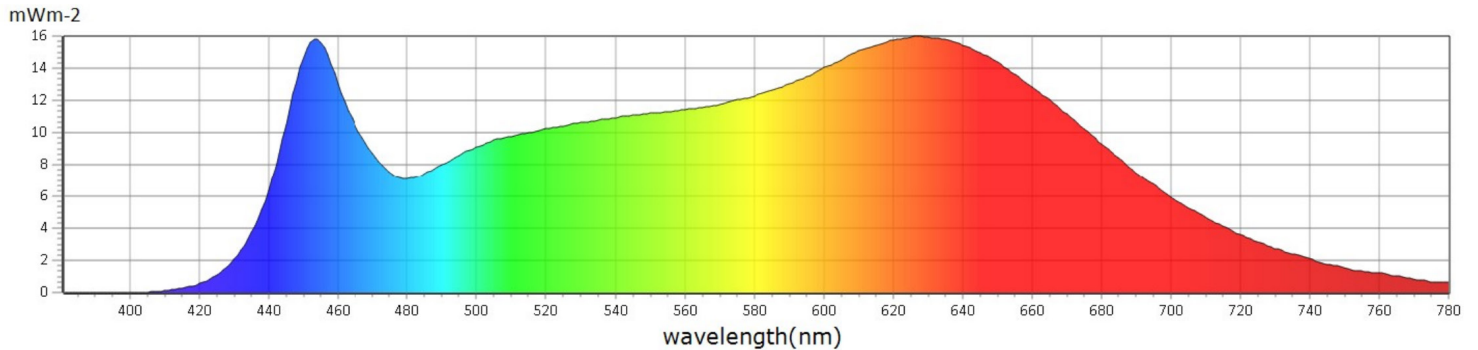
## Generale

● CCT	3809 K
● x	0,3826
● y	0,3605
● LambdaD	585 nm
● LambdaP	626 nm

## Misurazioni

CCT : 3809 K	x10 : 0,3850	delta-x : -0,0067	LambdaD : 585 nm	PPFD : 14,62 $\mu\text{molm}^{-2}\text{s}^{-1}$	S/P : 1,86	R3 : 98,1	R10 : 89,7
LUX : 864,8 lx	y10 : 0,3625	delta-y : -0,0216	LambdaP : 626 nm	PFD : 15,80 $\mu\text{molm}^{-2}\text{s}^{-1}$	IRR : 3,256	R4 : 95,7	R11 : 92,5
I-Time : 12000 us	u'10 : 0,2340	delta-u' : 0,0045	Purity : 23,08%	PFD-B : 2,565 $\mu\text{molm}^{-2}\text{s}^{-1}$	CQS : 96,6	R5 : 93,6	R12 : 82,6
x : 0,3826	v'10 : 0,4958	delta-v' : -0,0107	fc : 80,37	PFD-G : 5,236 $\mu\text{molm}^{-2}\text{s}^{-1}$	CRI : 95,1	R6 : 91,0	R13 : 92,7
y : 0,3605	X : 917,74	Duv : -0,0084	Rf : 94,0	PFD-R : 6,818 $\mu\text{molm}^{-2}\text{s}^{-1}$	TLCI : 97,7	R7 : 96,6	R14 : 98,7
u' : 0,2332	Y : 864,78	MEL : 682,2 lx	Rg : 102,7	PFD-UV : 0,0003 $\mu\text{molm}^{-2}\text{s}^{-1}$	R1 : 93,3	R8 : 97,8	R15 : 92,5
v' : 0,4945	Z : 616,34	LambdaPV : 16,00	GAI : 87,1	PFD-FR : 1,179 $\mu\text{molm}^{-2}\text{s}^{-1}$	R2 : 94,3	R9 : 91,3	

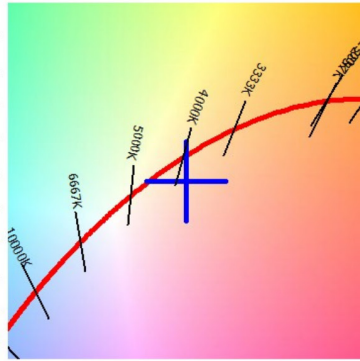
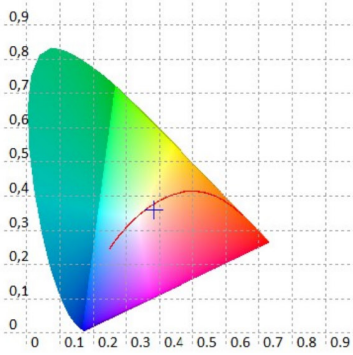
## Spectrum



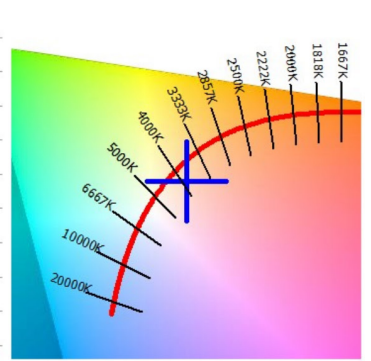
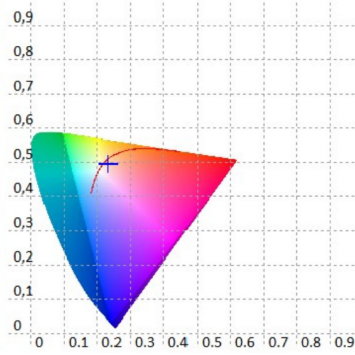
### Risalto M VariWhite +, Fresnel, Zoom max., 4.000K

Rilevazioni a 4.3 metri

CIE 1931



CIE 1976



Valori CRI, solo R1-R8 sono usati per calcolare il CRI finale

R1	R2	R3	R4	R5	R6	R7	R8	R9	R10	R11	R12	R13	R14	R15
93,3	94,3	98,1	95,7	93,6	91,0	96,6	97,8	91,3	89,7	92,5	82,6	92,7	98,7	92,5

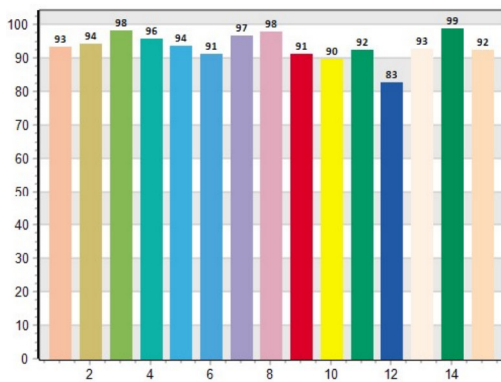
Valori TM30 C, 16 valori raggruppati su un totale di 99 valori C

C1	C2	C3	C4	C5	C6	C7	C8	C9	C10	C11	C12	C13	C14	C15	C16
94,9	95,2	95,5	95,0	93,9	96,1	94,9	92,7	91,5	93,3	89,5	90,7	94,8	92,1	91,4	89,8

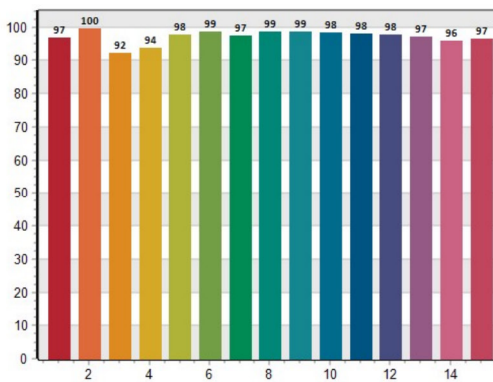
CQS Q values

Q1	Q2	Q3	Q4	Q5	Q6	Q7	Q8	Q9	Q10	Q11	Q12	Q13	Q14	Q15
96,9	99,6	92,2	93,8	97,8	98,7	97,4	98,8	98,7	98,4	98,1	97,7	97,1	95,9	96,6

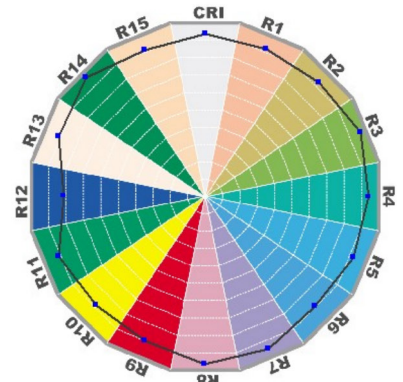
CRI: 95.05



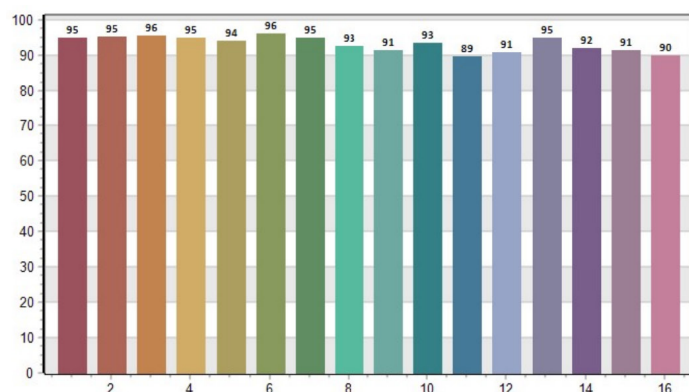
CQS: 96.60



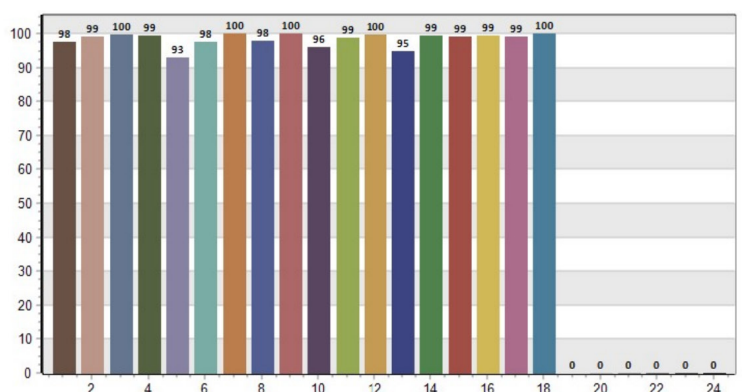
CRI-2



TM30: 94.03



TLCI: 97.67

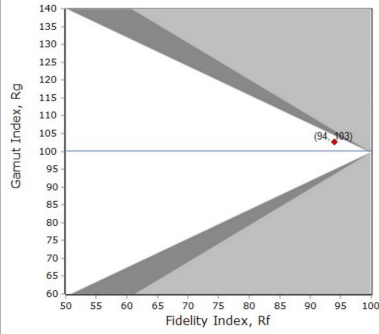
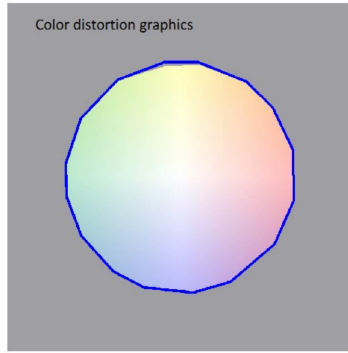
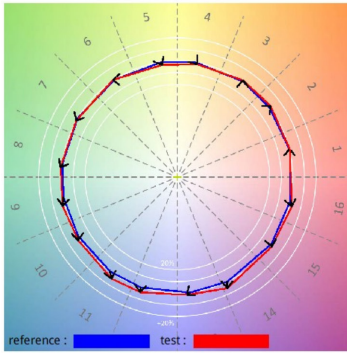




# Risalto M VariWhite +, Fresnel, Zoom max., 4.000K

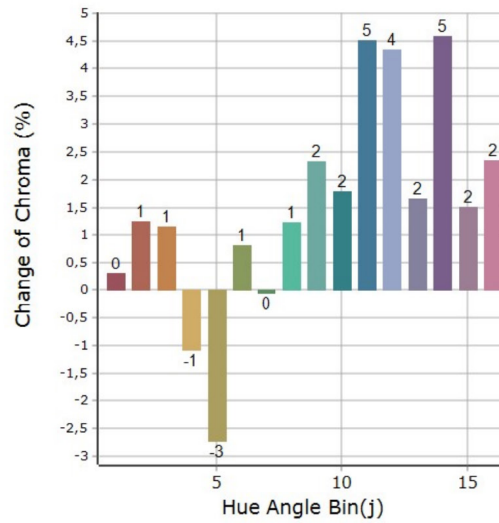
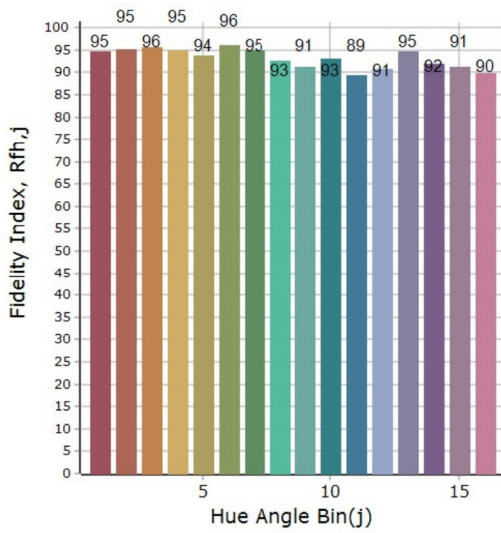
Rilevazioni a 4.3 metri

## Resa del colore generale



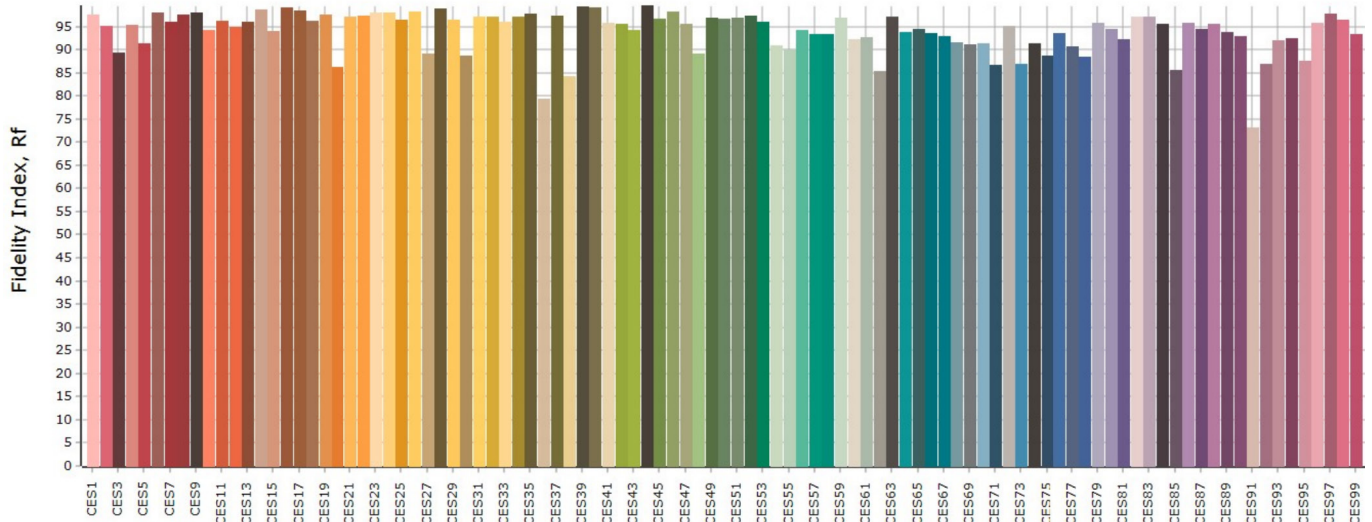
<b>Rf 94,0</b> Fidelity index Rf
<b>Rg 102,6</b> Gamut index Rg

## Resa del colore per Hue



Hue Bin	Rf	Graphic shifts (%)	
		Chroma	Hue
1	94,8	0,3%	0,8%
2	95,1	1,2%	0,4%
3	95,5	1,2%	0,5%
4	94,9	-1,1%	-1,4%
5	93,8	-2,7%	-0,8%
6	96,1	0,8%	1,1%
7	94,9	0,0%	2,2%
8	92,6	1,2%	2,9%
9	91,3	2,3%	7,2%
10	93,2	1,8%	3,4%
11	89,4	4,5%	4,8%
12	90,7	4,3%	0,4%
13	94,7	1,7%	-2,9%
14	92,0	4,6%	-3,0%
15	91,3	1,5%	-1,7%
16	89,8	2,4%	-4,9%

## Fedeltà del colore per campione



**Risalto M VariWhite +, Fresnel, Zoom min., 5.600K**

Rilevazioni a 4.3 metri

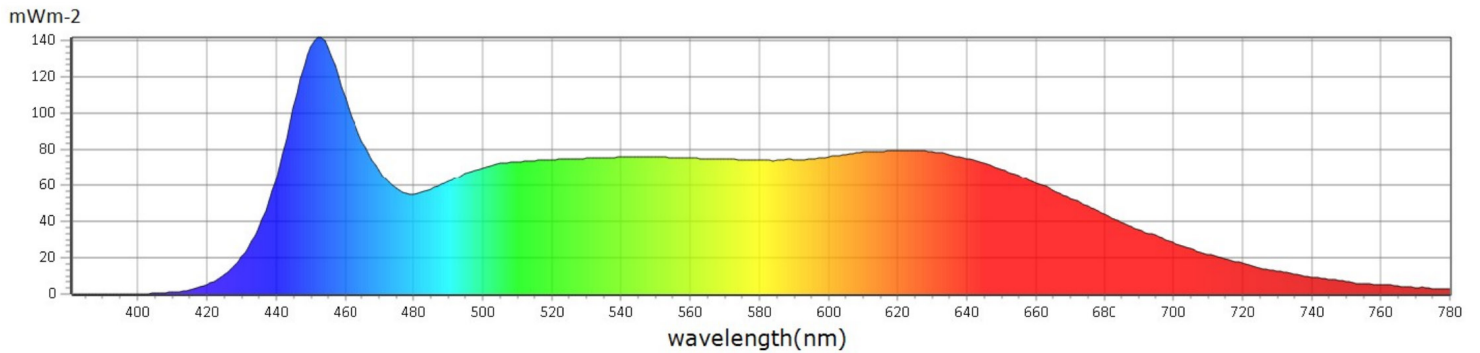
## Generale

● CCT	5362 K
● x	0,3354
● y	0,3357
● LambdaD	576 nm
● LambdaP	451 nm

## Misurazioni

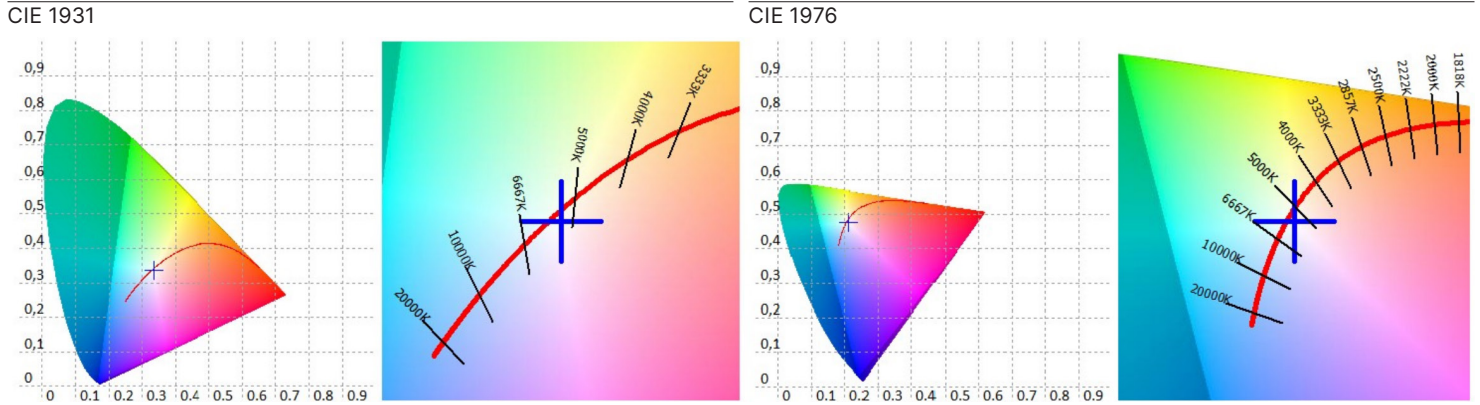
CCT : 5362 K	x10 : 0,3378	delta-x : -0,0003	LambdaD : 576 nm	PPFD : 89,47 $\mu\text{molm}^{-2}\text{s}^{-1}$	S/P : 2,23	R3 : 97,4	R10 : 95,9
LUX : 5445 lx	y10 : 0,3390	delta-y : -0,0082	LambdaP : 451 nm	PFD : 94,88 $\mu\text{molm}^{-2}\text{s}^{-1}$	IRR : 20,20	R4 : 96,7	R11 : 94,1
I-Time : 1400 us	u'10 : 0,2114	delta-u' : 0,0030	Purity : 1,33%	PFD-B : 21,72 $\mu\text{molm}^{-2}\text{s}^{-1}$	CQS : 95,2	R5 : 96,3	R12 : 81,8
x : 0,3354	v'10 : 0,4773	delta-v' : -0,0042	fc : 506,0	PFD-G : 34,32 $\mu\text{molm}^{-2}\text{s}^{-1}$	CRI : 96,7	R6 : 93,9	R13 : 95,5
y : 0,3357	X : 5440,04	Duv : -0,0041	Rf : 93,8	PFD-R : 33,43 $\mu\text{molm}^{-2}\text{s}^{-1}$	TLCI : 98,4	R7 : 98,1	R14 : 98,1
u' : 0,2110	Y : 5445,07	MEL : 5325 lx	Rg : 102,3	PFD-UV : 0,0024 $\mu\text{molm}^{-2}\text{s}^{-1}$	R1 : 95,5	R8 : 98,7	R15 : 94,6
v' : 0,4752	Z : 5335,12	LambdaPV : 141,6	GAI : 97,6	PFD-FR : 5,416 $\mu\text{molm}^{-2}\text{s}^{-1}$	R2 : 97,1	R9 : 93,8	

## Spectrum



# Risalto M VariWhite +, Fresnel, Zoom min., 5.600K

Rilevazioni a 4.3 metri



Valori CRI, solo R1-R8 sono usati per calcolare il CRI finale

R1	R2	R3	R4	R5	R6	R7	R8	R9	R10	R11	R12	R13	R14	R15
95,5	97,1	97,4	96,7	96,3	93,9	98,1	98,7	93,8	95,9	94,1	81,8	95,5	98,1	94,6

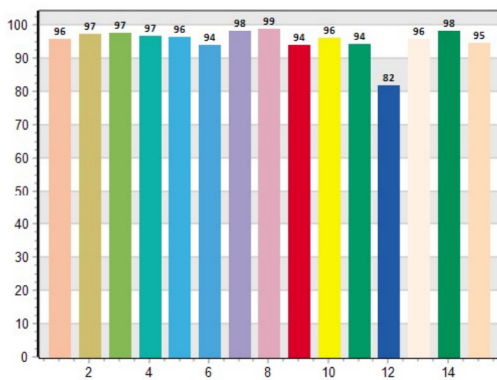
Valori TM30 C, 16 valori raggruppati su un totale di 99 valori C

C1	C2	C3	C4	C5	C6	C7	C8	C9	C10	C11	C12	C13	C14	C15	C16
94,3	95,7	94,6	94,8	94,0	96,3	95,6	93,1	92,1	89,6	86,4	95,0	94,2	94,1	86,4	94,4

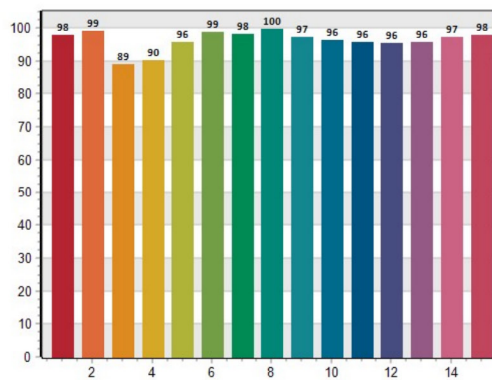
CQS Q values

Q1	Q2	Q3	Q4	Q5	Q6	Q7	Q8	Q9	Q10	Q11	Q12	Q13	Q14	Q15
97,8	99,1	89,0	90,0	95,8	98,7	98,0	99,6	97,1	96,3	95,7	95,5	95,7	97,3	97,8

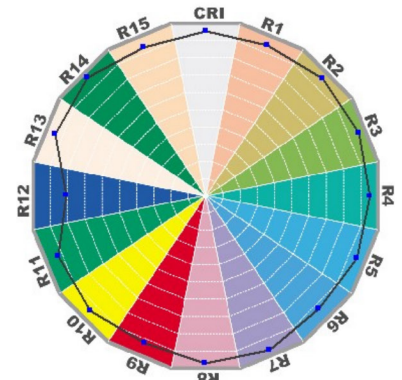
CRI: 96.71



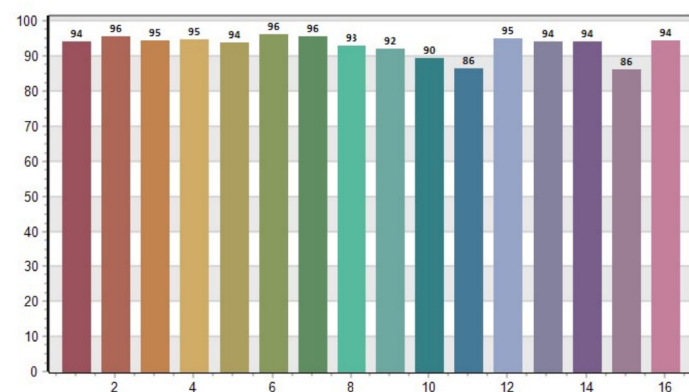
CQS: 95.23



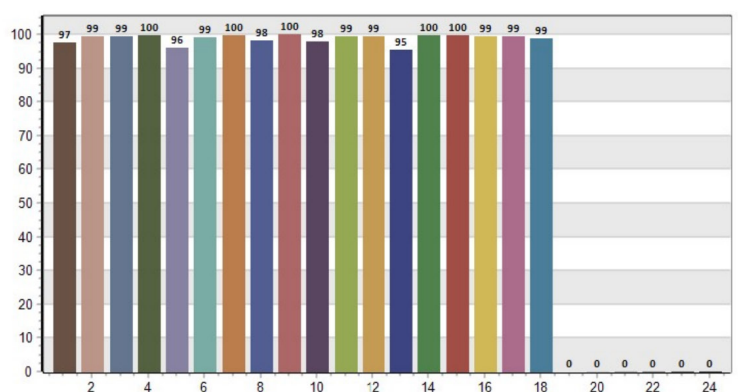
CRI-2



TM30: 93.81



TLCI: 98.39

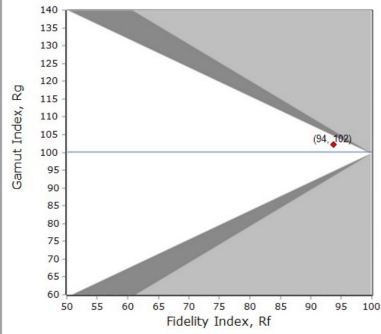
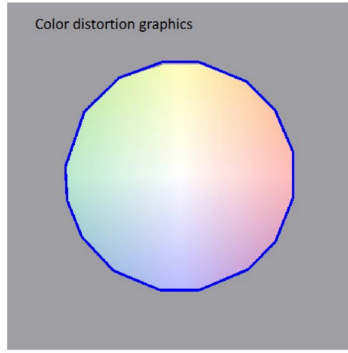
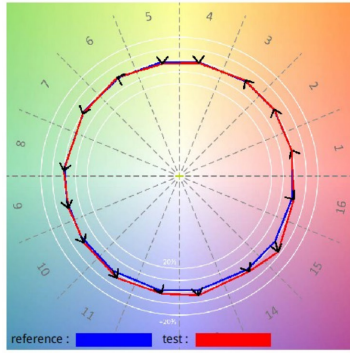




# Risalto M VariWhite +, Fresnel, Zoom min., 5.600K

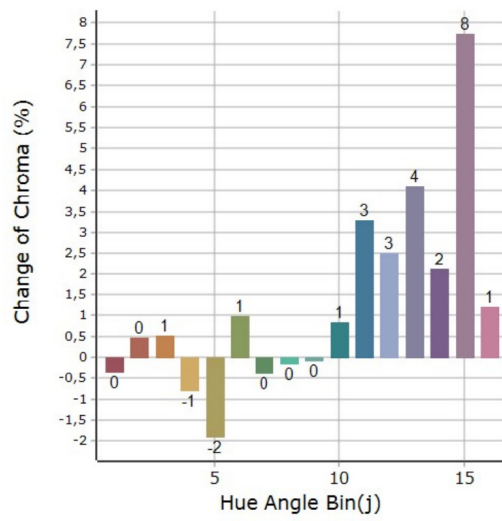
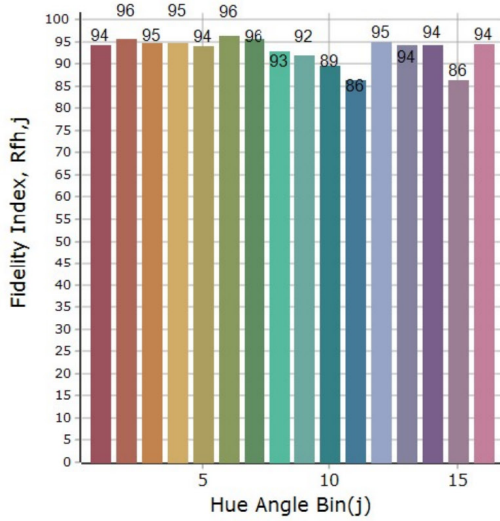
Rilevazioni a 4.3 metri

## Resa del colore generale



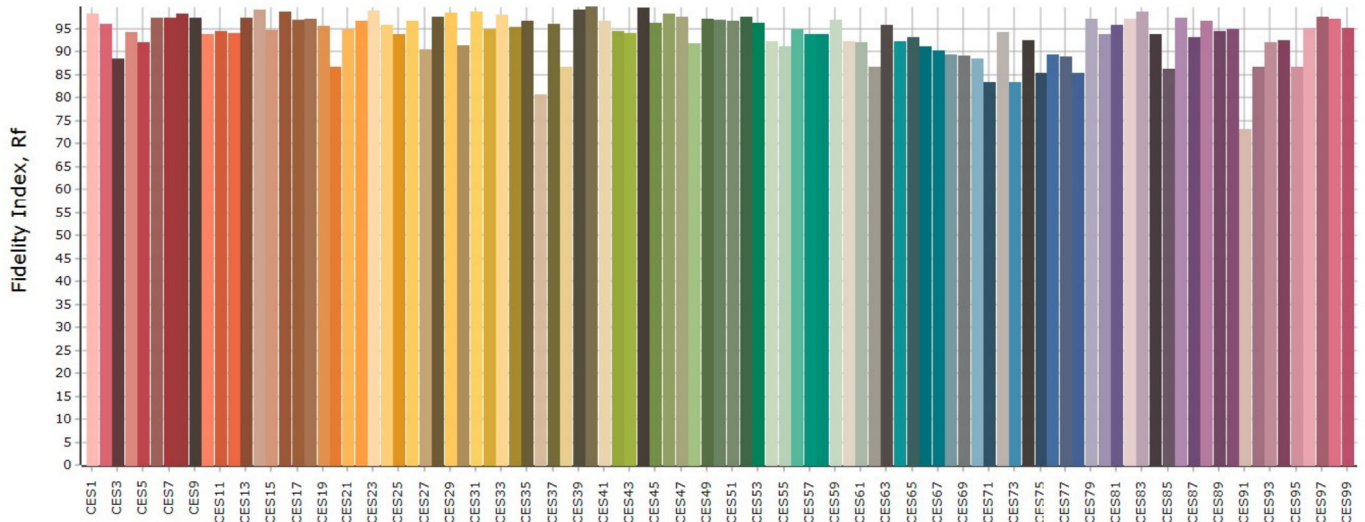
<b>Rf 93,8</b> Fidelity index Rf
<b>Rg 102,3</b> Gamut index Rg

## Resa del colore per Hue



Hue Bin	Rf	Graphic shifts (%)	
		Chroma	Hue
1	94,2	-0,3%	0,6%
2	95,6	0,5%	1,3%
3	94,6	0,5%	1,2%
4	94,8	-0,8%	0,1%
5	93,9	-1,9%	0,3%
6	96,3	1,0%	1,0%
7	95,6	-0,4%	1,8%
8	92,9	-0,1%	3,2%
9	92,0	-0,1%	6,4%
10	89,5	0,8%	5,9%
11	86,4	3,3%	6,9%
12	95,0	2,5%	1,5%
13	94,2	4,1%	-0,1%
14	94,1	2,1%	0,1%
15	86,3	7,7%	-6,3%
16	94,4	1,2%	-1,2%

## Fedeltà del colore per campione



**Risalto M VariWhite +, Fresnel, Zoom max., 5.600K**

Rilevazioni a 4.3 metri

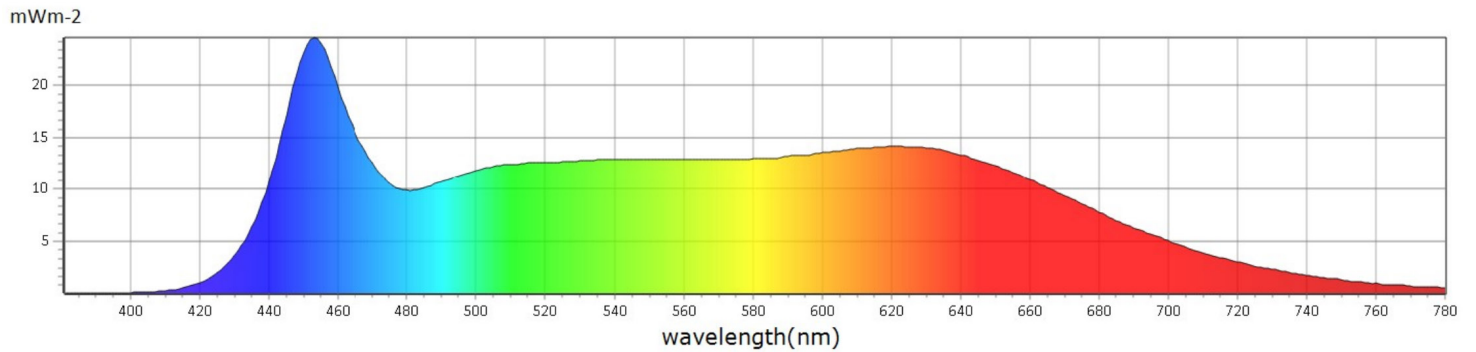
## Generale

● CCT	5273 K
● x	0,3372
● y	0,3328
● LambdaD	639 nm
● LambdaP	452 nm

## Misurazioni

CCT : 5273 K	x10 : 0,3394	delta-x : -0,0006	LambdaD : 639 nm	PPFD : 15,65 $\mu\text{molm}^{-2}\text{s}^{-1}$	S/P : 2,22	R3 : 98,0	R10 : 92,8
LUX : 942,6 lx	y10 : 0,3365	delta-y : -0,0129	LambdaP : 452 nm	PFD : 16,62 $\mu\text{molm}^{-2}\text{s}^{-1}$	IRR : 3,533	R4 : 95,8	R11 : 92,9
I-Time : 8400 us	u'10 : 0,2135	delta-u' : 0,0047	Purity : 1,02%	PFD-B : 3,810 $\mu\text{molm}^{-2}\text{s}^{-1}$	CQS : 94,9	R5 : 94,4	R12 : 82,1
x : 0,3372	v'10 : 0,4762	delta-v' : -0,0067	fc : 87,60	PFD-G : 5,903 $\mu\text{molm}^{-2}\text{s}^{-1}$	CRI : 95,6	R6 : 92,4	R13 : 93,4
y : 0,3328	X : 955,16	Duv : -0,0065	Rf : 93,5	PFD-R : 5,932 $\mu\text{molm}^{-2}\text{s}^{-1}$	TLCI : 98,3	R7 : 97,7	R14 : 98,2
u' : 0,2135	Y : 942,60	MEL : 923,8 lx	Rg : 102,7	PFD-UV : 0,0010 $\mu\text{molm}^{-2}\text{s}^{-1}$	R1 : 93,6	R8 : 97,5	R15 : 92,2
v' : 0,4740	Z : 934,45	LambdaPV : 24,56	GAI : 99,0	PFD-FR : 0,9687 $\mu\text{molm}^{-2}\text{s}^{-1}$	R2 : 95,4	R9 : 89,6	

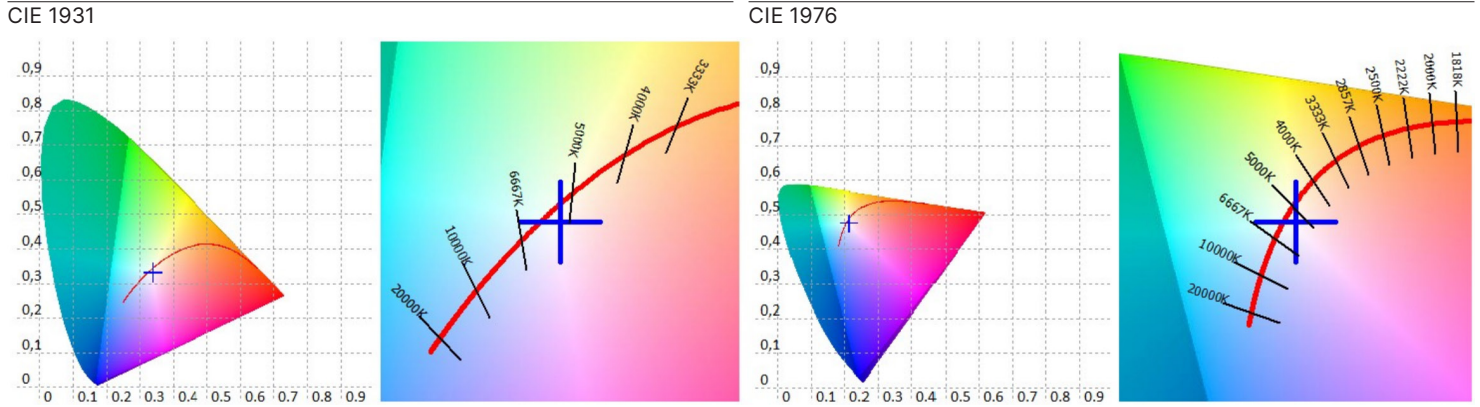
## Spectrum





# Risalto M VariWhite +, Fresnel, Zoom max., 5.600K

Rilevazioni a 4.3 metri



Valori CRI, solo R1-R8 sono usati per calcolare il CRI finale

R1	R2	R3	R4	R5	R6	R7	R8	R9	R10	R11	R12	R13	R14	R15
93,6	95,4	98,0	95,8	94,4	92,4	97,7	97,5	89,6	92,8	92,9	82,1	93,4	98,2	92,2

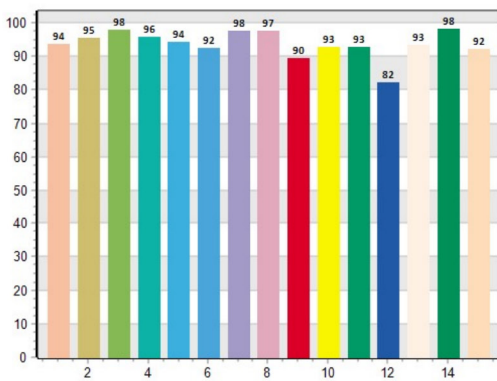
Valori TM30 C, 16 valori raggruppati su un totale di 99 valori C

C1	C2	C3	C4	C5	C6	C7	C8	C9	C10	C11	C12	C13	C14	C15	C16
93,6	94,4	94,2	94,7	93,9	96,0	95,0	91,7	91,5	89,4	86,7	95,0	94,2	94,0	86,4	93,8

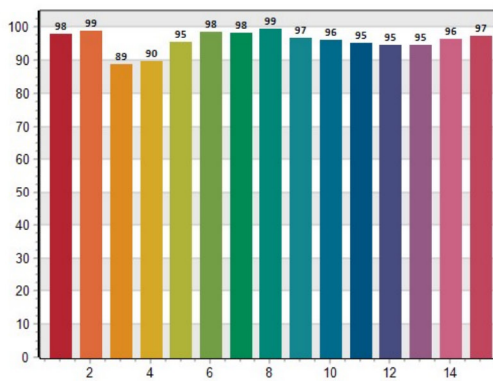
CQS Q values

Q1	Q2	Q3	Q4	Q5	Q6	Q7	Q8	Q9	Q10	Q11	Q12	Q13	Q14	Q15
97,8	99,0	88,9	89,8	95,4	98,5	98,2	99,5	96,8	96,2	95,3	94,7	94,6	96,5	97,3

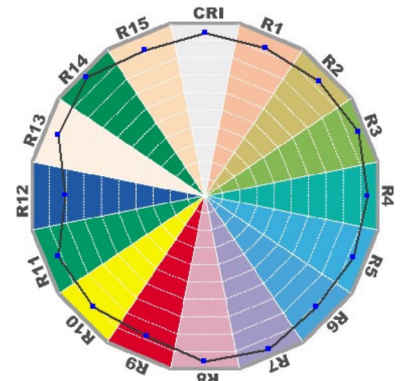
CRI: 95.59



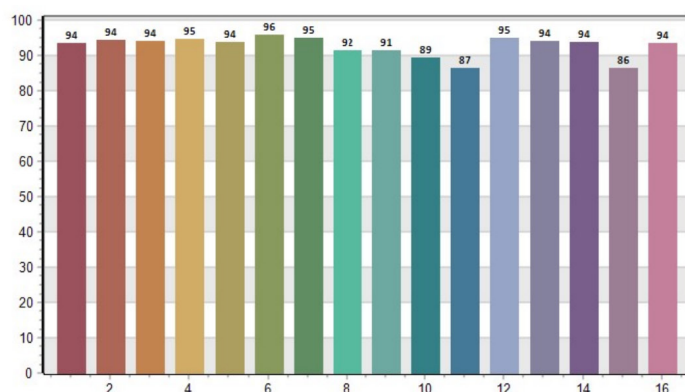
CQS: 94.95



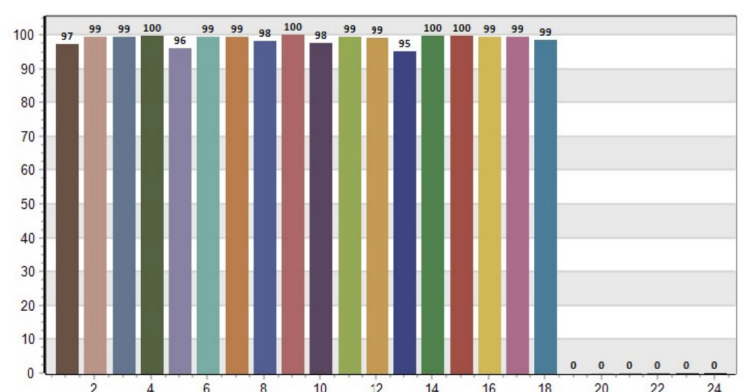
CRI-2



TM30: 93.48



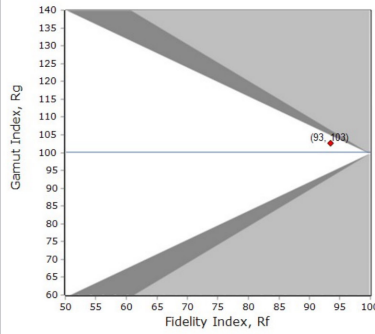
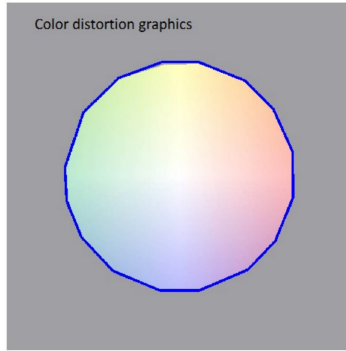
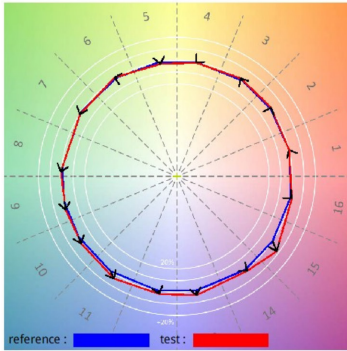
TLCI: 98.28



# Risalto M VariWhite +, Fresnel, Zoom max., 5.600K

Rilevazioni a 4.3 metri

## Resa del colore generale

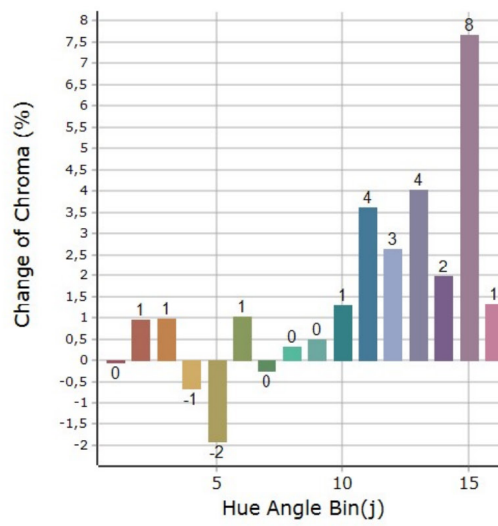
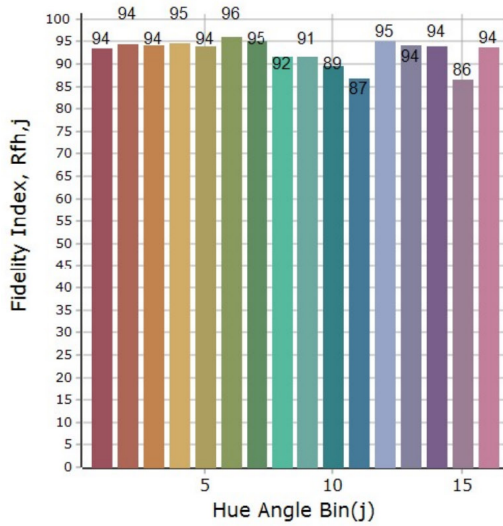


**Rf 93,5**  
Fidelity index Rf

---

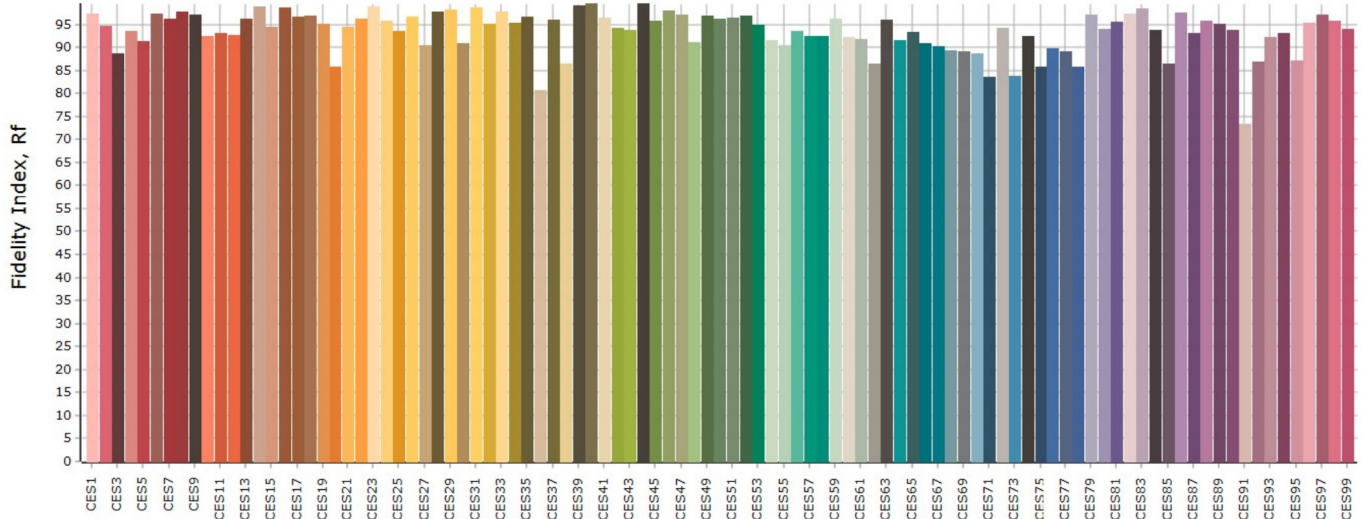
**Rg 102,7**  
Gamut index Rg

## Resa del colore per Hue



		Graphic shifts (%)	
Hue Bin	Rf	Chroma	Hue
1	93,6	0,0%	1,0%
2	94,4	0,9%	0,9%
3	94,2	1,0%	1,6%
4	94,7	-0,7%	-0,1%
5	93,9	-1,9%	0,2%
6	96,0	1,0%	1,2%
7	95,0	-0,2%	2,1%
8	91,7	0,3%	3,7%
9	91,5	0,5%	6,7%
10	89,4	1,3%	5,9%
11	86,7	3,6%	6,5%
12	95,0	2,6%	1,2%
13	94,2	4,0%	-0,1%
14	94,0	2,0%	0,5%
15	86,4	7,7%	-5,8%
16	93,8	1,3%	-0,5%

## Fedeltà del colore per campione



**Risalto M VariWhite +, Fresnel, Zoom min., 6.500K**

Rilevazioni a 4.3 metri

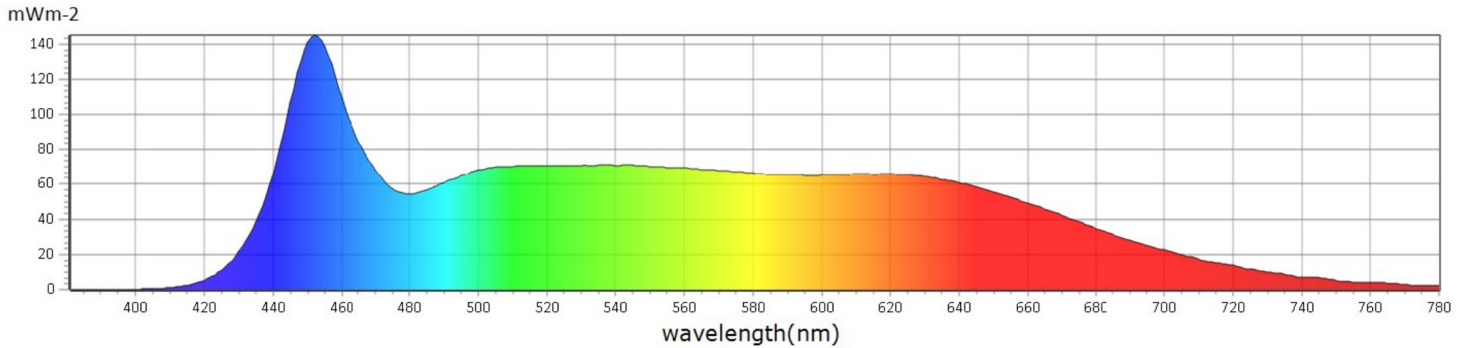
## Generale

● CCT	6197 K
● x	0,3188
● y	0,3255
● LambdaD	484 nm
● LambdaP	451 nm

## Misurazioni

CCT : 6197 K	x10 : 0,3213	delta-x : 0,0002	LambdaD : 484 nm	PPFD : 80,85 $\mu\text{mol}\cdot\text{m}^{-2}\cdot\text{s}^{-1}$	S/P : 2,37	R3 : 97,0	R10 : 97,5
LUX : 4959 lx	y10 : 0,3295	delta-y : -0,0030	LambdaP : 451 nm	PFD : 85,13 $\mu\text{mol}\cdot\text{m}^{-2}\cdot\text{s}^{-1}$	IRR : 18,37	R4 : 98,8	R11 : 96,5
I-Time : 1400 us	u'10 : 0,2036	delta-u' : 0,0013	Purity : 5,53%	PFD-B : 21,95 $\mu\text{mol}\cdot\text{m}^{-2}\cdot\text{s}^{-1}$	CQS : 94,8	R5 : 97,2	R12 : 77,9
x : 0,3188	v'10 : 0,4699	delta-v' : -0,0016	fc : 460,9	PFD-G : 31,69 $\mu\text{mol}\cdot\text{m}^{-2}\cdot\text{s}^{-1}$	CRI : 97,4	R6 : 94,0	R13 : 97,7
y : 0,3255	X : 4857,01	Duv : -0,0017	Rf : 93,2	PFD-R : 27,21 $\mu\text{mol}\cdot\text{m}^{-2}\cdot\text{s}^{-1}$	TLCI : 98,3	R7 : 98,1	R14 : 98,1
u' : 0,2034	Y : 4959,00	MEL : 5233 lx	Rg : 101,0	PFD-UV : 0,0031 $\mu\text{mol}\cdot\text{m}^{-2}\cdot\text{s}^{-1}$	R1 : 97,2	R8 : 98,7	R15 : 96,4
v' : 0,4673	Z : 5420,69	LambdaPV : 145,1	GAI : 99,3	PFD-FR : 4,278 $\mu\text{mol}\cdot\text{m}^{-2}\cdot\text{s}^{-1}$	R2 : 98,4	R9 : 97,0	

## Spectrum

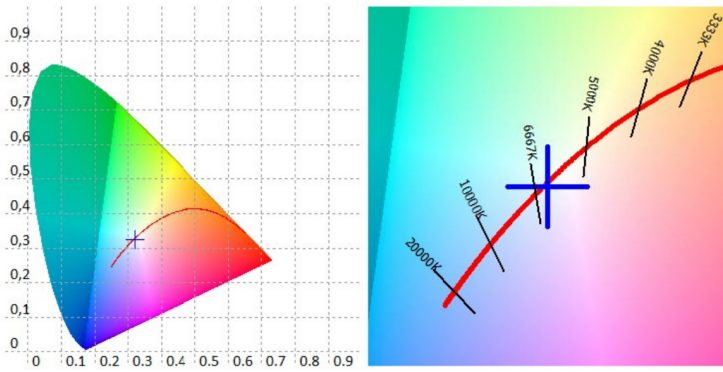




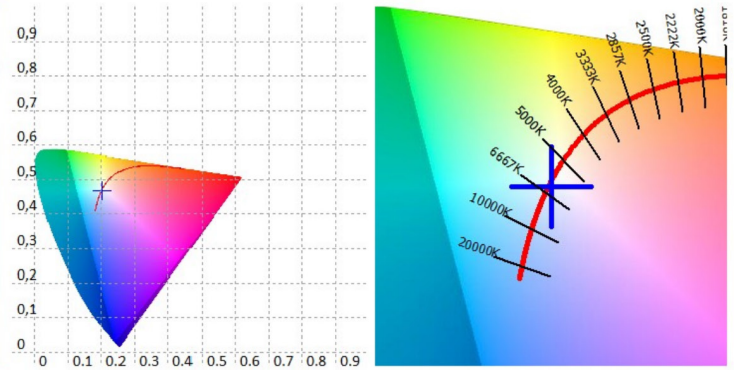
# Risalto M VariWhite +, Fresnel, Zoom min., 6.500K

Rilevazioni a 4.3 metri

CIE 1931



CIE 1976



Valori CRI, solo R1-R8 sono usati per calcolare il CRI finale

R1	R2	R3	R4	R5	R6	R7	R8	R9	R10	R11	R12	R13	R14	R15
97,2	98,4	97,0	98,8	97,2	94,0	98,1	98,7	97,0	97,5	96,5	77,9	97,7	98,1	96,4

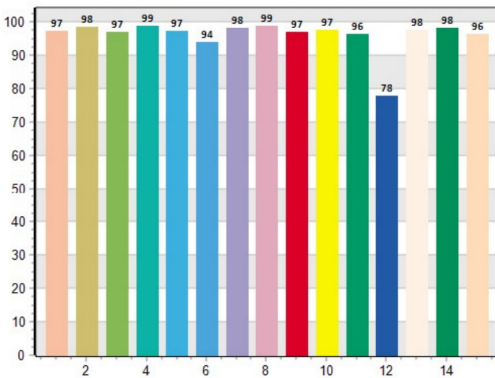
Valori TM30 C, 16 valori raggruppati su un totale di 99 valori C

C1	C2	C3	C4	C5	C6	C7	C8	C9	C10	C11	C12	C13	C14	C15	C16
93,7	96,1	94,7	94,9	91,2	96,4	97,0	92,3	90,7	85,8	85,6	95,0	93,6	94,4	84,5	96,6

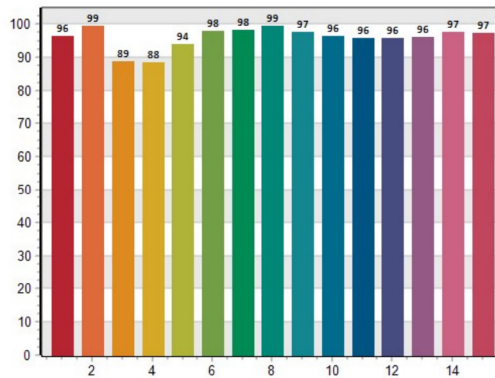
CQS Q values

Q1	Q2	Q3	Q4	Q5	Q6	Q7	Q8	Q9	Q10	Q11	Q12	Q13	Q14	Q15
96,2	99,4	88,8	88,4	93,9	97,7	98,1	99,3	97,4	96,4	95,6	95,7	96,1	97,5	97,2

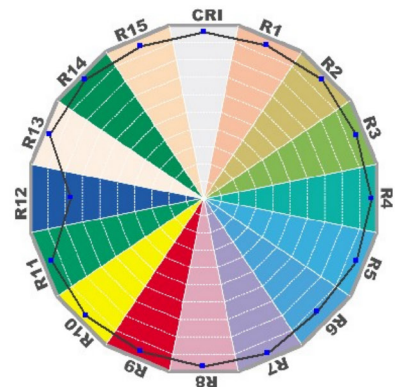
CRI: 97.44



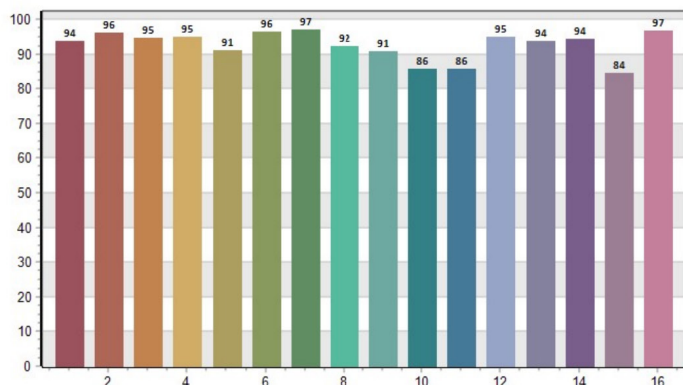
CQS: 94.79



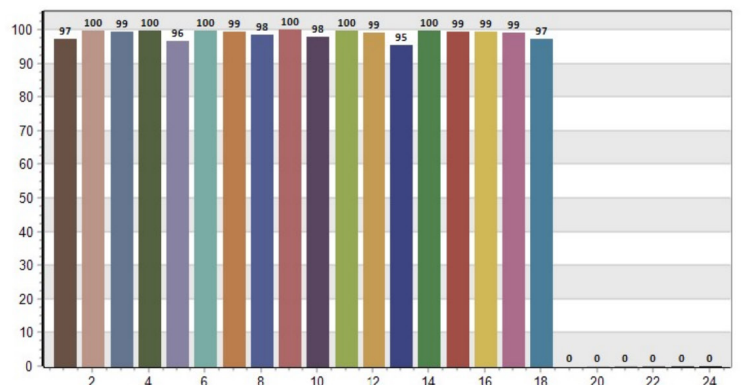
CRI-2



TM30: 93.20



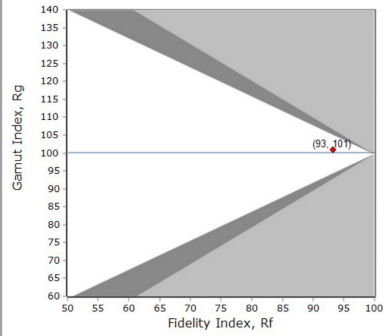
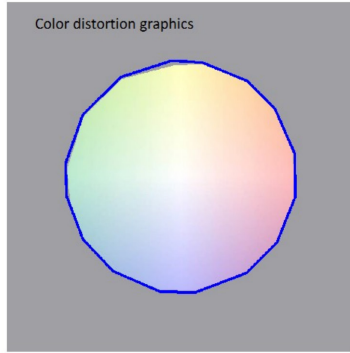
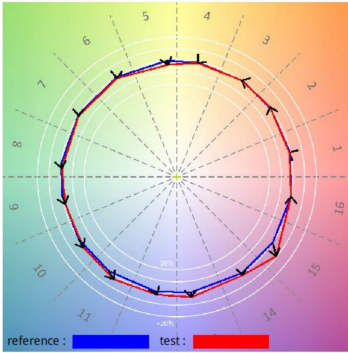
TLCI: 98.27



## Risalto M VariWhite +, Fresnel, Zoom min., 6.500K

Rilevazioni a 4.3 metri

### Resa del colore generale



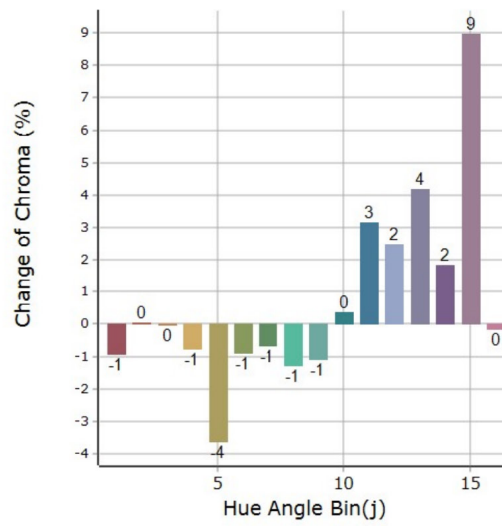
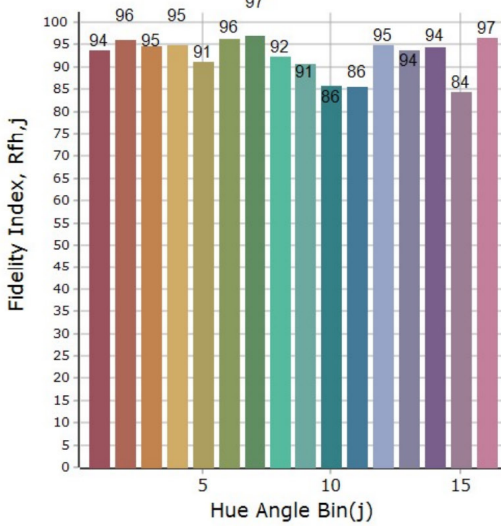
**Rf 93,2**

Fidelity index Rf

**Rg 101,0**

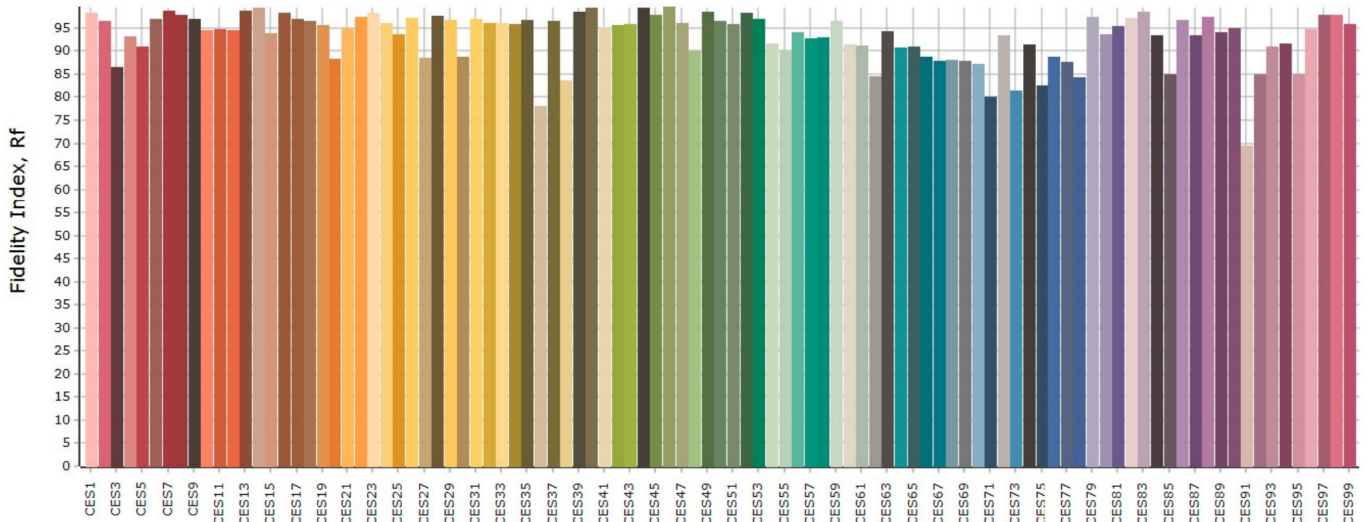
Gamut index Rg

### Resa del colore per Hue



		Graphic shifts (%)	
Hue Bin	Rf	Chroma	Hue
1	93,7	-0,9%	0,5%
2	96,0	0,0%	1,3%
3	94,7	0,0%	1,0%
4	94,9	-0,8%	0,4%
5	91,2	-3,6%	-0,5%
6	96,4	-0,9%	0,7%
7	97,0	-0,7%	1,1%
8	92,3	-1,3%	3,6%
9	90,7	-1,1%	7,2%
10	85,8	0,4%	8,1%
11	85,6	3,2%	7,6%
12	95,0	2,5%	1,6%
13	93,6	4,2%	-0,4%
14	94,4	1,8%	-0,7%
15	84,5	9,0%	-8,2%
16	96,6	-0,2%	0,0%

### Fedeltà del colore per campione



**Risalto M VariWhite +, Fresnel, Zoom max., 6.500K**

Rilevazioni a 4.3 metri

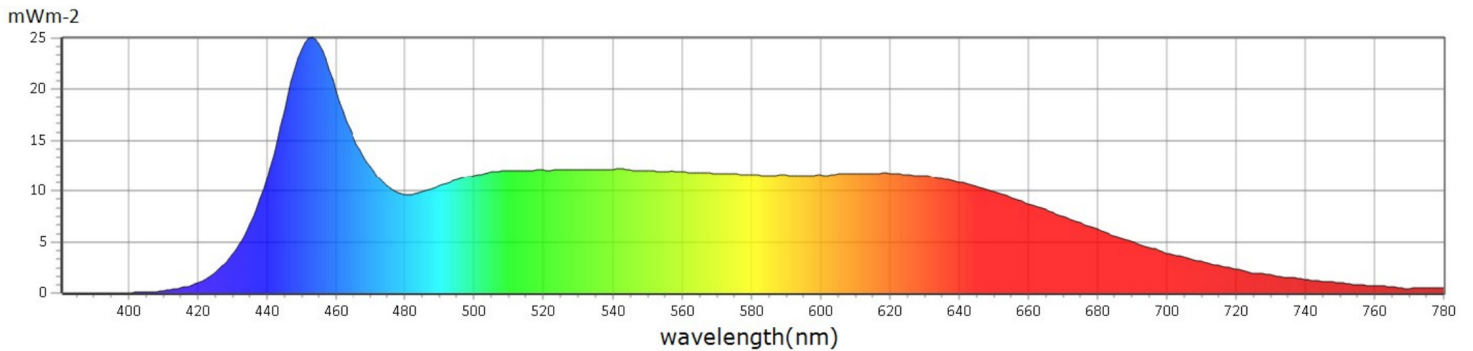
## Generale

● CCT	6112 K
● x	0,3205
● y	0,3232
● LambdaD	481 nm
● LambdaP	452 nm

## Misurazioni

CCT : 6112 K	x10 : 0,3228	delta-x : 0,0005	LambdaD : 481 nm	PPFD : 14,15 $\mu\text{molm}^{-2}\text{s}^{-1}$	S/P : 2,37	R3 : 97,5	R10 : 96,0
LUX : 860,1 lx	y10 : 0,3275	delta-y : -0,0067	LambdaP : 452 nm	PFD : 14,91 $\mu\text{molm}^{-2}\text{s}^{-1}$	IRR : 3,213	R4 : 97,6	R11 : 95,2
I-Time : 8400 us	u'10 : 0,2055	delta-u' : 0,0030	Purity : 5,26%	PFD-B : 3,843 $\mu\text{molm}^{-2}\text{s}^{-1}$	CQS : 94,7	R5 : 96,0	R12 : 78,7
x : 0,3205	v'10 : 0,4690	delta-v' : -0,0035	fc : 79,94	PFD-G : 5,464 $\mu\text{molm}^{-2}\text{s}^{-1}$	CRI : 96,7	R6 : 93,4	R13 : 95,5
y : 0,3232	X : 853,02	Duv : -0,0038	Rf : 93,0	PFD-R : 4,843 $\mu\text{molm}^{-2}\text{s}^{-1}$	TLCI : 98,2	R7 : 98,0	R14 : 98,1
u' : 0,2056	Y : 860,11	MEL : 908,8 lx	Rg : 101,5	PFD-UV : 0,0003 $\mu\text{molm}^{-2}\text{s}^{-1}$	R1 : 95,4	R8 : 98,5	R15 : 94,3
v' : 0,4664	Z : 948,04	LambdaPV : 25,07	GAI : 100,6	PFD-FR : 0,7591 $\mu\text{molm}^{-2}\text{s}^{-1}$	R2 : 97,1	R9 : 93,7	

## Spectrum

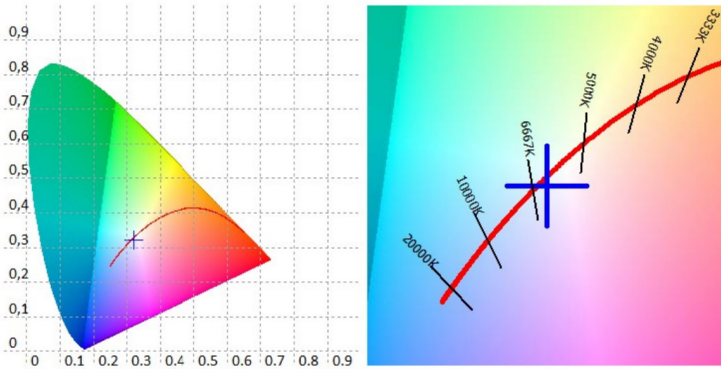




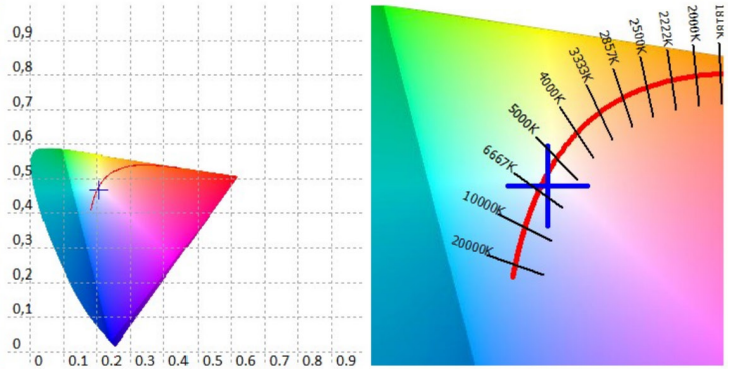
# Risalto M VariWhite +, Fresnel, Zoom max., 6.500K

Rilevazioni a 4.3 metri

CIE 1931



CIE 1976



Valori CRI, solo R1-R8 sono usati per calcolare il CRI finale

R1	R2	R3	R4	R5	R6	R7	R8	R9	R10	R11	R12	R13	R14	R15
95,4	97,1	97,5	97,6	96,0	93,4	98,0	98,5	93,7	96,0	95,2	78,7	95,5	98,1	94,3

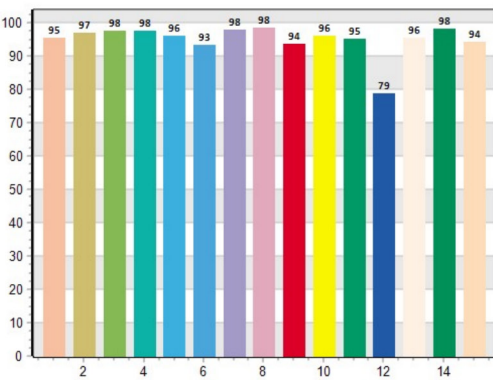
Valori TM30 C, 16 valori raggruppati su un totale di 99 valori C

C1	C2	C3	C4	C5	C6	C7	C8	C9	C10	C11	C12	C13	C14	C15	C16
93,3	95,1	94,5	94,9	91,0	96,1	96,5	91,2	90,2	87,3	85,0	95,0	93,7	94,3	84,7	95,9

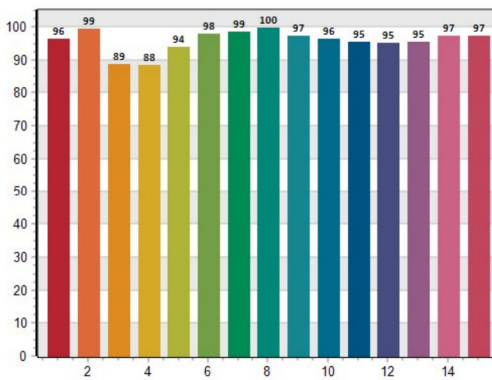
CQS Q values

Q1	Q2	Q3	Q4	Q5	Q6	Q7	Q8	Q9	Q10	Q11	Q12	Q13	Q14	Q15
96,4	99,4	88,8	88,3	93,9	98,0	98,5	99,7	97,1	96,4	95,5	95,2	95,3	97,2	97,1

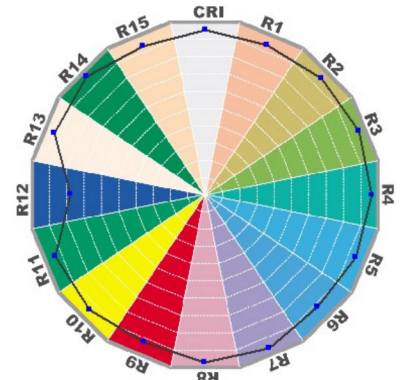
CRI: 96.67



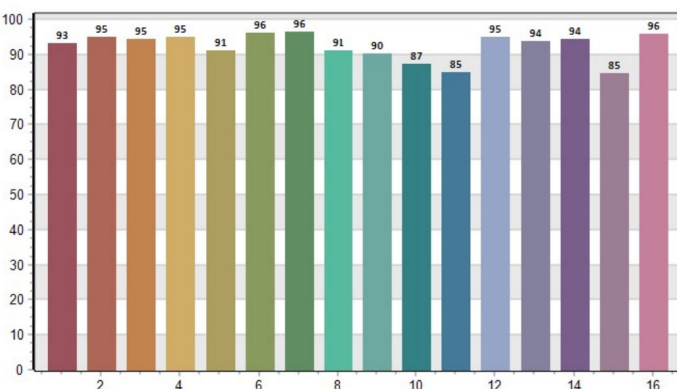
CQS: 94.70



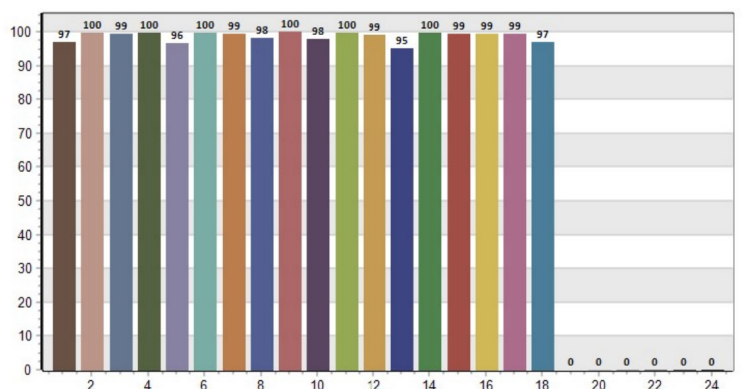
CRI-2



TM30: 92.98



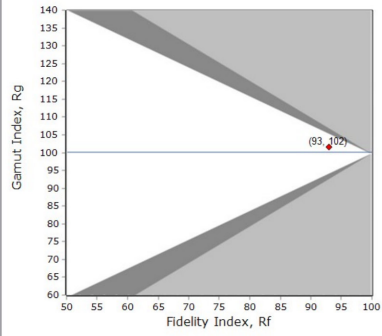
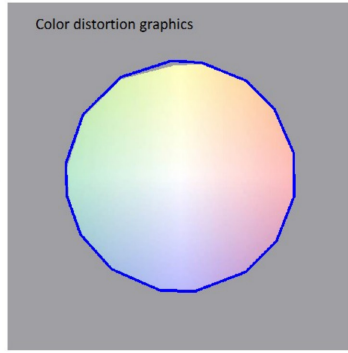
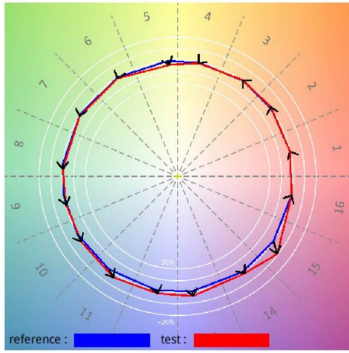
TLCI: 98.23



# Risalto M VariWhite +, Fresnel, Zoom max., 6.500K

Rilevazioni a 4.3 metri

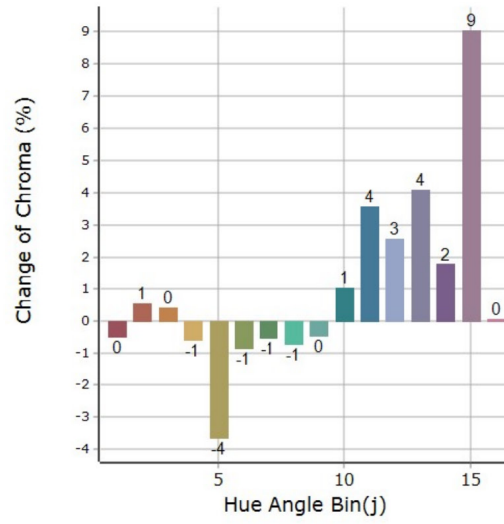
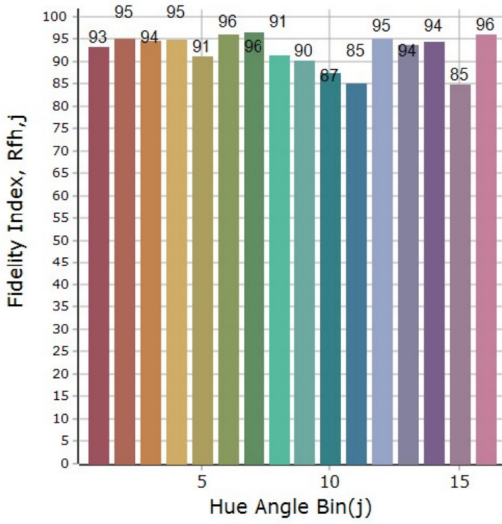
## Resa del colore generale



**Rf 93,0**  
Fidelity index Rf

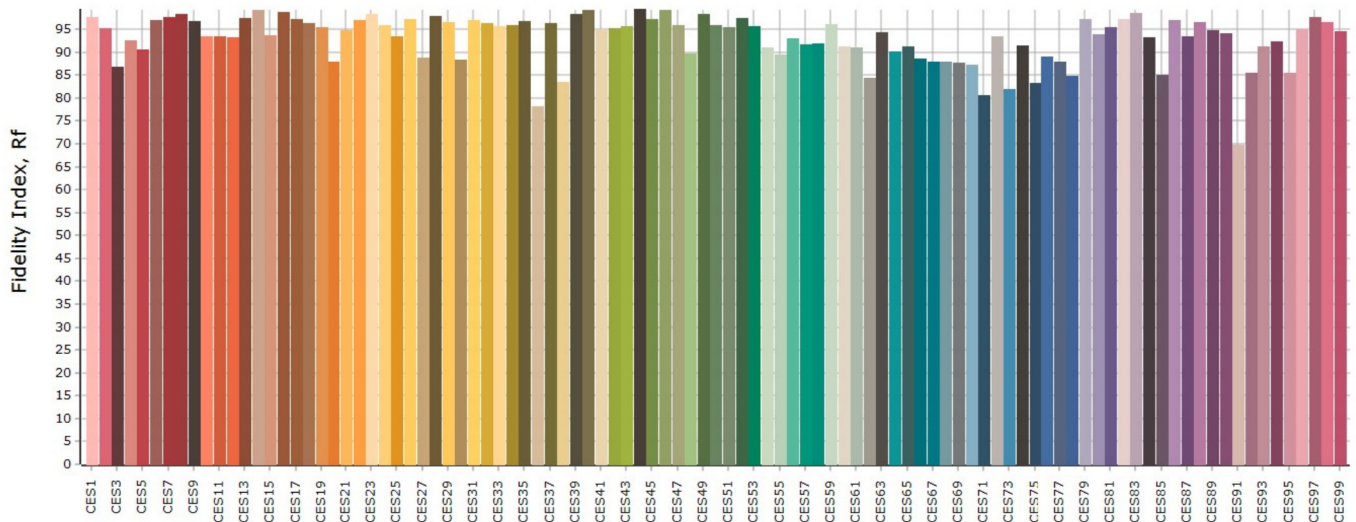
**Rg 101,6**  
Gamut index Rg

## Resa del colore per Hue



Hue Bin	Rf	Graphic shifts (%)	
		Chroma	Hue
1	93,3	-0,5%	0,9%
2	95,1	0,5%	1,5%
3	94,5	0,4%	0,8%
4	94,9	-0,6%	0,3%
5	91,1	-3,6%	-0,6%
6	96,1	-0,9%	1,0%
7	96,4	-0,5%	1,4%
8	91,3	-0,7%	4,2%
9	90,2	-0,5%	7,5%
10	87,4	1,0%	7,2%
11	85,0	3,6%	7,6%
12	94,9	2,6%	1,4%
13	93,7	4,1%	-0,3%
14	94,3	1,8%	-0,1%
15	84,8	9,0%	-7,3%
16	95,9	0,1%	0,6%

## Fedeltà del colore per campione





● Coemar Lighting S.r.l.

Via Carpenedolo, 90  
46043, Castiglione delle Stiviere (MN) – Italy

P. +39 0376 1514412

M1. info@coemar.com

M2. service@coemar.com

W. coemar.com

P.iva – C.f. 02415330204

